



Solar PV Isolator Switch DC1000V 1500V 160A 250A 400A 630A 800A 1250A Disconnecter Switch

Our Product Introduction

Basic Information

- Place of Origin: China
- Brand Name: Golden Electric /OEM
- Certification: ISO 9001, ISO 9000, ISO 14001, ISO 14000, ISO 20000, OHSAS/ OHSMS 18001, IATF16949
- Minimum Order Quantity: 1
- Packaging Details: Carton/Pallet
- Delivery Time: Peak Season Lead Time: more than 12 months Off Season Lead Time: within 15 workdays
- Payment Terms: LC, T/T, PayPal, Western Union
- Supply Ability: 5000/Month



Product Specification

- Structure Of Operating: Manual
- Brand: Golden Electric /OEM
- Product Name: DC Isolator Switch
- Rated Voltage: DC 1500V / 1000V
- Rated Current: 100A-1600A
- Contact: Copper
- Name: Solar DC Disconnect Switch
- Pollution Degree: 3
- Protection Grade: IP20
- Working Humidity: 50% - 90%
- Working Temperature: -5 To 40°C
- Rated Insulation Voltage U_i : DC1500V
- Transport Package: Export Package
- Specification: 2P/4P
- Trademark: Golden Or Natural, Or Customer Brand



More Images



for more products please visit us on chinagoldene.com

Product Description

Product Description

GNH19 series products are DC load disconnectors. They can ensure the disconnection and connection of DC circuits under load, as well as safety isolation. They are mainly used in the field of photovoltaic systems. The rated voltage can reach 1500VDC and the maximum current can reach 630A.

- * Various current shells optional
- * Adopt flame retardant V0 grade material
- * Adopt T2 grade copper material
- * Supports two installation methods: installation outside the cabinet and installation inside the cabinet
- * With observation window, obvious disconnection mark, enhance the safety of use
- * Contact embossing design, increase the contact surface to ensure the performance
- * Handle with lock function

Product Performance



Rated operational voltage U_e : DC1000V/DC1500V
 Rated operational current I_e : 100A-1600A
 Rated insulation voltage U_i : DC1500V
 Poles: 2P (with connect bar), 4P
 Connect Material: Red Copper
 Pollution degree: 3
 Storage temperature: -25 to 55°C
 Protection grade: IP20
 Installation altitude: 2 000 m
 Working Temperature: -5 to 40°C
 Storage temperature: -25 to 55°C
 Working humidity: 50% - 90%

Product Parameters

GNH19 100-400A

Type	GNH19-100/4	GNH19-125/4	GNH19-160/4	GNH19-200/4	GNH19-250/4	GNH19-315/4	GNH19-400/4
Rated operational current I_e	100A	125A	160A	200A	250A	315A	400A
Rated operational voltage U_e	DC1000V/DC1500V						
Rated insulation voltage U_i	1500V						
Installation category	IV						
Utilization category	DC-21B						
Dielectric Strength	3820V						
Rated impulse withstand voltage U_{imp}	12kV						
Rated limited short time withstand current (I_{cw}/I_{cs})	6kA					8kA	
Rated short time making capacity (I_{cm})	10kA					13.6kA	
Mechanical endurance times	1700	1400					800
Electrical endurance times (DC1500V)	300	200					
Operating Torque	10N.m					21N.m	
Power Lose W	15					20	

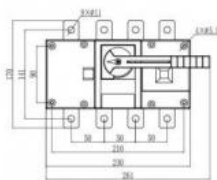
GNH19 500-1600A

Type	GNH19-500/4	GNH19-630/4	GNH19-800/4	GNH19-1000/4	GNH19-1250/4	GNH19-1600/4
Rated operational current Ie	500A	630A	800A	1000A	1250A	1600A
Rated operational voltage Ue	DC1000V/DC1500V					
Rated insulation voltage Ui	1500V					
Installation category	IV					
Utilization category	DC-21B					
Dielectric Strength	3820V					
Rated impulse withstand voltage Uimp	12kV					
Rated limited short time withstand current (Icw/Ics)	10kA					
Rated short time making capacity(Icm)	13.6kA		10kA			
Mechanical endurance times	800		500			
Electrical endurance times(DC1500V)	200		100			
Operating Torque	21N.m		50N.m			
Power Loss W	20	25	70	110	165	265

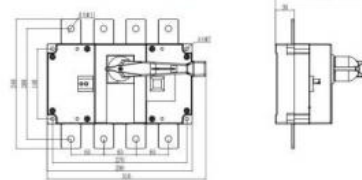
Product Details

Dimension

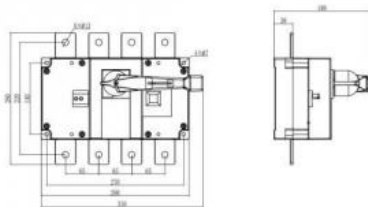
GNH19-100~250/4



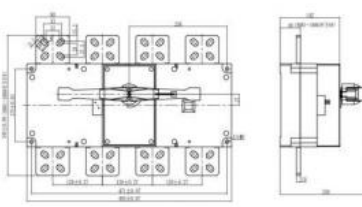
GNH19-315~400/4



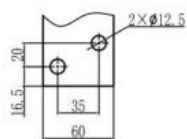
GNH19-500~630/4



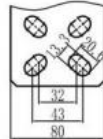
GNH19-800~1600/4



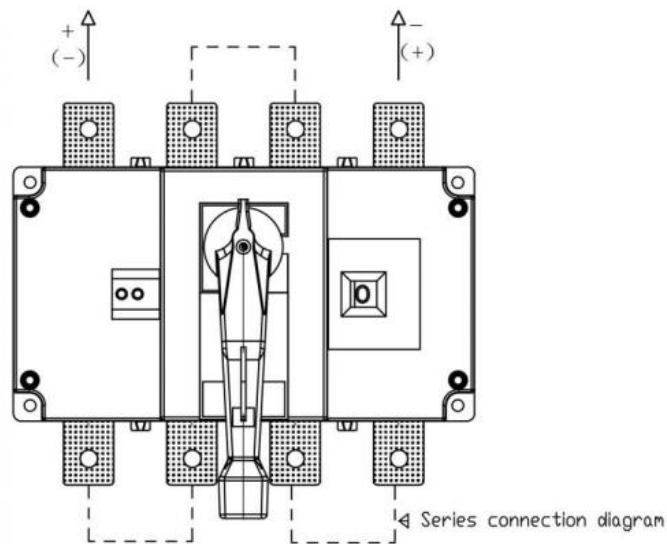
800A-1000A connection terminal



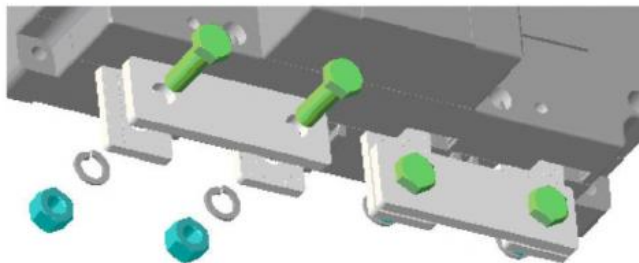
1250A-1600A connection terminal



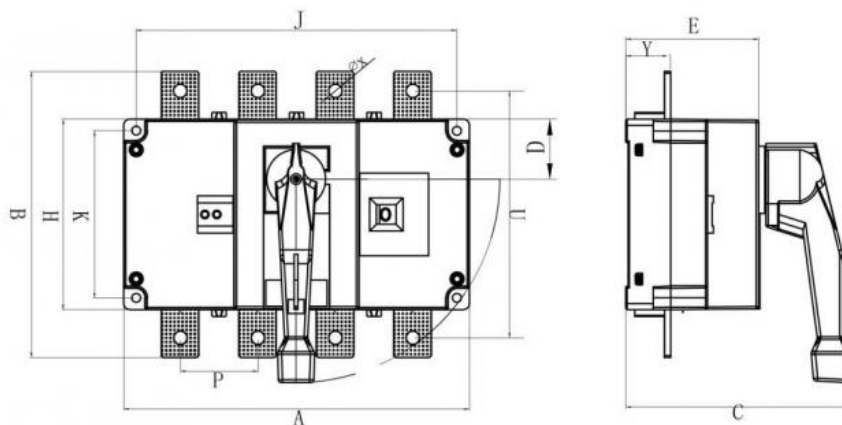
Connection



Used in series connecting copper now



Assemble Dimension



Item	Dimensions										Assemble Dimension	
	A	B	C	D	E	H	Y	U	P	φX	J	K
250A/4	232	170	151	32	89	110	26	141	50	10.5	212	90
400A/4	290	240	200	50	111	160	38	208	65	11	269	140.5
1250A/4	493	338	218	73	144	200	48		120	13.5	471	140



FAQ

1) Q:How can i trust your company?

A:Golden electric is The top 10 manufacture in China -more than 350 Agents in local market and more than 100 foreign clients make OEM,ODM order from us,Golden electric is a big company, we have cooperation with LS, EKF the world-class companies. Our company over 100 employees, products pass CE,IEC,TUV,SAA, RCM, ROHS certificates.

2) Q:Your products?

A: Golden electric is factory for Isolator Switch,Automatic transfer switch,Surge protector device,distribution box Enclosure, inverter, DC fuse etc. Providing customers very competitive sources, and can be your sourcing agent in China. Goods are following international standards, IE, CE, ISO9001 ,SGS etc.

3) Q: After Sales Service?

A: We will provide the best After-sales Service

4) Q: What's the payment term?

A: Normally 100% T/T in advanced payment. If big order then about 50% advanced payment, balance before shipment.PAYPAL,WESTERN UNION,CASH for small order.

5) Q: Your address ?

A: Locates in Guangzhou province, China,welcome to visit us

6) Q:What's your contact information ?

Send your Inquiry Details in the Below, Click "send" Now!! We will do our best to give you a perfect service.



Guangzhou Golden Electric Co., Ltd.



008618998498109



eva@china-golden.com.cn



chinagoldene.com

Building 4, Self-edited Building, No. 728, Kaichuang Avenue, Yunpu Industrial Zone, Huangpu District, Guangzhou city,Guangdong province,China