



## Protection Structure Electrical Distribution Box Dustproof With Steel Plate

Our Product Introduction

### Basic Information

- Place of Origin: China
- Brand Name: Golden Electric /OEM
- Certification: ISO 9001, ISO 9000, ISO 14001, ISO 14000, ISO 20000, OHSAS/ OHSMS 18001, IATF16949
- Minimum Order Quantity: 1
- Packaging Details: Carton/Pallet
- Delivery Time: Peak Season Lead Time: more than 12 months  
Off Season Lead Time: within 15 workdays
- Payment Terms: LC, T/T, PayPal, Western Union
- Supply Ability: 5000/Month



### Product Specification

- Material And Color: Cold Roll Steel To Paint In Ral7032
- Standard Configuration: Enclosure And Door, Mounting Plate, Bar Lock
- Transport Package: Standard Export Carton
- Specification: Different Sizes And Specifications
- Trademark: Golden Electric Or Customize
- Origin: China
- HS Code: 8537209000
- Supply Ability: 5000/Month
- Type: Distribution Metering Box
- Structure: Protection
- Certification: ISO9001:2000
- Operation Voltage: Low Voltage
- Shell Material: Steel Plate
- Surface Treatment: Textured Epoxy Polyester Powder Coating



### More Images



for more products please visit us on [chinagoldene.com](http://chinagoldene.com)

## Product Description

### About us:

GUANGZHOU GOLDEN ELECTRIC Co., Ltd. is professional supplier of Electrical products.

We are Specialized in producing and supplying portable distribution box, waterproof plug, socket, wall switch, waterproof plastic ,Aluminum box ,Changeover Switch and disconnecting switch. all products comply with IEC, A S/NZS standard. passed CE, IP66, ROHS certificates.

Advanced process technologies, standard production processes and precise testing equipment, all ensure the products we supply can satisfy with customers' need. Our Cooperative factory has 15 injection molding machines, 16 CNC and 13 automatic lathes and 12 testing equipment. at present we have exported to many countries and have serve these customers with professional electrical solution.

Welcome to visit our factory.Thank

### Product Description



Golden Electric



### Standard configuration:

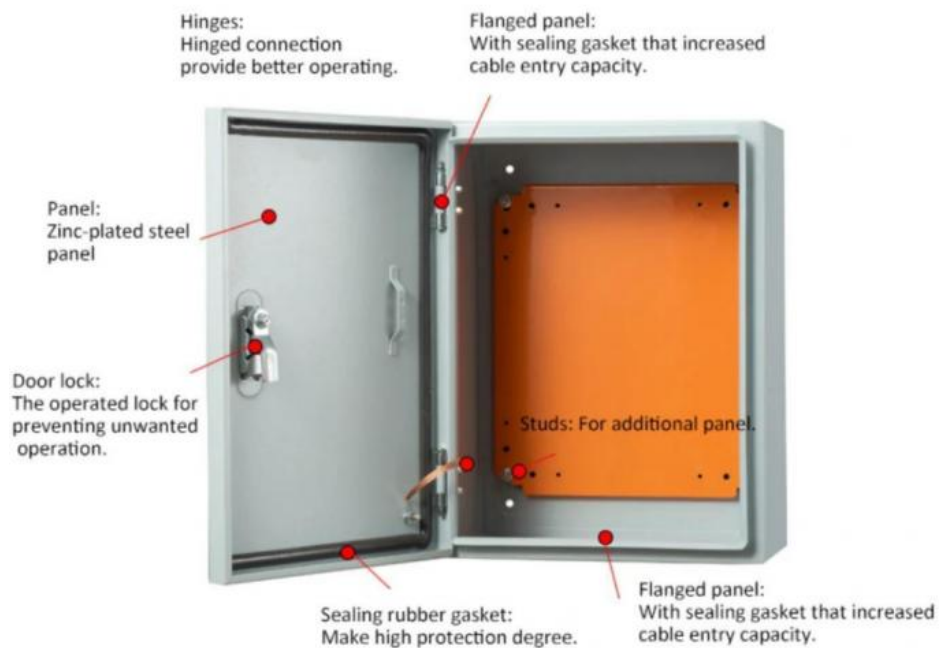
- \*Enclosure and door
- \*Mounting plate
- \*Bar lock
- \*Polyurethane door seal
- \*Cable gland plate and gasket
- \*Electric supplies metal box steel wall mounting enclosure box ip66 electrical panel box sizes

### Surface treatmane:

Textured epoxy polyester powder coating, Electric supplies metal box steel wall mounting enclosure box ip66 electrical panel box sizes.

### Material and color:

Body and front door:cold roll steel to paint in RAL7032, Electric supplies metal box steel wall mounting enclosure box ip66 electrical panel box sizes.



#### Technological characteristics

Fully automatic sealing strip casting machine  
One-shot molding, self-skinning, and traditional adhesive  
The sealing strip is rainproof, fireproof,  
High temperature resistance, high strength, beautiful appearance and other advantages.



Removable hinge  
The door panel can be interchanged left and right, and compared with traditional welded hinges, it also has beautiful appearance and high strength. It will not desolder, break and so on

CNC automatic production line processing  
The special hemming process improves the compressive strength of the product and reduces the welding process.  
Greatly improved production efficiency.

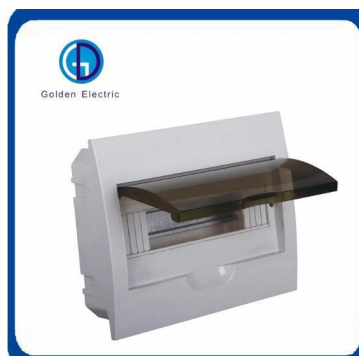


Reference	Height(mm)	Width(mm)	Depth(mm)
GME-2020/150	200	200	150
GME-3025/150	300	250	150
GME-3025/200	300	250	200
GME-33/150	300	300	150
GME-33/200	300	300	200

GME-34/200	300	400	200
GME-43/150	400	300	150
GME-43/200	400	300	200
GME-44/200	400	400	200
GME-46/250	400	600	250
GME-46/300	400	600	300
GME-54/150	500	400	150
GME-54/200	500	400	200
GME-54/250	500	400	250
GME-55/250	500	500	250
GME-64/150	600	400	150
GME-64/200	600	400	200
GME-64/250	600	400	250
GME-65/150	600	500	150
GME-65/200	600	500	200
GME-65/250	600	500	250
GME-66/250	600	600	250
GME-66/300	600	600	300
GME-68/300	600	800	300
GME-75/200	700	500	200
GME-75/250	700	500	250
GME-86/200	800	600	200
GME-86/250	800	600	250
GME-86/300	800	600	300
GME-86/400	800	600	400
GME-88/200	800	800	200
GME-88/300	800	800	300
GME-810/300	800	1000	300
GME-106/250	1000	600	250
GME-106/300	1000	600	300
GME-108/250	1000	800	250
GME-108/300	1000	800	300
GME-108/400	1000	800	400
GME-1010/300	1000	1000	300
GME-1012/300	1000	1200	300
GME-128/300	1200	800	300
GME-128/400	1200	800	400
GME-1210/300	1200	1000	300

**Can be made according to customer requirements.**

#### Hot Selling Distribution Box



Q1: Are you a factory or trading company

A1: We are a factory, we can guarantee our price is first-hand, very cheap and competitive.

Q2: How does your factory do regarding quality control?

A2: All the products will be 100% checked before the shipment

Q3: When can I get the price?

A3: Usually we quote within 24 hours after we get your inquiry.

Q4: How could I get a sample?

A4: if you can not buy our product in your local area, we will ship a sample to you. You will be charged a sample price plus all related shipping costs. Express delivery charge depends on the quantity of the samples.

Q5: What is the price of shipping?

A5: Depending upon the port of delivery, prices vary.

**Any more query please contact with us, thank you!**



**Guangzhou Golden Electric Co., Ltd.**



008618998498109



eva@china-golden.com.cn



chinagoldene.com

Building 4, Self-edited Building, No. 728, Kaichuang Avenue, Yunpu Industrial Zone, Huangpu District,  
Guangzhou city, Guangdong province, China