



One Base Two Four Base Surface Mounted Junction Box with Copper Galvanized Shell Material

Our Product Introduction

Basic Information

- Place of Origin: China
- Brand Name: Golden Electric /OEM
- Certification: ISO 9001, ISO 9000, ISO 14001, ISO 14000, ISO 20000, OHSAS/ OHSMS 18001, IATF16949
- Minimum Order Quantity: 1
- Packaging Details: Carton/Pallet
- Delivery Time: Peak Season Lead Time: more than 12 months Off Season Lead Time: within 15 workdays
- Payment Terms: LC, T/T, PayPal, Western Union
- Supply Ability: 5000/Month

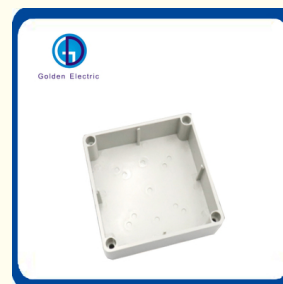


Product Specification

- Feature: Safe, Durable, Timesaving
- Color: Orange
- Rated Voltage: 250V
- Protection: IP66
- Earth Contact Position: 6h, 9h
- Hours: 9h
- Core Diameter: PC
- Temperature Range: -25- +80
- Installation: Straight Plug
- Customized: Yes
- Connector Material: Brass
- Wiring: Wireless
- Operating Temperature: -20-90
- Rated Frequency: 140
- Shell Material: Copper Galvanized



More Images



for more products please visit us on chinagoldene.com

Product Description

Australian Standard Industrial Waterproof Product IP66

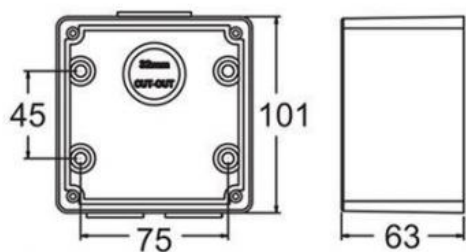


- 1.Rain and dust proof
- 2.Compression and fall resistance
- 3.anti-corrosion
- 4.Good matrial
- 5.High temperature flame retardant
- 6.Factory direct sale

Product Parameters



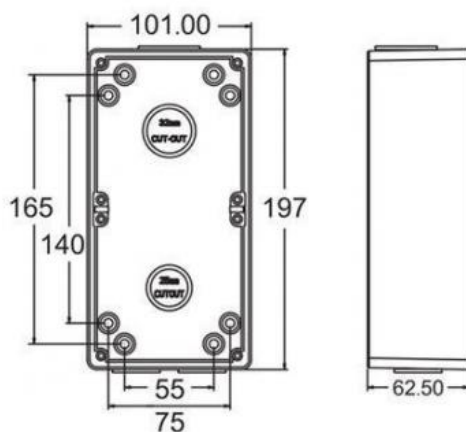
Model:56E1



Unit: (mm)



Model:56E2

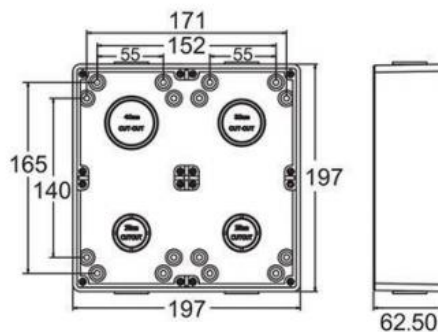


Unit:

(mm)



Model:56E4



Unit: (mm)

Product Details



High quality copper parts

Using high quality copper material, corrosion resistance is strong, to ensure the use of electricity safety and lasting, with excellent electrical conductivity, thermal conductivity

Gasket seal

Each joint adopts high strength sealing rubber, corrosion resistance, waterproof guarantee, improve service life



PC material

The whole body is made of PC plastic material, hard shell, wear-resistant and pressure-resistant, stable and durable, longer service life

HOT PRODUCT



Packaging & Shipping

Packing: Standard export carton packing

Shipping: 1. By Air or by Sea for batch goods, Airport/ Port receiving;
2. Customers specifying freight forwarders or negotiable shipping methods!



Company Profile

- Golden Electric Co.,Ltd ,was foundad in 2017, we are professional for make AC and DC electric items such as [isolator switch](#) , [fuse](#) , [breaker](#) , [distribution box](#) , [PV combiner box](#) , [surge protector](#) , [Industrial plug and socket](#), [Solar product](#) and so on.

- Golden has been granted ISO9001 management system certifications. The comprehensive product line has more than 1000 models which have been approved by TUV,CE,CQC,SGS,ROHS,SASO. The productsells well to UK, Spain, Portugal, Singapore, Turkey, Russia, Korea, South Africa... more than 60 countries and regions.

- Golden is always striving hard to provide the best services and competitive price to all customers.

FAQ

Q1. Can I have a sample order?

A: Yes, we welcome sample order to test and check quality. Mixed samples are acceptable.

Q2. What about the lead time?

A:Sample needs 1 work-days, mass production time needs 1-2 weeks for order quantity more than 100pcs.

Q3. Do you have any MOQ limit for tried-order?

A: Low MOQ, 1pc for sample checking is available

Q4. How do you ship the goods and how long does it take to arrive?

A: We usually ship by DHL, UPS, FedEx or TNT. It usually takes 3-5 working-days to arrive. Airline and sea shipping also optional.

Q5. Is it OK to print my logo on product?

A: Yes. Please inform us formally before our production and confirm the design firstly based on our sample.

Q6: Do you offer guarantee for the products?

A: Yes, 2 years

How to contact us

Send your Inquiry Details in the Below, please Click "[send](#)" Now!

Good price and sample are waiting for you.



Guangzhou Golden Electric Co., Ltd.



008618998498109



eva@china-golden.com.cn



chinagoldene.com

Building 4, Self-edited Building, No. 728, Kaichuang Avenue, Yunpu Industrial Zone, Huangpu District,
Guangzhou city,Guangdong province,China