



Wall-Mount PVC Electronic Enclosure for Impact and Corrosion Resistance in Small Size

Our Product Introduction

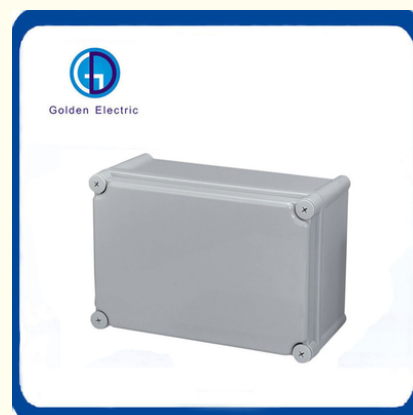
Basic Information

- Place of Origin: China
- Brand Name: Golden Electric /OEM
- Certification: ISO 9001, ISO 9000, ISO 14001, ISO 14000, ISO 20000, OHSAS/ OHSMS 18001, IATF16949
- Model Number: Plastic Waterproof Junction Box
- Minimum Order Quantity: 1
- Packaging Details: Carton/Pallet
- Delivery Time: Peak Season Lead Time: more than 12 months Off Season Lead Time: within 15 workdays
- Payment Terms: LC, T/T, PayPal, Western Union
- Supply Ability: 5000/Month

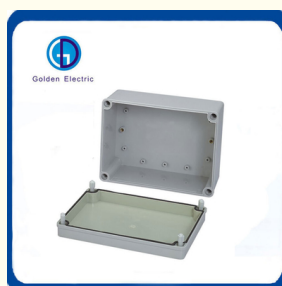
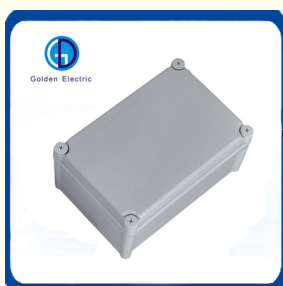


Product Specification

- Model NO.: GD-KT
- Function: Waterproof, Dustproof, Rustproof
- Keyword: Cable Junction Box
- Application: Industrial Electric
- Installation Method: Wall-Mount
- Size: 175mm*175mm*100mm
- Transport Package: Standard Export Carton
- Specification: Many Different Size
- Trademark: Golden Or Natural, Or Customer Brand
- Origin: China
- HS Code: 8538900000
- Supply Ability: 20000PCS/Month
- Type: Waterproof Junction Box
- Material: ABS, PC
- IP Rating: IP65



More Images



for more products please visit us on chinagoldene.com

Product Description

Product Description

The plastic switch box and waterproof box are made of high quality PC or ABS, a unique tool that is used for injection molding produces a new type haigh security product to protect them from the severe environment. The box body may be different and has various specifications, it cover can be non-transparent or transparent, can be hinge type or bolted. This switch box are specially used on button, terminal boards, electronic device control equipment, is featured with waterproof, dustproof and corrosion proof , can be used instead of glass fiber seal box.

Product Features



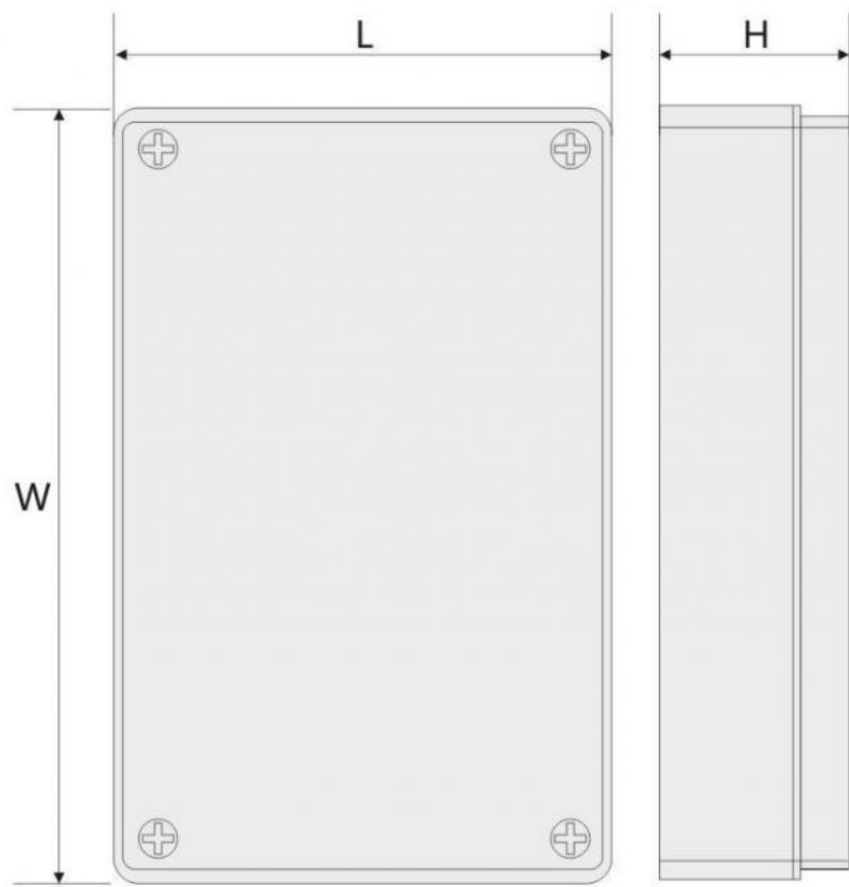
Waterproof, dustproof, rustproof, impact resistance, corrosion resistance, long life time and strong insulation

- 1.Elegant external shape, high firmness.
- 2.Combined body and cover are fixed with four plastic screws that are difficult to fall off.
- 3.Its specification and size can be designed based on the customer requirements.
- 4.Economic and affordable.
5. Net weight only accounts for the iron box of about 1/4, to facilitate handling and operation, no corrosion, good insulation.

Product Parameters

Item NO.	L W H (mm)	IP	GW (kg)	NW (kg)	QTY/CTN (pcs)	Carton Size (mm)
GD-KT	65*50*55	65	21.5	21	300	52*41*29.5
GD-KT	95*65*55	65	25.1	23.6	240	49.5*40.5*46.5
GD-KT	100*100*75	65	20.4	18.9	100	52*42*39.5
GD-KT	110*80*45	65	24.3	22.8	200	46*42*47
GD-KT	110*80*70	65	20	18.5	120	57*33.5*45
GD-KT	110*80*85	65	19.7	18.2	100	57*33.5*45
GD-KT	125*125*75	65	16.6	15.1	60	52*39.5*39.5
GD-KT	125*125*100	65	19.4	17.9	60	52*39.5*52
GD-KT	130*80*70	65	21.4	19.9	120	54*41.5*45
GD-KT	130*80*85	65	25.4	23.9	120	54*50*44.5
GD-KT	160*80*55	65	26	24	100	42*34*57
GD-KT	160*80*95	65	25	23	50	42*34*49.5
GD-KT	170*140*95	65	17.8	16.3	50	57.5*52*49.5
GD-KT	175*125*75	65	17	15.5	50	54*52.5*32
GD-KT	175*125*100	65	11.9	10.4	30	39.5*37*52
GD-KT	175*175*100	65	14.4	12.9	30	54.5*37*53.5
GD-KT	180*80*70	65	20.4	18.9	90	56*41*46
GD-KT	200*150*100	65	28.5	27	30	47*42*67
GD-KT	200*150*130	65	21.6	20.1	40	61.5*41*68.5

GD-KT	200*200*95	65	18.5	17	30	62*42*49.5
GD-KT	200*200*130	65	14.6	13.1	20	42*42*67
GD-KT	250*80*70	65	15.7	14.2	50	52*41*36
GD-KT	250*80*85	65	18.8	17.3	50	52*42*44.5
GD-KT	250*150*100	65	11.5	10	20	52*32*52
GD-KT	250*150*130	65	17.1	15.6	30	52*47*67
GD-KT	280*190*130	65	10.6	9.1	10	40*30*67
GD-KT	280*190*180	65	14.5	13	12	58*40*56
GD-KT	280*280*130	65	8.6	7.1	6	58*58*41
GD-KT	280*280*180	65	9.6	8.1	6	58*58*56
GD-KT	340*280*130	65	9.5	8	6	57.5*35*41
GD-KT	340*280*180	65	7.9	6.4	4	57.5*35*37.5
GD-KT	380*190*130	65	10.9	9.4	8	40*40*54
GD-KT	380*190*180	65	12.5	11	6	40*59*38
GD-KT	380*280*130	65	9.8	8.3	6	57.5*39*41
GD-KT	380*280*180	65	8	6.5	4	57.5*39*37.5



Product Details



Box material : ABS

Stopper material : PVC

Material characteristics : Impact , heat , low temperature and chemical resistance , excellent electrical performance and surface gloss , etc .

Application : Suitable for indoor and outdoor electric , communication , fire fighting apparatus , iron and steel smelting , petrochemical industry , electron , power system , railway , building , mine , air and sea port , hotel , ship , works , waste water treatment equipment , environmental equipment and so on .

Installation : 1 Inside : there are the installation holes in the base for circuit board or din rail .

2 Outside :The products can be directly fixed on the wall or other flat boards with screws or nails via the screw holes in the base .

Outlet hole : Cutting a hole in the PVC stopper as related cable size or installing cable gland to get better waterproof performance

Recommand Product





Company Profile

- **Golden Electric Co.,Ltd** ,was foundad in 2017, we are professional for make **AC and DC electric items** such as **cable gland** , **isolator switch** , **fuse** , **circuit breaker** , **distribution box** , **PV combiner box** ,**surge protector**, **Industrial plug** and **socket**,**Solar product** etc.

- **Golden** has been granted **ISO9001** management system certifications. The comprehensive product line has more than 1000 models which have been approved by **TUV,CE,CQC,SGS,ROHS,SASO**. The productsells well to **UK, Spain, Portugal, Singapore, Turkey, Russia, Korea, South Africa...** more than 60 countries and regions.

- **Golden** is always striving hard to provide the best services and competitive price to all customers.

FAQ

1) Q:How can i trust your company?

A:Golden electric is The top 10 manufacture in China -more than 350 Agents in local market and more than 100 foreign clients make OEM,ODM order from us,Golden electric is a big company, we have cooperation with LS, EKF the world-class companies. Our company over 100 employees, products pass CE,IEC,TUV,SAA, RCM, ROHS certificates.

2) Q:Your products?

A: Golden electric is factory for Junction Box,Isolator Switch,Automatic transfer switch,Surge protector device,distribution box Enclosure, inverter, DC fuse etc. Providing customers very competitive sources, and can be your sourcing agent in China. Goods are following international standards, IE, CE, ISO9001 ,SGS etc.

3) Q: After Sales Service?

A: We will provide the best After-sales Service

4) Q: What's the payment term?

A: Normally 100% T/T in advanced payment. If big order then about 50% advanced payment, balance before shipment.PAYPAL,WESTERN UNION,CASH for small order.

5) Q: Your address ?

A: Locates in Guangzhou province, China,welcome to visit us

6) Q:What's your contact information ?

Send your Inquiry Details in the Below, Click "send" Now!! We will do our best to give you a perfect service.



Guangzhou Golden Electric Co., Ltd.



008618998498109



eva@china-golden.com.cn



chinagoldene.com

Building 4, Self-edited Building, No. 728, Kaichuang Avenue, Yunpu Industrial Zone, Huangpu District,
Guangzhou city,Guangdong province,China