



IP67 ABS Transparent Protection Window Cover Electrical Box for Indoor Circuit Breaker

Our Product Introduction

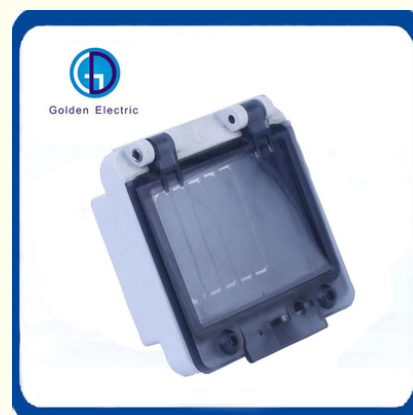
Basic Information

- Place of Origin: China
- Brand Name: Golden Electric /OEM
- Certification: ISO 9001, ISO 9000, ISO 14001, ISO 14000, ISO 20000, OHSAS/ OHSMS 18001, IATF16949
- Model Number: Instrument Box Waterproof Cover
- Minimum Order Quantity: 1
- Packaging Details: Carton/Pallet
- Delivery Time: Peak Season Lead Time: more than 12 months Off Season Lead Time: within 15 workdays
- Payment Terms: LC, T/T, PayPal, Western Union
- Supply Ability: 5000/Month

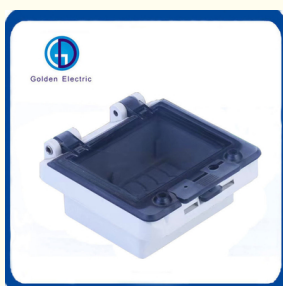
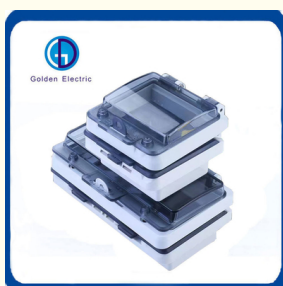


Product Specification

- Model NO.: GD-WS
- Function: Waterproof, Dustproof, Rustproof
- Keyword: Circuit Breaker Cover Box
- Application: Industrial Electric
- Installation Method: Upper Bracket Control
- Size: 98mm*57mm*31mm
- Protection Degree: IP67
- Thickness: 3mm
- Transport Package: Standard Export Carton
- Specification: 2-16ways
- Trademark: Golden Or Natural, Or Customer Brand
- Origin: China
- HS Code: 8538900000
- Supply Ability: 20000PCS/Month
- Type: ABS Transparent Protection Window Cover



More Images



for more products please visit us on chinagoldene.com

Product Description

Product Description

The composition of monitor window is high quality PC, which can be used to install on sealed surface of high protection grade switch box and control cabinet in different industries. User still can observe and operate the equipment even if it is locked. This unit has waterproof, dust-free, shock resistance, and rustproof functions that provide you long lifetime and good insulating property.

1. Suitable for outdoor, waterproof IP67, effectively protect circuit equipment such as circuit breakers, air switches, etc., and prevent rain and moisture from damaging electrical appliances.
2. The panel is made of engineering ABS material, which has high strength and will never change color. The transparent material is PC, which is anti-ultraviolet.
3. The cover of the distribution box adopts a push-type opening and closing method. The mask can be opened only by pressing it lightly. When it is opened, there is a hinge structure with a self-locking position.
4. Distribution box wiring design
Product use: It can be used in control boxes, fire-fighting equipment in public places, as well as factories, docks, and water treatment facilities. Waterproof, moisture-proof and other places.

Product Features

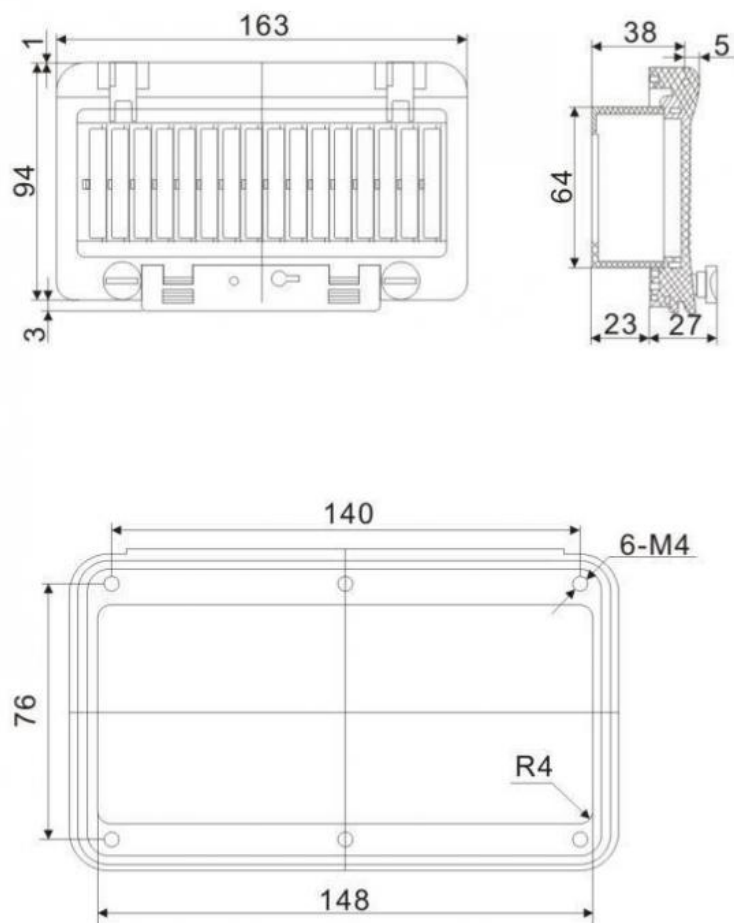


Beautiful appearance, fashionable shape, dust-proof, anti-soaking, anti-corrosion, flame retardant and anti-aging, etc.

Product Parameters

Item NO.	L W H (mm)	IP	GW (kg)	NW (kg)	QTY/CTN (pcs)	Carton Size (mm)
GD-WS	50*78*25	67	15	14	280	53*47*21.5
GD-WS	91*98*25	67	23	22	240	53*47*23.5
GD-WS	91*58*50	67	13	12	100	53*47*23.5
GD-WS	127*98*25	67	26	25	200	53*47*31
GD-WS	127*98*50	67	17	16	100	53*47*31
GD-WS	163*98*25	67	15	14	100	53*47*21.5
GD-WS	163*98*50	67	11	10	50	53*47*21.5
GD-WS	235*98*25	67	21	20	100	53*47*28.5
GD-WS	235*98*50	67	15	14	50	53*47*28.5
GD-WS	307*126*27	67	33	32	90	65*54*33
GD-WS	307*126*55	67	21	20	50	65*54*33

GD-WS	107*95*33	67	16	15	150	53*47*28.5
-------	-----------	----	----	----	-----	------------



Product Details





Waterproof Seal

Made of polyurethane material, good waterproof performance and corrosion resistance.

Fixing Hole

Insert the fixing screw and tighten it, strengthen the cover, and effectively waterproof.



Recommand Product



Company Profile

- Golden Electric Co.,Ltd ,was foundad in 2017, we are professional for make AC and DC electric items such as cable gland, isolator switch , fuse , circuit breaker , distribution box , PV combiner box ,surge protector, Industrial plug and socket,Solar product etc.

- Golden has been granted ISO9001 management system certifications. The comprehensive product line has more than 1000 models which have been approved by TUV,CE,CQC,SGS,ROHS,SASO. The productsells well to UK, Spain, Portugal, Singapore, Turkey, Russia, Korea, South Africa... more than 60 countries and regions.

- Golden is always striving hard to provide the best services and competitive price to all customers.

FAQ

1) Q:How can i trust your company?

A:Golden electric is The top 10 manufacture in China -more than 350 Agents in local market and more than 100 foreign clients make OEM,ODM order from us,Golden electric is a big company, we have cooperation with LS, EKF the world-class companies. Our company over 100 employees, products pass CE,IEC,TUV,SAA, RCM, ROHS certificates.

2) Q:Your products?

A: Golden electric is factory for Junction Box,Isolator Switch,Automatic transfer switch,Surge protector device,distribution box Enclosure, inverter, DC fuse etc. Providing customers very competitive sources, and can be your sourcing agent in China. Goods are following international standards, IE, CE, ISO9001 ,SGS etc.

3) Q: After Sales Service?

A: We will provide the best After-sales Service

4) Q: What's the payment term?

A: Normally 100% T/T in advanced payment. If big order then about 50% advanced payment, balance before shipment.PAYPAL,WESTERN UNION,CASH for small order.

5) Q: Your address ?

A: Locates in Guangzhou province, China,welcome to visit us

6) Q:What's your contact information ?

Send your Inquiry Details in the Below, Click "send" Now!! We will do our best to give you a perfect service.



Guangzhou Golden Electric Co., Ltd.



008618998498109



eva@china-golden.com.cn



chinagoldene.com

Building 4, Self-edited Building, No. 728, Kaichuang Avenue, Yunpu Industrial Zone, Huangpu District,
Guangzhou city,Guangdong province,China