



Ra Series Multiple Sizes IP65 IP55 Waterproof Plastic Box ABS PC Electrical Switch Box

Our Product Introduction

Basic Information

- Place of Origin: China
- Brand Name: Golden Electric /OEM
- Certification: ISO 9001, ISO 9000, ISO 14001, ISO 14000, ISO 20000, OHSAS/ OHSMS 18001, IATF16949
- Minimum Order Quantity: 1
- Packaging Details: Carton/Pallet
- Delivery Time: Peak Season Lead Time: more than 12 months
Off Season Lead Time: within 15 workdays
- Payment Terms: LC, T/T, PayPal, Western Union
- Supply Ability: 5000/Month

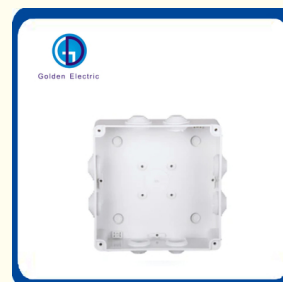
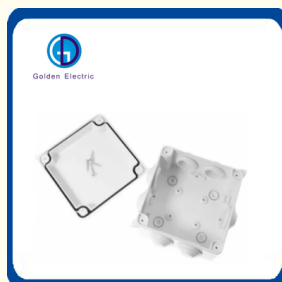


Product Specification

- Color: Grey
- Installing The Product: Switch, RCD, MCB
- Thickness: 1.5mm
- OEM: Available
- Surface Treatment: Powder Coating
- Structure: Protection
- Size: 20, 32, 40, 63A
- Shell Material: PC And ABS Fireproof
- Surface Finish: Power Painting
- Operation Voltage: Low Voltage
- Application Range: Home Use And Outdoor Use
- Transport Package: Standard Export Package
- Specification: Many Different Size
- Trademark: Golden Or Natural Or Customer Brand
- Origin: China



More Images



for more products please visit us on chinagoldene.com

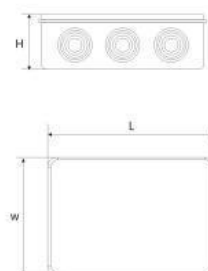
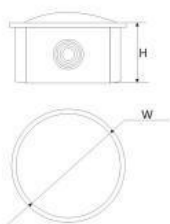
Product Description

Product Description

**RA waterproof IP65 outdoor plastic box enclosure electronic / junction box****Body material:** ABS**Stopper material:** PVC**Material characteristics:** Impact, heat, low temperature and chemical resistance, excellent electrical performance and surface gloss, etc.**Certificates:** CE, ROHS**Application:** Suitable for indoor and outdoor electric, communication, fire fighting apparatus, iron and steel smelting, petrochemical industry, electron, power system, railway, building, mine, air and sea port, hotel, ship, works, waste water treatment equipment, environmental equipment and so on.**Installation:** 1. **Inside:** There are the installation holes in the base for circuit board or din rail.2. **Outside:** The products can be directly fixed on the wall or other flat boards with screws or nails via the screw holes in the base.**Outlet hole:** Cutting a hole in the PVC stopper as related cable size or installing cable gland to get better waterproof performance.

Product Parameters

Item	L W H(mm)	Hole(QTY)	hole size(mm)	IP	GW(kg)	NW(kg)	QTY/CTN(pcs)	Carton Size(cm)
GD-RA	50*50	4	25	55	13.5	12.3	300	46*38*51
GD-RA	80*50	4	25	55	14.7	13.4	240	53*35*62
GD-RA	85*85*50	7	25	55	17.2	16	200	53*41*53
GD-RA	100*100*70	7	25	65	14.9	13.5	100	62*49*35
GD-RA	150*110*70	10	25	65	15.1	13.8	60	67*33*46.5
GD-RA	150*150*70	8	25	65	16.3	15	60	84.5*34*45
GD-RA	200*100*70	8	25	65	16.6	15.3	60	61*46*42
GD-RA	200*155*80	10	36	65	14.5	13.2	40	69.5*43.5*42
GD-RA	200*200*80	12	36	65	18	16.6	40	90*46*40.5
GD-RA	255*200*80	12	36	65	21.9	20.1	40	55*45*78.5
GD-RA	255*200*120	12	36	65	21.9	20.1	30	64*55*62
GD-RA	300*250*120	12	36	65	20.3	18.4	20	61.5*55.5*63
GD-RA	400*350*120	16	36	65	15	13.3	10	74.5*42.5*61.5





CNC processing

Our range of services includes:

- Milling
- Drilling
- Countersinking
- Tapping

Printing

- Maximum print layout 300mm*420mm
- Multi-colour printing
- Well-suited for small series or samples
- Colour gradients are possible





Assembly service

- Typical assembly work at a glance:
- Mechanical processing
- Assembly of enclosure parts
- Pre-wiring or assembly

Special colours

- RAL colours
- HKS colours
- Pantone colours



Recommend Product



Packaging & Shipping

Packaging Details:

Customized Packing: Header card packing, Blister with card packing, Double blister packing, Canister packing, other packing can be supplied according customers request.

Shipping:

1. By Air or by Sea for batch goods,Airport/ Port receiving;
2. Customers specifying freight forwarders or negotiable shipping methods!

Delivery Detail:

Shipped in 7 days after payment



PACKING:

- 1.Common Packing:
100pcs+Polybag+Label+Export Carton
- 2.Customized Packing:
Upon your request

Company Profile

- Golden Electric Co.,Ltd ,was foundad in 2017, we are professional for make **AC and DC electric items** such as cable gland,cable tie ,isolator switch , fuse , breaker , distribution box , PV combiner box ,surge protector, Industrial plug and socket,Solar product and so on.

- Golden has been granted ISO9001 management system certifications. The comprehensive product line has more than 1000 models which have been approved by TUV,CE,CQC,SGS,ROHS,SASO. The productsells well to UK, Spain, Portugal, Singapore, Turkey, Russia, Korea, South Africa... more than 60 countries and regions.

- Golden is always striving hard to provide the best services and competitive price to all customers.

All kind of Distribution box



FAQ

1. Are you trading company or manufacturer ?

We are solar system manufacturer,Our cumulative installed capacity reached 5GW+.

2.Can you supply samples for checking ?

Yes, we can supply free samples for all client.

3.How long is your delivery time?

A1)For Sample: 1-2Days ; A2)For small Orders: 3-5Days; A3)For mass Orders:7-10Days; Anyway, It depend on order qty and payment time.

4.Do you accept OEM business?

We accept OEM with your authorization.

5.How is the after-sale service?

We offer spare parts accordingly and English-speaking engineer offer online service.

6. what kind of certificate you have ?

We have CE, CB,TÜV,SAA etc.

7.What is the service offered by company?

We have the professional engineer team which can design and develop the mould to arrive different customer requirements. We also have the professional sales team to offer good service from pre-sale to after-sale.

How to contact us

Send your Inquiry Details in the Below, please Click "[send](#)" Now!

Good price and sample are waiting for you.



Guangzhou Golden Electric Co., Ltd.



008618998498109



eva@china-golden.com.cn



chinagoldene.com

Building 4, Self-edited Building, No. 728, Kaichuang Avenue, Yunpu Industrial Zone, Huangpu District,
Guangzhou city,Guangdong province,China