



## GRP Polyester SMC Fiberglass Electrical Box for PCB Board Installation and Hinge Lock

Our Product Introduction

### Basic Information

- Place of Origin: China
- Brand Name: Golden Electric /OEM
- Certification: ISO 9001, ISO 9000, ISO 14001, ISO 14000, ISO 20000, OHSAS/ OHSMS 18001, IATF16949
- Minimum Order Quantity: 1
- Packaging Details: Carton/Pallet
- Delivery Time: Peak Season Lead Time: more than 12 months  
Off Season Lead Time: within 15 workdays
- Payment Terms: LC, T/T, PayPal, Western Union
- Supply Ability: 5000/Month

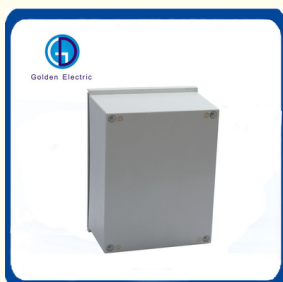


### Product Specification

- Application Range: Power Plants
- Shell Material: Polyester
- Shell Protection Grade: IP65
- Brand: Golden Electric /OEM
- Quality: High Standard
- Name: Outdoor Ground SMC Polyester Enclosure
- Surface Treatment: Powder Coating
- Working Temperature: -40 To 120degree
- Application: Indoor/Outdoor Electric Box
- Feature: Convenient
- Model: Fiberglass Enclosure
- Thickness: 1.0/1.2/1.5/2.0mm
- Logo: Can Be Customized
- Function: Install PCB Board, Terminals, Power Distributing Et



### More Images



for more products please visit us on [chinagoldene.com](http://chinagoldene.com)

## Product Description

### Product Description

#### Polyester enclosure

GIP series are new type, it made by polyesters. The characteristics of the polyesters is its own min 30% fibre glass, make it reached high resistance and mechanical stiffness, have the same effect of metal enclosure which is 3 times heavier than it. Compared with metal enclosure, GIP series are lighter, more adequate for corrosion and dankish environment.

Material: fiberglass/ SMC, self-extinguishable or UV material are on request

Clear door

Inner door

Protection: IP65

Working Temperature: -40°C to +120°C

Impact resistance: IK08

Supply include:

door with lock system, enclosure, wall mount brackets 4pcs/set.

Mounting plate to be supplied separately as to the clients request

#### Advantage:

Resistance against rusting and corrosion by chemical or atmospherical condition

Easy to machine/easy to move around and install because of its lightness.

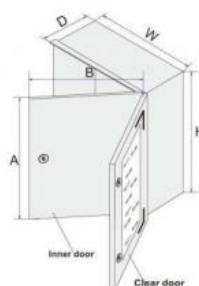
Door hinges allows more than 180° opening

As well as machine control panels and suspension systems protect sensitive electronics in a wide range of industrial applications

OEM/ODM service offered

The use is also convenient for the installation of Terminal Substitution Rail, aluminium case , Button Box, Small Terminal, Signal ,Relay and Sensor, Communication and joint Box etc.

### Product Parameters



#### Polyester enclosure single door



Polyester box(fiber glass box,GRP box)				
Model	Glass door	Dimension(mm)		
		W	H	D
GIP-325	GX-325	250	300	140
GIP-43	GX-43	300	400	200
GIP-44	GX-44	400	400	200
GIP-54	GX-54	400	500	200
GIP-64	GX-64	400	600	230
GIP-65	GX-65	500	600	230
GIP-66	GX-66	600	600	300



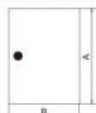
Polyester enclosure with glass door

## Polyester enclosure

### Inner door for polyester box



Inner door for polyester box				
Model metal inner door	Dimension(mm)			
	A	B	For box door W	H
GP-325	150	150	250	300
GP-43	364	245	300	400
GP-44	364	345	400	400
GP-54	484	345	400	500
GP-64	564	345	400	600
GP-65	564	445	500	600
GP-86	764	545	600	800

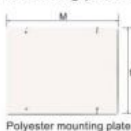


### Modular kit for polyester box

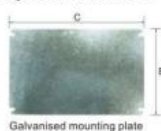


Model	Door		No. of breakers	Breakers qty(PCS)	No. of rows
	W	H			
GDTT43	300	400	2 rows X 12P	24	2
GDTT44	400	400	2 rows X 18P	36	2
GDTT54	400	500	3 rows X 18P	54	3
GDTT64	400	600	4 rows X 18P	72	4
GDTT85	500	600	4 rows X 23P	92	4
GDTT86	600	800	4 rows X 29P	145	5

### Mounting plate for polyester enclosure



Polyester mounting plate



Galvanised mounting plate

Polyester mounting plate			Galvanised mounting plate		
Model	Dimension(mm)		Model	Dimension(mm)	
	M	N		C	E
GP-325	221	238	GI-325	263	201
GP-43	311	286	GI-43	353	245
GP-44	308	386	GI-44	349	345
GP-54	408	386	GI-54	453	345
GP-64	511	386	GI-64	553	345
GP-65	508	486	GI-65	553	447
GP-86	708	581	GI-86	749	540

### Accessories for polyester enclosure



Key lock  
model: MS705-3E  
package: 1pc



Standard lock  
model: MS-01  
package: 1pc



Wall mount brackets  
model: GXP-01 package: 4pcs/set

## Installation Instructions



### Install the backplane

High quality removable galvanized sheet for easy installation of electrical component.

## Mounting Wall Mounting Holes

The box can be fixed on the wall for easy installation.  
Simple is more effective.



## Fixed accessories

Convenient wall mounting, making installation convenient and fast.

### Detailed Photos

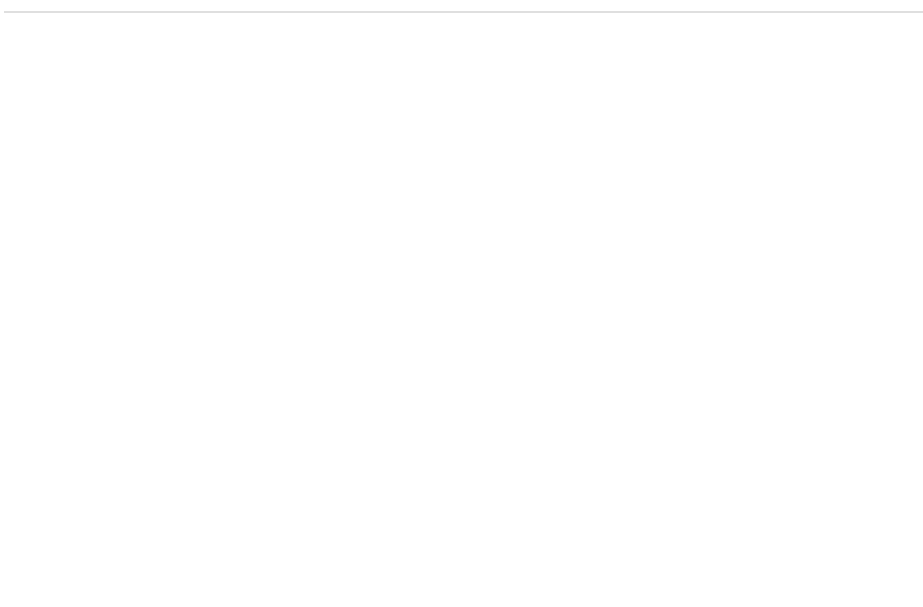




#### Packing



#### Recommand Product





## All kind of Distribution box



PV COMBINER BOX



PV FUSE



PV SURGE PROTECT



PV MOULD BREAKER



PV CABLE



PV MINI BREAKER



PV ISOLATOR SWITCH



PV MC4 CONNECTOR



Golden Electric



Golden Electric



Guangzhou Golden Electric Co. Ltd started manufacturing of PV combiner box, Automatic transfer switch, Circuit breaker, Distribution box, Surge Protector Device, Fuse in the year 2006 with a strong team of Automatic transfer switch, Circuit breaker, Surge Protector Device, Fuse and Distribution box background.

Guangzhou Golden Electric Co. Ltd offer customers complete solar system and low voltage system is one its key item on which the company has achieved a mile-stone on quality. Due to this the company has earned a good faith from more than thousands of Private entreprenour and Government policy maker. Eventualy the company started manufacturing of Solar DC product and keeping good example in China and become the first one of company to making solar new energy product. Now we have 2 big factory for manufacturing PV System and Low-voltage Electrical Product, Circuit Breaker, Contactor, Isolator Switch, Combiner Box, Automatic Transfer Switch. The factory is one of the largest independent manufacturing unit for manufacturing of high-quality, custom solutions for power systems for big or small Industrial units, Commercial complexes and Government utilities.

## FAQ

### 1) I trust your company?

A: Golden electric is The top 10 manufacture in China - more than 350 Agents in local market and more than 100 foreign clients make OEM, ODM order from us. Golden electric is a big company, we have cooperation with LS, EKF the world-class companies. Our company over 100 employees, products pass CE, IEC, TUV, SAA, RCM, ROHS certificates.

### 2) Q: Your products?

A: Golden electric is factory for Automatic transfer switch, Surge protector device, distribution box Enclosure, inverter, DC fuse etc. Providing customers very competitive sources, and can be your sourcing agent in China. Goods are following international standards, IE, CE, ISO9001, SGS etc.

### 3) Q: Do you have forwarder?

A: Yes, we have good forwarder cooperated over 10 years, they help us import and export. For small package orders, suggest to use by Express.

### 4) Q: Your address?

A: Locates in Guangzhou province, China, welcome to visit us

### 5) Q: What's the distribution box guarantee?

A: 2 years warranty. If customer's problem, then customer burden. If our problem, then we send new goods to customer to replace asap.

### 6) Q: What's about MOQ? Delivery time?

A: 1 pcs for SMC Enclosure. Normally less than with stock, quick support.

### 7) Q: What's the payment term?

A: Normally 100% T/T in advanced payment. If big order then about 50% advanced payment, balance before shipment. PAYPAL, WESTERN UNION, CASH for small order.

### 8) Q: What's your contact information?

**Weclome send inquiry to us !we will reply you in 24hours !**



**Guangzhou Golden Electric Co., Ltd.**



008618998498109



eva@china-golden.com.cn



chinagoldene.com

Building 4, Self-edited Building, No. 728, Kaichuang Avenue, Yunpu Industrial Zone, Huangpu District,  
Guangzhou city, Guangdong province, China