

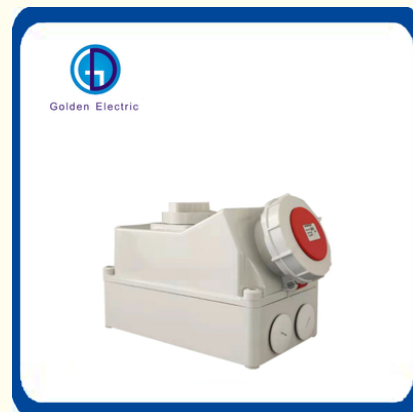


White IP67 63A Interlocked Socket Customization Small Size With Switch 3pins

Our Product Introduction

Basic Information

- Place of Origin: China
- Brand Name: Golden Electric /OEM
- Certification: ISO 9001, ISO 9000, ISO 14001, ISO 14000, ISO 20000, OHSAS/ OHSMS 18001, IATF16949
- Minimum Order Quantity: 1
- Packaging Details: Carton/Pallet
- Delivery Time: Peak Season Lead Time: more than 12 months
Off Season Lead Time: within 15 workdays
- Payment Terms: LC, T/T, PayPal, Western Union
- Supply Ability: 5000/Month



Product Specification

- Nominal Voltage: 220V
- Brand: Golden Electric
- Feature: Safe, Durable, Timesaving
- Color: White Blue Yellow Red
- Rated Voltage: 110V/220V/380V/415V
- Protection: IP44/IP67/IP55
- Earth Contact Position: 6h, 9h
- Material: PA66
- Rated Current: 16A 32A 63A 125A
- Temperature Range: -25- +80
- Type: With Switch
- Transport Package: Standard Export Carton
- Specification: 2P, 3P, 3P+N, 3P+N+E
- Trademark: Golden Electric
- Origin: China



More Images



for more products please visit us on chinagoldene.com

Product Description

Product Description

63A 3P 5P International Standard Socket with Switch and Mechanical Interlock IP67

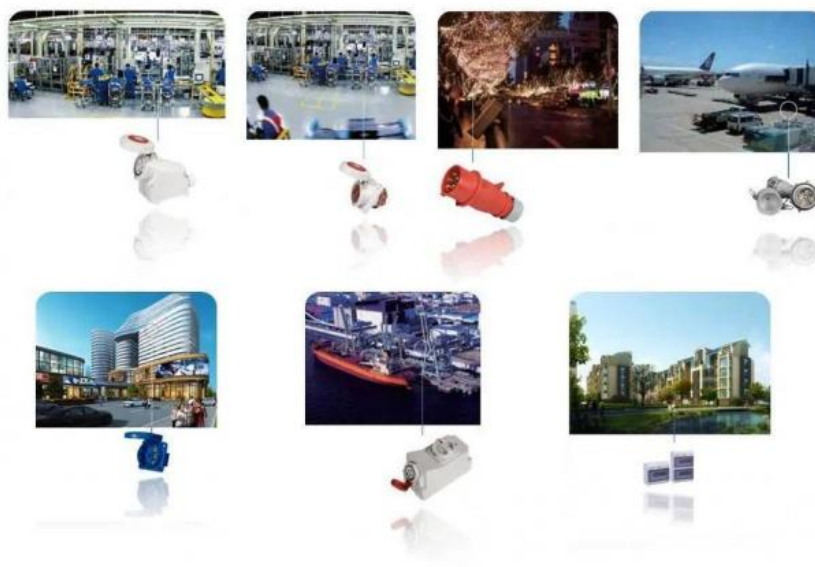


参数 Parameter

尺寸(毫米) size(mm)	壳场 ATD 16				壳场 ATD 16				壳场 ATD 32				壳场 ATD 32				壳场 ATD 63				壳场 ATD 63				
	极数 Poles			3	4	5	极数 Poles			3	4	5	极数 Poles			3	4	5	极数 Poles			3	4	5	
e	225	225	225	M	2×25	2×25	2×25	e	225	225	225	M	2×25	2×25	2×25	e	262	262	262	M	2×40	2×40	2×40		
b	118	118	118	M*	25/32	25/32	26/32	b	118	118	118	M*	25/32	25/32	25/32	b	162	162	162	M*	40	40	40		
c	144	146	147	将规格值乘以1平方毫米 从最小值至大 Conductor cross-sectional area (mm²)Min. To Max				c	152	152	153	将规格值乘以1平方毫米 从最小值至大 Conductor cross-sectional area (mm²)Min. To Max				c	196	196	196	将规格值乘以1平方毫米 从最小值至大 Conductor cross-sectional area (mm²)Min. To Max					
d	208	208	208					d	208	208	208					d	242	242	242						
e	101	101	101	1.5-2.5				e	101	101	101	4-6				e	142	142	142	10-16					
f	6.3	6.3	6.3					f	6.3	6.3	6.3					f	8.1	8.1	8.1						
g	8	8	8					g	8	8	8					g	8	8	8						
h	252	252	259					h	268	268	274					h	300	300	300						

Application

**Petrochemical Engineering, Mineral Industry, Electric Power
Railway, Airport, Mine Diggings, Construction site, Wharf
Water treatment plant
Hotel, Shopping Mall, House**



Product Parameters

Ingress protection	Rated Current (A)	Rated Voltage range (V)	Number of poles	Code
IP44	16	110-130	2+E	IPS1-013-4 65
IP44	32	110-130	2+E	IPS1-023-4 14
IP44	16	220-240	2+E	IPS1-013 15
IP44	32	220-240	2+E	IPS1-023 16
IP67	63	220-240	2+E	IPS1-033 17

IP44	16	380-415	3+E	IPS1-014	18
IP44	32	380-415	3+E	IPS1-024	619
IP67	63	380-415	3+E	IPS1-034	20
IP44	16	220-380/240-415 3+N+E		IPS1-015	21
IP44	32	220-380/240-415 3+N+E		IPS1-025	22
IP67	63	220-380/240-415 3+N+E		IPS1-035	23
IP44	16	110-130	2+E	IPS1-113-425	
IP44	32	110-130	2+E	IPS1-123-426	
IP44	16	220-240	2+E	IPS1-113	27
IP44	32	220-240	2+E	IPS1-123	28
IP67	63	220-240	2+E	IPS1-133	29
IP44	16	380-415	3+E	IPS1-114	30
IP44	32	380-415	3+E	IPS1-124	31
IP67	63	380-415	3+E	IPS1-134	32
IP44	16	220-380/240-415 3+N+E		IPS1-115	33
IP44	32	220-380/240-415 3+N+E		IPS1-125	34
IP67	63	220-380/240-415 3+N+E		IPS1-135	35

Packaging & Shipping



Packing & Delivery

Standard exporting package , Carton:.

Customized by Your requirement with substantial quantity .

Company Profile



- Golden Electric Co.,Ltd ,was foundad in 2017, we are professional for make **AC and DC electric items such as cable gland,cable tie ,isolator switch , fuse , breaker , distribution box , PV combiner box ,surge protector, Industrial plug and socket,Solar product** and so on.



- Golden has been granted ISO9001 management system certifications. The comprehensive product line has more than 1000 models which have been approved by TUV,CE,CQC,SGS,ROHS,SASO. The productsells well to UK, Spain, Portugal, Singapore, Turkey, Russia, Korea, South Africa... more than 60 countries and regions.

- Golden is always striving hard to provide the best services and competitive price to all customers.

Related Product



FAQ

1. Q: Are you manufacturer or trade company?

A: We are manufacturer and specialized in terminal block for 20 years.

2. Q : Can you make customized products and customized packing?

A: Yes. We made a lot of customized products for our customer before. And we made many moulds for our customers already.

About customized packing, we can put your Logo or other info on the packing. It is no problem.

3. Q : What about your delivery time?

A: We have a lot of products in stock. We can send the stock products in 3 work days.

If without stock, or stock is not enough, we will check the delivery time with you.

4. Q: What kind of payment do you accept ? Can I pay RMB ?

A: We accept T/T (30% as deposit, and 70% balance after you receive copy of B/L) L/C. And you can also pay money in RMB.

5. Q : How to ship my order ? Is it safe?

A: For small package, we will send it by Express, such as DHL, FedEx, UPS, TNT, EMS. That's a Door to Door service.

For big packages, we will send them by Air or By sea. We will use good packing and ensure the safety.

We will be responsible to any product damage caused on delivery.

Any requirements or question, welcome to "Send" us an e-mail Now!!!

It's our great honor to do services for you! You also can get the FREE SAMPLES soon.



Guangzhou Golden Electric Co., Ltd.



008618998498109



eva@china-golden.com.cn



chinagoldene.com

Building 4, Self-edited Building, No. 728, Kaichuang Avenue, Yunpu Industrial Zone, Huangpu District,
Guangzhou city, Guangdong province, China