

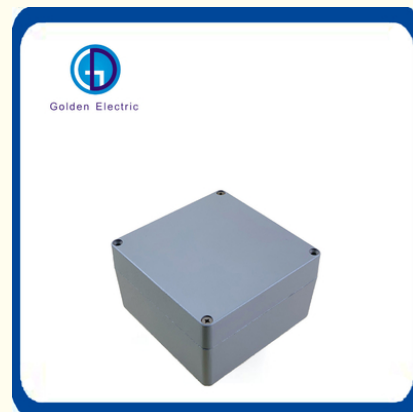


Waterproof Enclosure IP66 Electrical Junction Boxes Outdoor With Different Sizes

Our Product Introduction

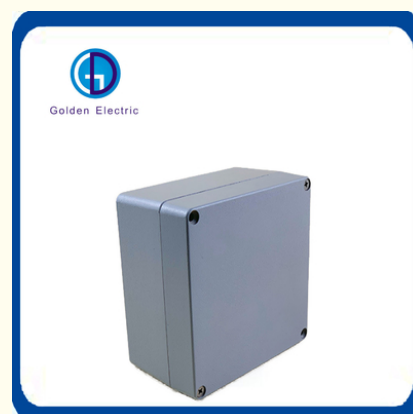
Basic Information

- Place of Origin: China
- Brand Name: Golden Electric /OEM
- Certification: ISO 9001, ISO 9000, ISO 14001, ISO 14000, ISO 20000, OHSAS/ OHSMS 18001, IATF16949
- Minimum Order Quantity: 1
- Packaging Details: Carton/Pallet
- Delivery Time: Peak Season Lead Time: more than 12 months Off Season Lead Time: within 15 workdays
- Payment Terms: LC, T/T, PayPal, Western Union
- Supply Ability: 5000/Month

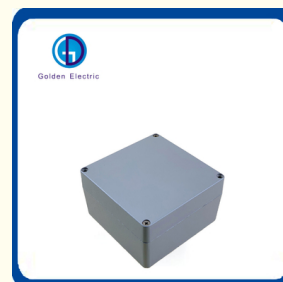
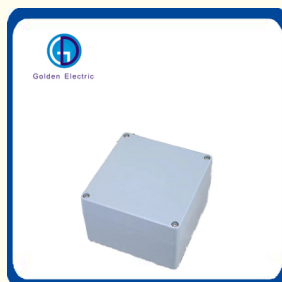
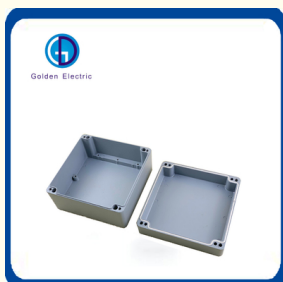


Product Specification

- Color: Grey
- Installing The Product: Switch, RCD, MCB
- Thickness: 1.5mm
- OEM: Available
- Surface Treatment: Powder Coating
- Structure: Protection
- Size: 20, 32, 40, 63A
- Shell Material: PC And ABS Fireproof
- Surface Finish: Power Painting
- Operation Voltage: Low Voltage
- Application Range: Home Use And Outdoor Use
- Transport Package: Standard Export Package
- Specification: Many Different Size
- Trademark: Golden Or Netural Or Customer Brand
- Origin: China



More Images



for more products please visit us on chinagoldene.com

Product Description

Product Description



Top Quality Waterproof IP66 aluminum die cast junction box

Features

1. Aluminum alloy die-casting forming, high temperature resistant, Corrosion-Proof, can be used in harsh environments.
2. Surface Treatment: Frosting (Light grey), Smooth (steel grey).
3. Application: Terminal box, distributionbox, instrument box, signal junction box, stope, coastal factories, sewage treatment works and other environments.
4. Protection: IP66

Product Parameters

Item NO.	L W H(mm)	IP	GW(kg)	NW(kg)	QTY/CTN(pcs)	Carton Size(cm)
GD-ZL	80*75*60	66	21	20	64	37*35.5*29
GD-ZL	111*64*37	66	29	28	100	48*36*25
GD-ZL	125*80*60	66	24	23	48	42*35*27
GD-ZL	150*100*80	66	25	24	30	46*33*35
GD-ZL	160*100*65	66	24	23	34	43*35*34
GD-ZL	160*160*75	66	34	33	30	50*36*44
GD-ZL	160*160*90	66	32	31	24	50*36*44
GD-ZL	175*80*58	66	19	18	32	38*36*30
GD-ZL	240*160*75	66	26	25	16	50*36*36
GD-ZL	240*160*100	66	28	27	16	50*36*46
GD-ZL	250*80*65	66	20	19	20	36*37*29
GD-ZL	125*80*80	66	18	17	16	36*37*29
GD-ZL	265*185*95	66	33	32	16	55*40*45
GD-ZL	265*185*130	66	29	28	12	55*40*45
GD-ZL	255*200*120	66	29	28	8	50*36*44
GD-ZL	300*250*120	66	27	26	6	50*36*44
GD-ZL	400*350*120	66	24	23	4	50*36*37

Details

The box use stainless steel screws,so they don't rust.





The fixing device can be provided as customers' requirements.

The sealing ring has high corrosion resistance and waterproof grade.



The box adopts inner rotating type nuts,so they can be better to fix din rail,terminals and circuit board.

Holes can be opened as customers'requirements



More Product



Recommend Product



Packaging & Shipping

Packaging Details:

Customized Packing: Header card packing, Blister with card packing, Double blister packing, Canister packing, other packing can be supplied according customers request.

Shipping:

1. By Air or by Sea for batch goods,Airport/ Port receiving;
2. Customers specifying freight forwarders or negotiable shipping methods!

Delivery Detail:

Shipped in 7 days after payment



PACKING:

- 1.Common Packing:
100pcs+Polybag+Label+Export Carton
- 2.Customized Packing:
Upon your request

Company Profile

- Golden Electric Co.,Ltd ,was foundad in 2017, we are professional for make AC and DC electric items such as cable gland,cable tie ,isolator switch , fuse , breaker , distribution box , PV combiner box ,surge protector, Industrial plug and socket,Solar product and so on.

- Golden has been granted ISO9001 management system certifications. The comprehensive product line has more than 1000 models which have been approved by TUV,CE,CQC,SGS,ROHS,SASO. The productsells well to UK, Spain, Portugal, Singapore, Turkey, Russia, Korea, South Africa... more than 60 countries and regions.

- Golden is always striving hard to provide the best services and competitive price to all customers.



All kind of Distribution box



FAQ

1. Are you trading company or manufacturer ?

We are solar system manufacturer, Our cumulative installed capacity reached 5GW+.

2. Can you supply samples for checking ?

Yes, we can supply free samples for all client.

3. How long is your delivery time?

A1) For Sample: 1-2 Days ; A2) For small Orders: 3-5 Days; A3) For mass Orders: 7-10 Days; Anyway, It depend on order qty and payment time.

4. Do you accept OEM business?

We accept OEM with your authorization.

5. How is the after-sale service?

We offer spare parts accordingly and English-speaking engineer offer online service.

6. What kind of certificate you have ?

We have CE, CB, TÜV, SAA etc.

7. What is the service offered by company?

We have the professional engineer team which can design and develop the mould to arrive different customer requirements. We also have the professional sales team to offer good service from pre-sale to after-sale.

How to contact us

Send your Inquiry Details in the Below, please Click "[send](#)" Now!

Good price and sample are waiting for you.



Guangzhou Golden Electric Co., Ltd.



008618998498109



eva@china-golden.com.cn



chinagoldene.com

Building 4, Self-edited Building, No. 728, Kaichuang Avenue, Yunpu Industrial Zone, Huangpu District,
Guangzhou city, Guangdong province, China