



## Sample Xb2 Series Waterproof Push Button Switch with Spring Return IP65 Protection Level

Our Product Introduction

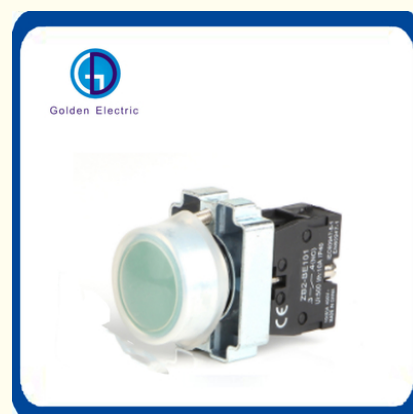
### Basic Information

- Place of Origin: China
- Brand Name: Golden Electric /OEM
- Certification: ISO 9001, ISO 9000, ISO 14001, ISO 14000, ISO 20000, OHSAS/ OHSMS 18001, IATF16949
- Minimum Order Quantity: 1
- Packaging Details: Carton/Pallet
- Delivery Time: Peak Season Lead Time: more than 12 months Off Season Lead Time: within 15 workdays
- Payment Terms: LC, T/T, PayPal, Western Union
- Supply Ability: 5000/Month

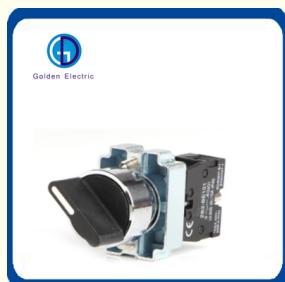


### Product Specification

- Model NO.: E-110 SERIES
- Number Of Switch: Multi Control Switch
- Structure: Power Built-in Type
- Usage: Control Button, Start Button, Control Switch, Emergency Stop, Single Speed
- Kind: Single-pole On-off Switch
- Contact Type: Type A Contact
- Detection Method: Retro-reflective Mode
- Brand: Industrial
- Max. Voltage: 220V/500V
- AC Rated Operation Current: >15A
- Protection Level: IP65
- Holes: According To Customer Demand
- Color: Orange Red
- External Size: Standard



### More Images



for more products please visit us on [chinagoldene.com](http://chinagoldene.com)

## Product Description

### Product Description

The push button series was used in contral circuit of AC 50Hz or 60Hz,voltage to 66v,DC voltage up Button and button with lamp to 440V below,it is used for controlling signal and interlocking,The main body adopts zinc alloy or high grade anti-flaming plastic.the contact adopts special silver alloy,so it has strong anti-electrical erosion property, the signal lamp series is suitable for electrical applance circuit of AC voitage 380V,50Hz or 60Hz,DC voltage up to 380V below, it is used as kinds of lights indication signal,waning signal,accident signal and other signals.Our products comply with GB/T14048.1 and IEC60947-5-1.all products were get CE.RoHS certification.

### Work environment

- 1.Environment temperature:-25~+55
- 2.Air relative humidity:<85%
- 3.Nomal work when the vibration frequency is 2-80Hz,the acceleration is 0.79.
- 4.Pollution grade is 3,protection grade is above ip65.
- 5.Altitude:2000<m.



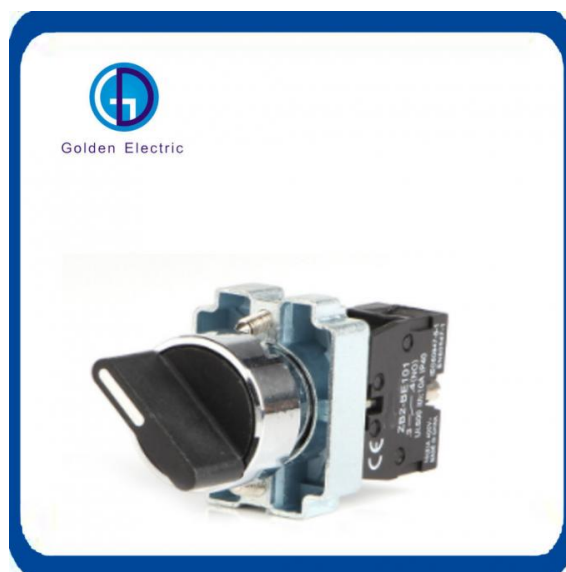
### EXCELLENT DESIGN

The plastic cover is good-looking,strong and easy for handing.It has good structure and big area of contact.The forward and backward control can be mechanically locked in a reciprocal direction.It also can be locked in a reciprocal direction by the circuit if necessary,and is therefore more safety in operation.

### HIGH QUALITY

It also has IP65 dust proof and water proof level thus it is suitable for operating in open area,dusty environment,rainy.snowy weather conditions by wet hands for controlling the electric circuit,conveyer belt and construction apparatus.

The product meets the standards of Q/YYD02-00,GB14048,5-2001 and EN60947-5-1:1997  
Certification: ISO9001, SGS, CTI, ROHS



### Product Parameters

Basic technical parameter of button			Basic technical parameter of signal lamp	
Rated insulation voltage	AC 600V (50Hz/60Hz)		Insulation resistance	> 50M Ω
Conventional heating current	10A		Contact resistance	< 25M Ω
Insulation resistance	50M Ω		Pf withstand voltage	AC 2.5KV 1min
Contact resistance	25M Ω		Voltage wave	± 20%
Mechanical life	100x10 <sup>4</sup> (Pushbutton)	50x10 <sup>4</sup>	Brightness	60cd 1m <sup>2</sup>
Electrical life	50x10 <sup>4</sup> (Pushbutton)	25x10 <sup>4</sup>	Continuous working life	10x104h
		Selector switch Key switches		
		Selector switch Key switches		

## Packaging & Shipping

**Packing:** Standard export carton packing

**Shipping:** 1. By Air or by Sea for batch goods, Airport/ Port receiving;  
2. Customers specifying freight forwarders or negotiable shipping methods!



## Company Profile

- Golden Electric Co.,Ltd ,was foundad in 2017, we are professional for make AC and DC electric items such as isolator switch , fuse , breaker , distribution box , PV combiner box ,surge protector, Industrial plug and socket,Solar product and so on.

- Golden has been granted ISO9001 management system certifications. The comprehensive product line has more than 1000 models which have been approved by TUV,CE,CQC,SGS,ROHS,SASO. The productsells well to UK, Spain, Portugal, Singapore, Turkey, Russia, Korea, South Africa... more than 60 countries and regions.

- Golden is always striving hard to provide the best services and competitive price to all customers.

## RELATED PRODUCT



If you are interested in our products , please feel free to contact with us ,we will try our best to meet your demand.

## FAQ

**Q 1. What's the payment term?**

A. We accept TT, Western Union, Paypal,L/C And Ali trade assurance.

**Q 2. How's the delivery time ?**

A. It rests with the quantity you need, 1-30 days usually.

**Q 3. The standard of package?**

A. Normally are cartons, but also we can pack it according to your requirement.

**Q4.Could you offer Form A Form E or C/O ?**

A. It's totally not a problem. We can prepare relative documents to foreign affairs office or other office to apply for this certificate.

**Q5.Would you accept to use other logo ?**

A. If you have good quantity, it absolute no problem to do OEM.

**How to contact us**

Send your Inquiry Details in the Below, please Click "Send" Now!

Good price and sample are waiting for you.



**Guangzhou Golden Electric Co., Ltd.**



008618998498109



eva@china-golden.com.cn



chinagoldene.com

Building 4, Self-edited Building, No. 728, Kaichuang Avenue, Yunpu Industrial Zone, Huangpu District,  
Guangzhou city,Guangdong province,China