



Industrial IP66 Weather Protected Changeover Switch Customized for Your Requirements

Our Product Introduction

Basic Information

- Place of Origin: China
- Brand Name: Golden Electric /OEM
- Certification: ISO 9001, ISO 9000, ISO 14001, ISO 14000, ISO 20000, OHSAS/ OHSMS 18001, IATF16949
- Minimum Order Quantity: 1
- Packaging Details: Carton/Pallet
- Delivery Time: Peak Season Lead Time: more than 12 months Off Season Lead Time: within 15 workdays
- Payment Terms: LC, T/T, PayPal, Western Union
- Supply Ability: 5000/Month

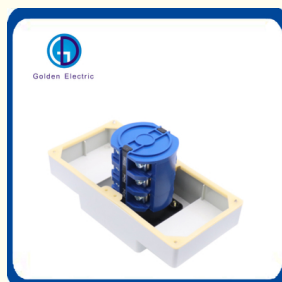


Product Specification

- Model NO.: GD-IP66
- Transport Package: 30PCS/CTN
- Trademark: Golden Electric Or Customize
- Origin: China
- HS Code: 8537209000
- Supply Ability: 5000/Month
- Certification: ISO9001:2000
- Product Name: Changeover Switch
- Current: 63A
- Max. Voltage: 500V
- Material: Plastic
- Color: As The Picture
- Samples: US\$ 10/Piece 1 Piece(Min.Order) | Request Sam
- Customization: Available | Customized Request



More Images



for more products please visit us on chinagoldene.com

Product Description

GUANGZHOU GOLDEN ELECTRIC Co., Ltd. is professional supplier of Electrical products.

We are Specialized in producing and supplying portable distribution box, waterproof plug, socket, wall switch, waterproof plastic and Aluminum box. all products comply with IEC, A S/NZS standard. passed CE, IP66, ROHS certificates.

Advanced process technologies, standard production processes and precise testing equipment, all ensure the products we supply can satisfy with customers' need. Our Cooperative factory has 15 injection molding machines, 16 CNC and 13 automatic lathes and 12 testing equipment. at present we have exported to many countries and have serve these customers with professional electrical solution.

Golden Electric especially has rich experience with custom-made outdoor and indoor distribution box designing, drawing and assembling. We also have a professional team to serve new and existing customers sincerely.

Welcome to visit our factory. Thanks

Product Description



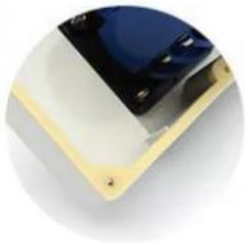
Appearance and size



**Nickel Plating On Copper
Material H59-1**



**Each Joint Adopts High
Strength Sealing Rubber**



Internal sealant strip



**PC Plastic Material
Wear Resistance And
Compression Resistance**



Certification	SAA
Place of Origin	China
Brand Name	GD
Model Number	56SW363C/O
Protection Level	IP66
Max. Current	63A
Max. Voltage	500V
LED	Other
Material	Plastic
OEM	Accept
Product Name	Changeover switch
Color	As the picture

Other Hot-Selling Models

	<p>56/32</p> <p>开关 Switch 10A-250V~ IP56</p>		<p>56UKC313</p> <p>开关插座 Switch Socket 13A-250V~ IP55</p>
	<p>56A1310/56A1315</p> <p>10/15A-250V~ IP66</p>		<p>56/32LE</p> <p>开关 Switch 10A-250V~ IP56</p>
	<p>THREE PHASE SQUARE CHANGEOVER SWITCH</p> <p>Description: Three phase 3 pole 32A & 32A square changeover or forward reverse switch. IP55 rated. Available in standard grey and selective orange.</p> <p>Code: 56AW32C-0 56AW32C-0</p>		<p>THREE PHASE SQUARE CHANGEOVER SWITCH</p> <p>Description: Three phase 3 pole 40A & 40A square changeover or forward reverse switch. IP55 rated. Available in standard grey and selective orange.</p> <p>Code: 56SW32C-0</p>
	<p>THREE PHASE 5 QUADRATE PIN SOCKET/OUTLET</p> <p>Description: Three phase 5 quadrate pin socket. IP44 rated. Available in standard grey 32A.</p> <p>Code: 3P+N+E ES532</p>		<p>THREE PHASE 4 QUADRATE PIN SOCKET/OUTLET</p> <p>Description: Three phase 4 quadrate pin socket. IP44 rated. Available in standard grey 32A.</p> <p>Code: 3P+E ES420</p>
	<p>THREE PHASE 5 QUADRATE PIN SOCKET/OUTLET</p> <p>Description: Three phase 5 quadrate pin socket. IP44 rated. Available in standard grey 32A.</p> <p>Code: 3P+N+E ES520</p>		<p>THREE PHASE 4 QUADRATE PIN SOCKET/OUTLET</p> <p>Description: Three phase 4 quadrate pin socket. IP44 rated. Available in standard grey 32A.</p> <p>Code: 3P+E ES432</p>

Packaging & Shipping



Q1: Are you a factory or trading company

A1: We are a factory, we can guarantee our price is first-hand, very cheap and competitive.

Q2: How does your factory do regarding quality control?

A2: All the products will be 100% checked before the shipment

Q3: When can I get the price?

A3: Usually we quote within 24 hours after we get your inquiry.

Q4: How could I get a sample?

A4: if you can not buy our product in your local area, we will ship a sample to you. You will be charged a sample price plus all related shipping costs. Express delivery charge depends on the quantity of the samples.

Q5: What is the price of shipping?

A5: Depending upon the port of delivery, prices vary.



Guangzhou Golden Electric Co., Ltd.



008618998498109



eva@china-golden.com.cn



chinagoldene.com

Building 4, Self-edited Building, No. 728, Kaichuang Avenue, Yunpu Industrial Zone, Huangpu District,
Guangzhou city, Guangdong province, China