



ROHS Certified Single Phase Voltage/Current Leakage Protector with Kwh Meter Included

Our Product Introduction

Basic Information

- Place of Origin: China
- Brand Name: Golden Electric /OEM
- Certification: ISO 9001, ISO 9000, ISO 14001, ISO 14000, ISO 20000, OHSAS/ OHSMS 18001, IATF16949
- Minimum Order Quantity: 1
- Packaging Details: Carton/Pallet
- Delivery Time: Peak Season Lead Time: more than 12 months Off Season Lead Time: within 15 workdays
- Payment Terms: LC, T/T, PayPal, Western Union
- Supply Ability: 5000/Month



Product Specification

- Current Type: AC
- Display: Dual LED Display
- Frequency: 50/60 Hz
- Efficiency: High Efficiency
- Functions: Over/Under Voltage, Over Current
- Transport Package: Standard Carton
- Specification: Different Sizes And Specifications
- Trademark: Golden Electric Or Customize
- Origin: China
- HS Code: 8537209000
- Supply Ability: 5000/Month
- Type: Signal Type Arrester
- Application: Protector
- Operation Voltage: High Voltage
- Certification: ROHS, ISO9001



More Images

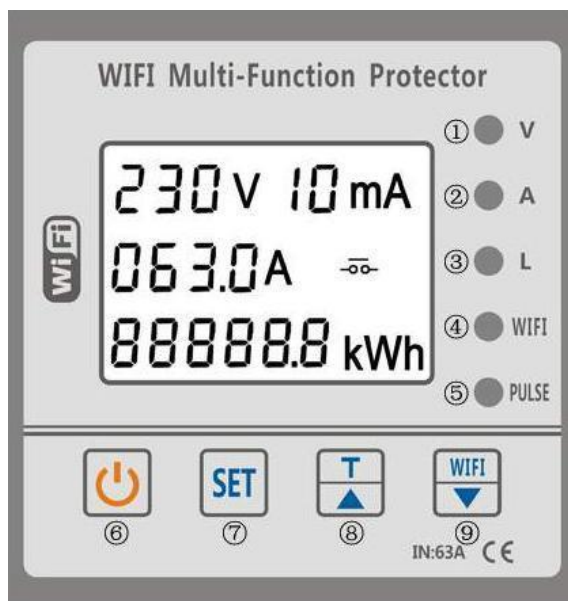


for more products please visit us on chinagoldene.com

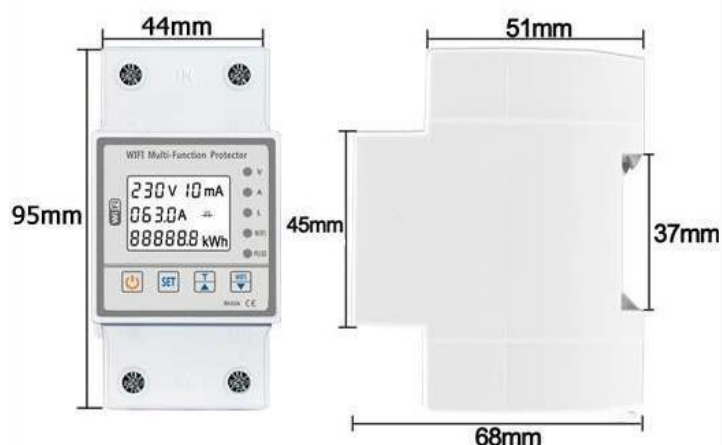
Product Description

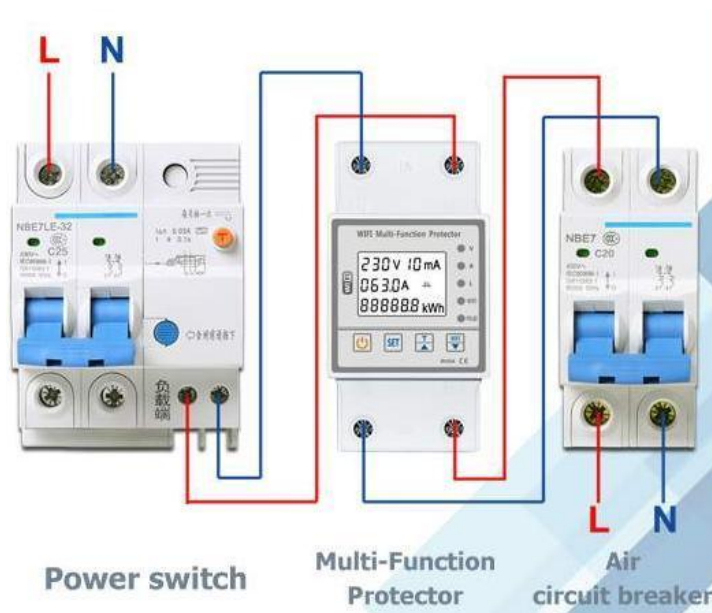
Product Description

Single Phase Voltage/Current Leakage Protector With Kwh Meter integrates over-voltage protection, under-voltage protection, over-current protection and integrated intelligent protector. When there is over-voltage, under-voltage and over-current solid barriers in the line, this product can instantly cut off the circuit, avoiding unnecessary damage to electrical equipment. When the circuit returns to normal, the protector can automatically restore the circuit to make the electrical equipment work normally. The overvoltage value, undervoltage value, overcurrent value, circuit recovery time value and overcurrent protection reset time value of this product can be set by themselves. Adjust the corresponding parameters according to local actual conditions and electrical usage conditions.



1. Over/under voltage alarm indicator
2. Over-current alarm indicator
3. Leakage alarm indicator
4. WIFI indicator
5. Kilo-watt hour meter pulse indicator
6. Manual switch
7. Set key: Long press for 3 seconds to enter the setting interface
8. Adjustment key+
- Test key: Long press for 3 seconds to test the leakage
9. Adjustment key-
- WIFI key: Long press for 3 seconds to configure the Wifi

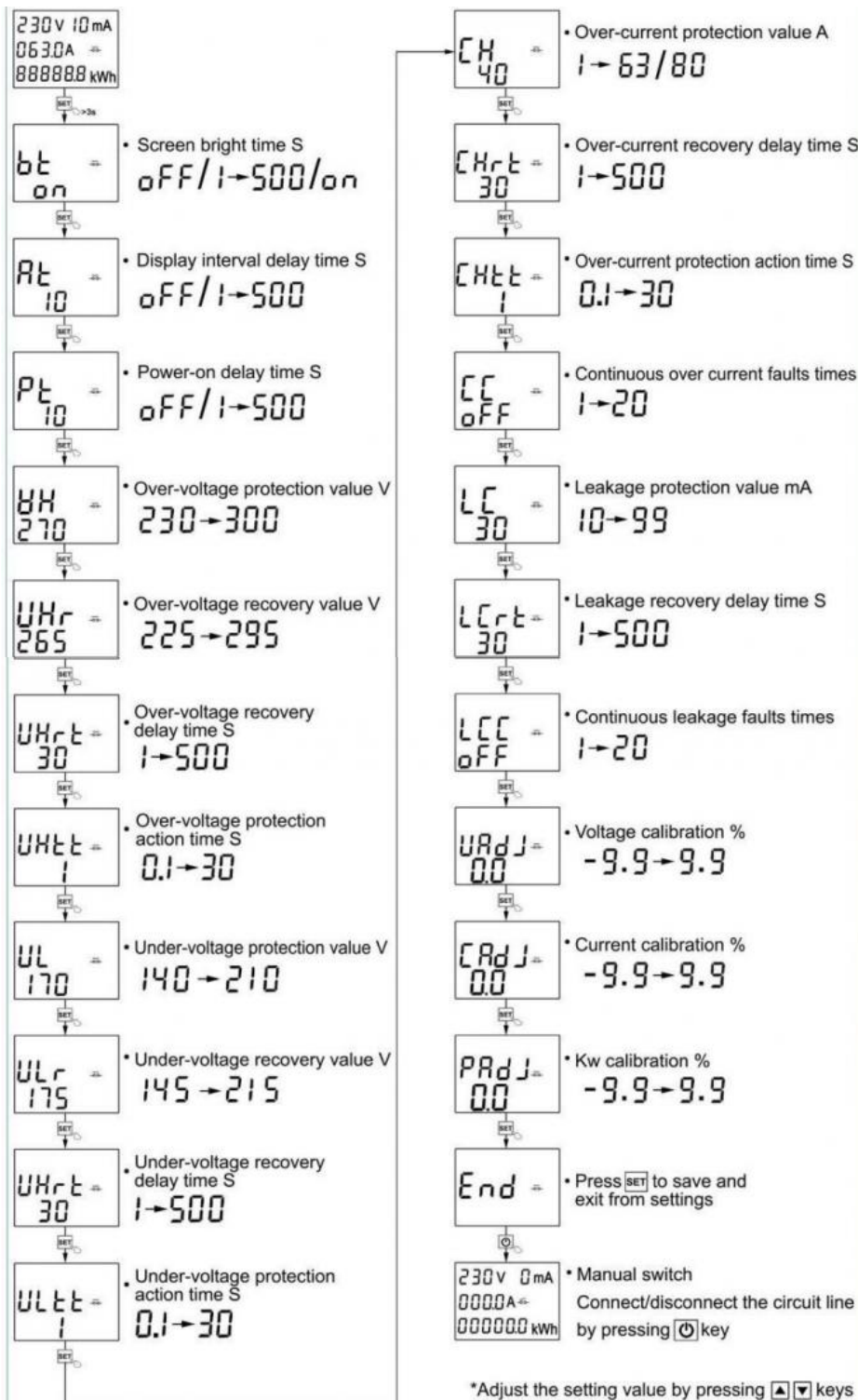


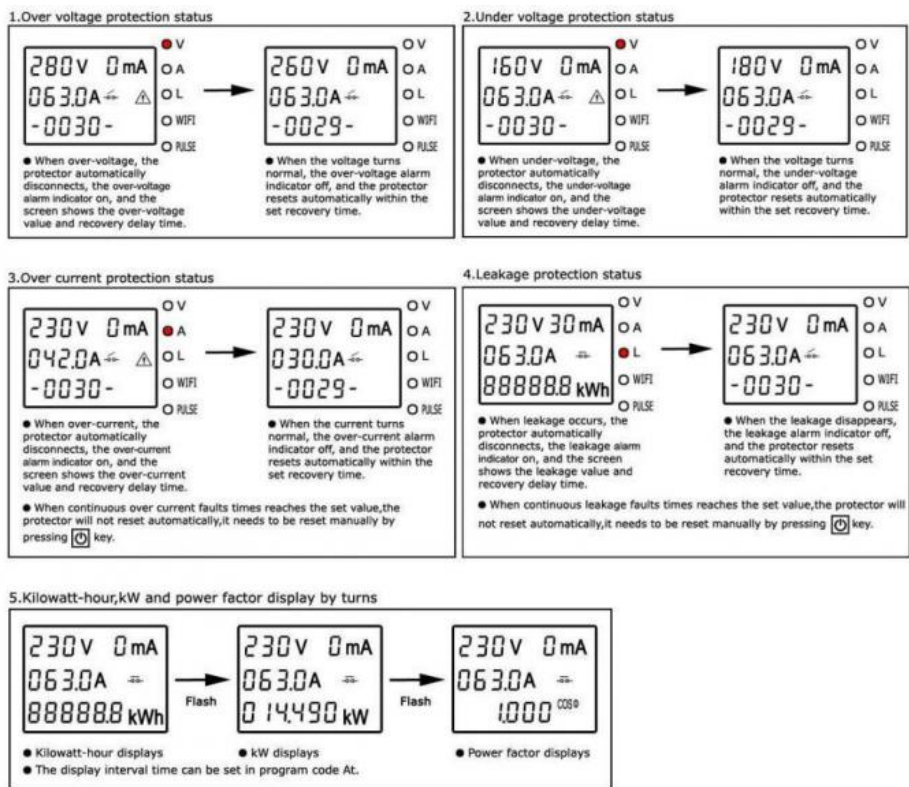


Functions

- *Over-voltage protection
- *Under-voltage protection
- *Automatic recovery

Function	Technical Parameter	Function	Technical Parameter
Input voltage	AC 140-300V	Power-on/display interval delay time	1-500s default 10s
Over-voltage protection value	230-300V default 270V	Over-voltage recovery value	225-295V default 265V
Under-voltage protection value	140-210V default 170V	Under-voltage recovery value	145-215V default 175V
Over-current protection value	63A:1-63A default 40A	Over-current recovery value	0.5-62.5A
	80A:1-80A default 60A		0.5-79.5A
Leakage protection value	10-99mA default 30mA	Continuous over current /leakage faults times	1-20 times default OFF
Recovery delay time	1-500s default 30s	Action time	0.1-30s default 1s
Voltage/current/kW calibration	-9.9-9.9%	Power consumption	≅ 2W
Electrical and mechanical life	≥100000cycles	Boundary dimension	95×45×68MM





Provide you with many options



FQA

Q1: Are you a factory or trading company

A1: We are a factory, we can guarantee our price is first-hand, very cheap and competitive.

Q2: How does your factory do regarding quality control?

A2: All the products will be 100% checked before the shipment

Q3: When can I get the price?

A3: Usually we quote within 24 hours after we get your inquiry.

Q4: How could I get a sample?

A4: if you can not buy our product in your local area, we will ship a sample to you. You will be charged a sample price plus all related shipping costs. Express delivery charge depends on the quantity of the samples.

Q5: What is the price of shipping?

A5: Depending upon the port of delivery, prices vary.

Any more query please contact with us, thank you!



Guangzhou Golden Electric Co., Ltd.



008618998498109



eva@china-golden.com.cn



chinagoldene.com

Building 4, Self-edited Building, No. 728, Kaichuang Avenue, Yunpu Industrial Zone, Huangpu District,
Guangzhou city, Guangdong province, China