



Nh00-Nh4 Gg 500V-120ka TUV CE CB RoHS Dual Indicator Fuse Link and Nt00 Double Indicator SMC

Our Product Introduction

Basic Information

- Place of Origin: China
- Brand Name: Golden Electric /OEM
- Certification: ISO 9001, ISO 9000, ISO 14001, ISO 14000, ISO 20000, OHSAS/ OHSMS 18001, IATF16949
- Minimum Order Quantity: 1
- Packaging Details: Carton/Pallet
- Delivery Time: Peak Season Lead Time: more than 12 months Off Season Lead Time: within 15 workdays
- Payment Terms: LC, T/T, PayPal, Western Union
- Supply Ability: 5000/Month



Product Specification

- Form Of Installation: Insurance Piece Holder
- Environmental Protection: Environmental Protection Fuse Holder
- Execution Standard: National Standard
- Fusing Speed: F
- Brand: Industrial
- Rated Current: 80-400A
- Rated Voltage: 500~690V
- Standard: High Quality CE&TUV Certificate
- Sample: Available
- Installation Altitude: ≤2000m
- Finish: Chrome-Plated
- Application: Solar PV System
- Transport Package: Export Standard Packing
- Specification: According To Customer Demand
- Trademark: Golden Or Netural Or Customer Brand



More Images



for more products please visit us on chinagoldene.com

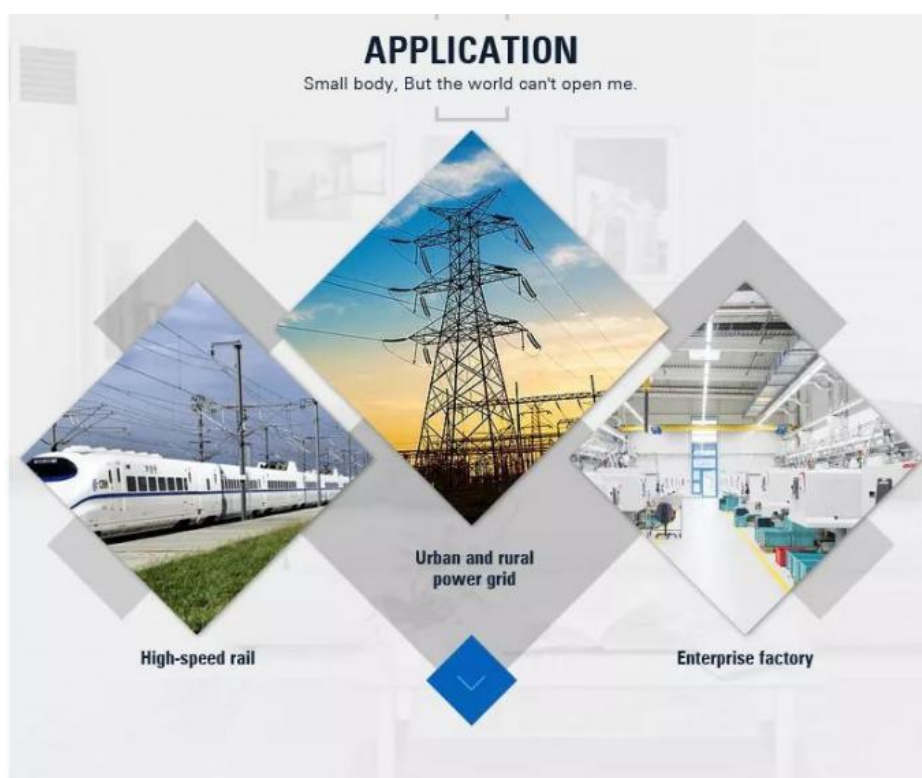
Product Description

Product Description

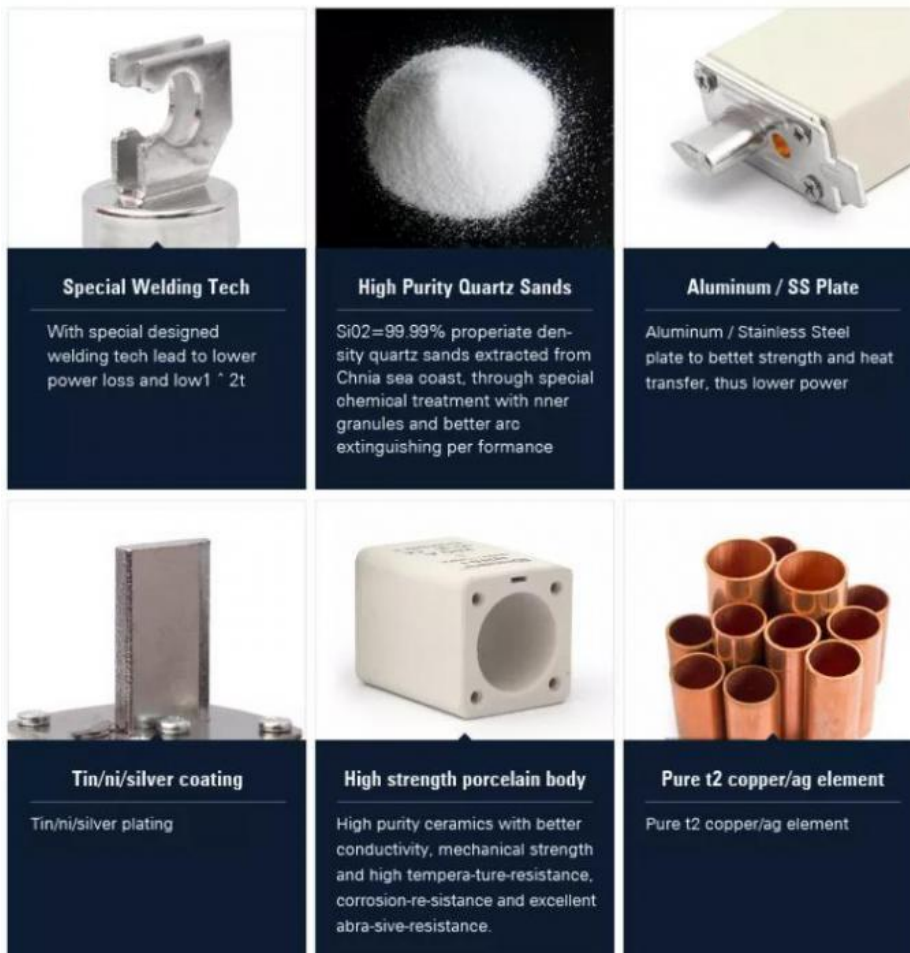


For NT and NH fuse links

1. According to IEC60269, DIN43620, GB13539 and CE Safety, ROHS certificate.
2. Rated voltage: AC500V/AC690V or for semiconductor-protecting-insert-part AC1000V



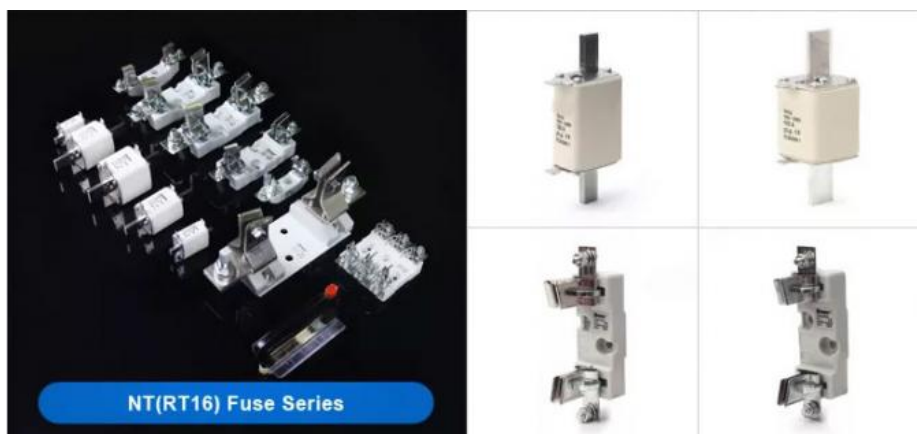
Product Introduction(Selected materials)



Product Parameters

Item	Value
Brand Name	Golden Electric
Model Number	NH Series FUSE LINK
Usage	LOW VOLTAGE
Breaking Capacity	High
Safety Standards	IEC
Rated current	80A-400A
Rated voltage	500~690V
Material	Brass, Porcelain
Certificate	CE ISO9001

Related Products





Packaging & Shipping

DC Solar Fuse Package:

Standard export carton packing.

DC Solar Fuse Delivery Time:

3-15 days after confirming order, detail delivery date should be decided according to production season and order quantity.

DC Solar Fuse Shipping:

1. By Air or by Sea for batch goods,Airport/ Port receiving;
2. Customers specifying freight forwarders or negotiable shipping methods!



Company Profile

- **Golden Electric Co.,Ltd** ,was foundad in 2017, we are professional for make **AC and DC electric items such as isolator switch , fuse , breaker , distribution box , PV combiner box ,surge protector, Industrial plug and socket,Solar product and so on.**

- Golden has been granted ISO9001 management system certifications. The comprehensive product line has more than 1000 models which have been approved by TUV,CE,CQC,SGS,ROHS,SASO. The productsells well to UK, Spain, Portugal, Singapore, Turkey, Russia, Korea, South Africa... more than 60 countries and regions.

- Golden is always striving hard to provide the best services and competitive price to all customers

FAQ

Q: If I'm interested in your DC FUSE when I can receive your quotation and detail information after send the enquiry?

A:All your enquiry will be replied in 24hours.

Q:Your DC FUSE seems perfect but what's the difference between you and other suppliers? Because I find some cheaper price from others!

A: Our DC FUSE are high quality customized.for solar system I think compare the quality first and then compare the price is the best way.

Q:Can I get a sample before the order because I really don't how is your DC FUSE quality?

A:Of course!We also think sample order is the best way to build the trust.

Q:How's the delivery?Because I really need them is urgently?

A:For sample order 3~7days will be no problem.And for regular order we promise in 15days.

Q:How's the warranty period for your DC FUSE?

A:We offer one year warranty for our customer.

How to contact us

Send your Inquiry Details in the Below, please Click "Send" Now!
Good price and sample are waiting for you.



Guangzhou Golden Electric Co., Ltd.



008618998498109



eva@china-golden.com.cn



chinagoldene.com

Building 4, Self-edited Building, No. 728, Kaichuang Avenue, Yunpu Industrial Zone, Huangpu District,
Guangzhou city,Guangdong province,China