



## 1000VDC Voltage AC Cylindrical Solar PV Fuse Link 14\*51mm with IP20 Protection Degree

Our Product Introduction

### Basic Information

- Place of Origin: China
- Brand Name: Golden Electric /OEM
- Certification: ISO 9001, ISO 9000, ISO 14001, ISO 14000, ISO 20000, OHSAS/ OHSMS 18001, IATF16949
- Minimum Order Quantity: 1
- Packaging Details: Carton/Pallet
- Delivery Time: Peak Season Lead Time: more than 12 months Off Season Lead Time: within 15 workdays
- Payment Terms: LC, T/T, PayPal, Western Union
- Supply Ability: 5000/Month



### Product Specification

- Execution Standard: National Standard
- Brand: Golden Or Natural Or Customer Brand
- Model No.: Gstp-25
- Standard: High Quality CE&TUV Certificate
- Current: 1A,2A,3A,4A,5A,6A,8A,10A,12A,15A,20A,25A
- Voltage: 1000VDC
- Giggest Block Ability(Ka): 33ka
- Working Temperature: "-5°to +40°
- Installation Altitude: ≤2000m
- Protection Degree: IP20
- Dimension: 14\*51mm
- Transport Package: Standard Export Box Package Carton Size 420/240/33
- Specification: Different Sizes And Specifications
- Trademark: Golden Electric Or Customize



### More Images



for more products please visit us on [chinagoldene.com](http://chinagoldene.com)

## Product Description

### Product Description

The 14X51mm ferrule fuses are commonly used in electrical distribution circuits and various industrial applications. There are gG, aM, aR and other types of this size fuse. gG class fuses are intended for general purpose protection, mainly conductor protection. aM class fuses are intended for short circuit protection of motor circuits. aR class fuse are intended for semiconductor protection.



### QUALITY ASSURANCE

Fuse filament Pure T2 Copper Element  
Double Copper Cap  
Silver Coating  
High Strength Porcelain Body  
High Purity Quartz Sands

### Product Parameters

Model Number	14x51 fuse
Basic fuse size	14x51mm
Ratings	
Voltage	500V/690V
Current	Up to 63A
Breaking Capacity	Up to 100kA
Operating class	gG/aM/aR

### Features & Benefits

Reduced size  
Safest and most reliable protection system  
Visual indication of fuse operation

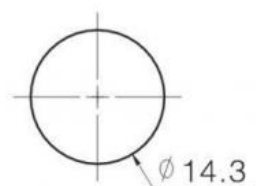
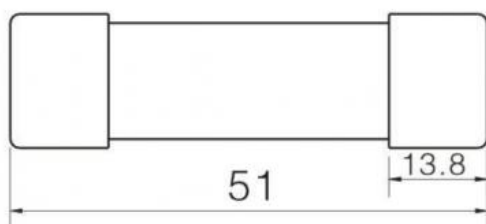
### Application

General cables  
Motors protection  
Semiconductor protection

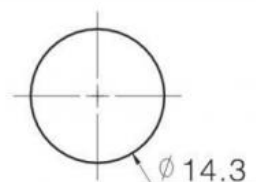
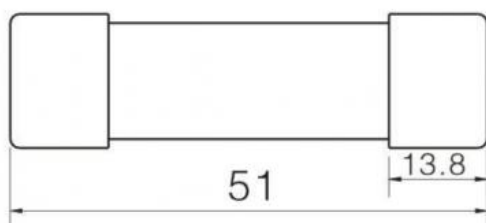
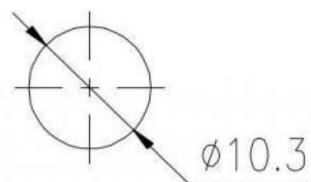
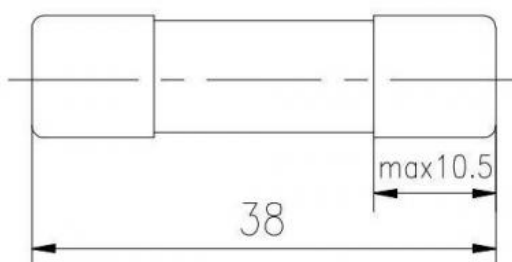
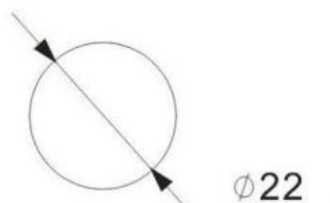
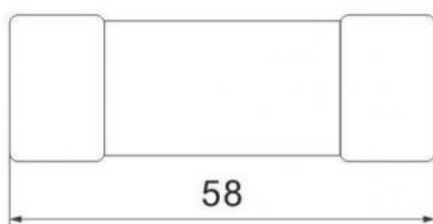
### Value service

Good After Sale Customer Service Quick & Professional Response  
Short Production Cycle On Time Delivery

## Drawings



## Other model drawings



## Other Hot-Selling Products



## Company Profile

- Golden Electric Co.,Ltd ,was foundad in 2007, we are professional for make AC and DC electric items such as cable gland, isolator switch , fuse and fuse holder, Circuit breaker , distribution box , PV combiner box ,surge protector, Timer Switch,Industrial plug and socket,Wind Turbine, Solar product, busbar clamp and so on.

- Golden has been granted ISO9001 management system certifications. The comprehensive product line has more than 1000 models which have been approved by TUV,CE,CQC,SGS,ROHS,SASO. The productsells well to UK, Spain, Portugal, Singapore, Turkey, Russia, Korea, South Africa... more than 60 countries and regions.

- Golden is always striving hard to provide the best services and competitive price to all customers.

## FAQ

### 1)Q:How can i trust your company?

A:Golden electric is The top 10 manufacture in China - more than 350 Agents in local market and more than 100 foreign clients make OEM,ODM order from us,Golden electric is a big company, we have cooperation with LS, EKF the world-class companies. Our company over 100 employees, products pass CE,IEC,TUV,SAA, RCM, ROHS certificates.

### 2) Q:Your products?

A: Golden electric is factory for Circuit Breaker,Automatic transfer switch,Surge protector device,distribution box Enclosure, inverter, DC fuse, busbar clamp etc. Providing customers very competitive sources, and can be your sourcing agent in China. Goods are following international standards, IE, CE, ISO9001 ,SGS etc.

### 3) Q: Do you have forwarder?

A: Yes, we have good forwarder cooperated over 10 years, they help us import and export . For small package orders, suggest to use by Express.

### 4) Q: Your address ?

A: Locates in Guangzhou province, China,welcome to visit us

### 5) Q:What's the Fuse, Fuse holder guarantee?

A: 2 years warranty. If customer's problem, then customer burden. If our problem, then we send new goods to customer to replace asap.

### 6) Q:What's about MOQ? Delivery time ?

A: 1pcs for Fuse holder.

### 7) Q: What's the payment term?

A: Normally 100% T/T in advanced payment. If big order then about 50% advanced payment, balance before shipment.PAYPAL,WESTERN UNION,CASH for small order .

### 8) Q:What's your contact information ?

**Send us your inquiry !we will reply you in 24 hours !**



**Guangzhou Golden Electric Co., Ltd.**



008618998498109



eva@china-golden.com.cn



chinagoldene.com

Building 4, Self-edited Building, No. 728, Kaichuang Avenue, Yunpu Industrial Zone, Huangpu District,  
Guangzhou city,Guangdong province,China