



## 6way 125A Plug-in Type Main Distribution Board with Metal Box Thickness 0.9mm to 1.5mm

Our Product Introduction

### Basic Information

- Place of Origin: China
- Brand Name: Golden Electric /OEM
- Certification: ISO 9001, ISO 9000, ISO 14001, ISO 14000, ISO 20000, OHSAS/ OHSMS 18001, IATF16949
- Minimum Order Quantity: 1
- Packaging Details: Carton/Pallet
- Delivery Time: Peak Season Lead Time: more than 12 months  
Off Season Lead Time: within 15 workdays
- Payment Terms: LC, T/T, PayPal, Western Union
- Supply Ability: 5000/Month

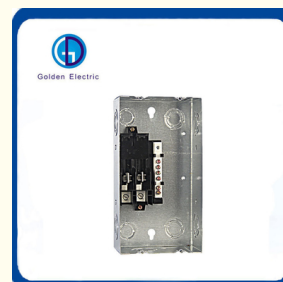


### Product Specification

- Shell Material: Steel Plate
- Shell Protection Grade: IP56
- Brand: Golden Electric /OEM
- Rated Voltage: 120/240VAC
- Waterproof Level: NEMA 3r
- Installation Method: Flush/Surface/Combination
- Rated Current: 225
- Metal Box Thickness: 0.9mm To 1.5mm
- Product Name: Load Center
- Application: Plug In Circuit Breaker
- Accept Breaker: Thql Or Square D Plug In Breaker
- Busbar Material: Aluminum With Tin Plating
- Suitable For: Single Phase, 3 Wire
- Transport Package: Standard Export Carton
- Trademark: Golden Or Natural, Or Customer Brand



### More Images



for more products please visit us on [chinagoldene.com](http://chinagoldene.com)

## Product Description

### Product Description

### Application

GD Series Load Centers have been designed for safe, reliable distribution and control of electrical power as service entrance equipment in residential, commercial and light industrial premises. They are available in plug-in designs for indoor applications.

### Features

Made out of high quality electro-galvanized steel sheet of up to 0.9-1.5mm thickness  
 Matt-finish polyester power coated paint  
 Knockouts provided on all sides of the enclosure  
 Accept GE's Q line circuit breakers, including GE's exclusive 1/2" THQPs  
 Suitable for single-phase, three-wire, 120/240VAC, rated current to 225A  
 Convertible to main breaker  
 Wider enclosure offers ease of wiring and move heat dissipation  
 Flush and Surface mounted designs  
 Knockouts for cable entry are provided on top, bottom of the enclosure

### Product Parameters

Model	Front Type	Main Ampere Rating	1" Spaces		1/2" Spaces		Total 1-pole Spaces
			1 Pole	2 Pole	1 Pole	2 Pole	
GDL240S	Surface	40A	2	1	4	1	4
GDL412C	Combination	125A	4	2	8	3	8
GDL612F	Flush	125A	6	3	12	4	12
GDL612FD	Flush	125A	6	3	12	4	12
GDLM612FM	Flush	125A	6	3	12	4	12
GDL512S	Surface	125A	6	3	12	4	12
GDL612SD	Surface	125A	6	3	12	4	12
GDLM612SM	Surface	125A	6	3	12	4	12
GDL812F	Flush	125A	8	4	16	8	16
GDL812FD	Flush	125A	8	4	16	8	16
GDLM812FM	Flush	125A	8	4	16	8	16
GDL812S	Surface	125A	8	4	16	8	16
GDL812SD	Surface	125A	8	4	16	8	16
GDLM812SM	Surface	125A	8	4	16	8	16
GDLM1212C	Combination	125A	12	6	24	10	24
GDLM1212CM	Combination	125A	12	6	24	10	24

### Product Details

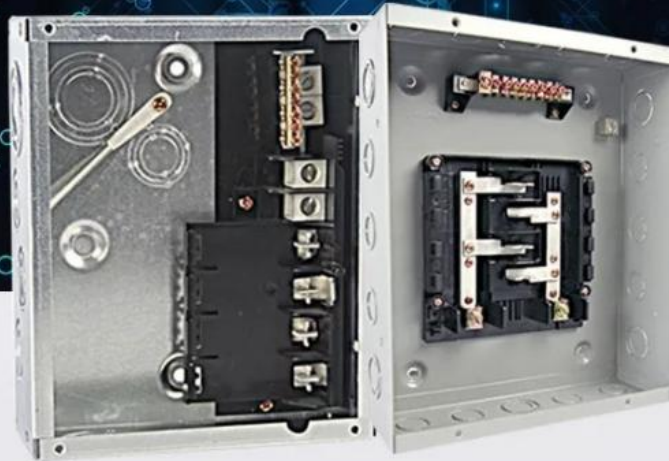
# LOAD CENTER

PROFESSIONAL MANUFACTURE

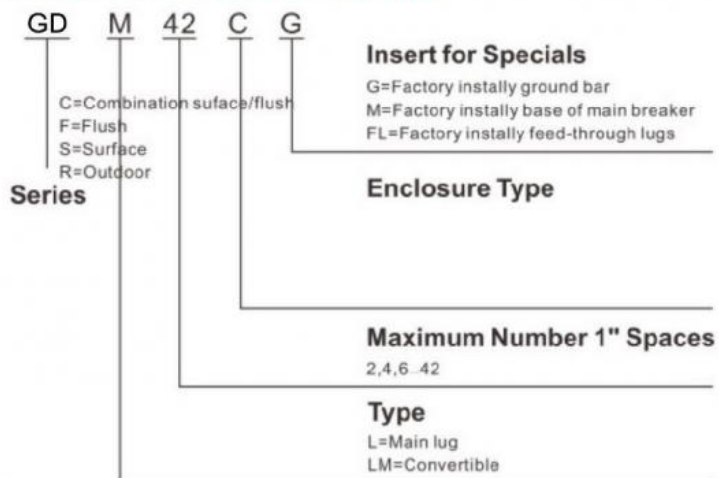
Durable quality

Free samples

Best service



## Product Number Guide



Recommand Product



#### Company Profile

- Golden Electric Co.,Ltd ,was foundad in 2007, we are professional for make **AC and DC electric items** such as cable gland,MC4 Connector, isolator switch , fuse , breaker , distribution box , PV combiner box ,surge protector, Indicator lamp,Solar Charge Controller,Industrial plug and socket,Meter Socket,Load Center, Wind Turbine, Solar product and so on.

- Golden has been granted ISO9001 management system certifications. The comprehensive product line has more than 1000 models which have been approved by TUV,CE,CQC,SGS,ROHS,SASO. The productsells well to UK, Spain, Portugal, Singapore, Turkey, Russia, Korea, South Africa... more than 60 countries and regions.

- Golden is always striving hard to provide the best services and competitive price to all customers.

#### FAQ

##### 1)Q:How can i trust your company?

A:Golden electric is The top 10 manufacture in China - more than 350 Agents in local market and more than 100 foreign clients make OEM,ODM order from us,Golden electric is a big company, we have cooperation with LS, EKF the world-class companies. Our company over 100 employees, products pass CE,IEC,TUV,SAA, RCM, ROHS certificates.

##### 2) Q:Your products?

A: Golden electric is factory for Automatic transfer swithc,Surge protector device,distribution box Enclosure, inverter, DC fuse etc. Providing customers very competitive sources, and can be your sourcing agent in China. Goods are following international standards, IE, CE, ISO9001 ,SGS etc.

##### 3) Q: Do you have forwarder?

A: Yes, we have good forwarder cooperated over 10 years, they help us import and export . For small package orders, suggest to use by Express.

##### 4) Q: Your address ?

A: Locates in Guangzhou province, China,welcome to visit us

##### 5) Q:What's the Load Center guarantee?

A: 2 years warranty. If customer's problem, then customer burden. If our problem, then we send new goods to customer to replace asap.

##### 6) Q:What's about MOQ? Delivery time ?

A: 1pcs for Load Centers.

##### 7) Q: What's the payment term?

A: Normally 100% T/T in advanced payment. If big order then about 50% advanced payment, balance before shipment.PAYPAL,WESTERN UNION,CASH for small order .

##### 8) Q:What's your contact information ?

**Send us your inquiry !we will reply you in 24 hours !**



**Guangzhou Golden Electric Co., Ltd.**



008618998498109



eva@china-golden.com.cn



chinagoldene.com

Building 4, Self-edited Building, No. 728, Kaichuang Avenue, Yunpu Industrial Zone, Huangpu District,  
Guangzhou city,Guangdong province,China