



## 10A 250VAC Switching Capacity Thermostat for Chassis and Cabinet at Affordable Cost

Our Product Introduction

### Basic Information

- Place of Origin: China
- Brand Name: Golden Electric /OEM
- Certification: ISO 9001, ISO 9000, ISO 14001, ISO 14000, ISO 20000, OHSAS/ OHSMS 18001, IATF16949
- Minimum Order Quantity: 1
- Packaging Details: Carton/Pallet
- Delivery Time: Peak Season Lead Time: more than 12 months Off Season Lead Time: within 15 workdays
- Payment Terms: LC, T/T, PayPal, Western Union
- Supply Ability: 5000/Month



### Product Specification

- Environment Humidity: 5%-85%Rh
- Installation Method: Rail Installation
- Operating Voltage: AC/DC 24V-250V
- Output Signal: 10mA
- Dimensions: 60\*33\*43mm
- Control Type: Temperature
- Weight: 0.08kg
- Hole Size: 35mm
- Transport Package: Standard Export Carton
- Specification: GD-TC601/GD-TC602
- Trademark: Golden Or Natural Or Customer Brand
- Origin: China
- HS Code: 90321000
- Supply Ability: 50000PCS /Week
- Customized: Non-Customized



### More Images



for more products please visit us on [chinagoldene.com](http://chinagoldene.com)

## Product Description

### Product Description

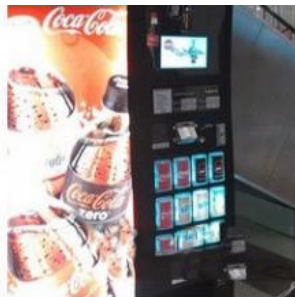
#### GDTC-602&GDTC-601



GDTC-601: Thermostat (normally closed); contact breaker for regulating heaters. The contact opens when temperature is rising.

GDTC-602: Thermostat (normally open); contact maker for regulating of filter fans and heat exchangers or for switching signal devises when temperature limit has been exceeded. The contact closes when temperature is rising.

#### Application



#### Hot Product

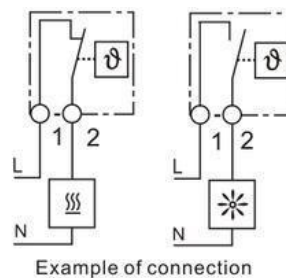
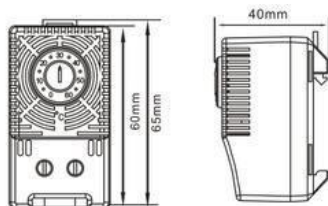


## Product Parameters

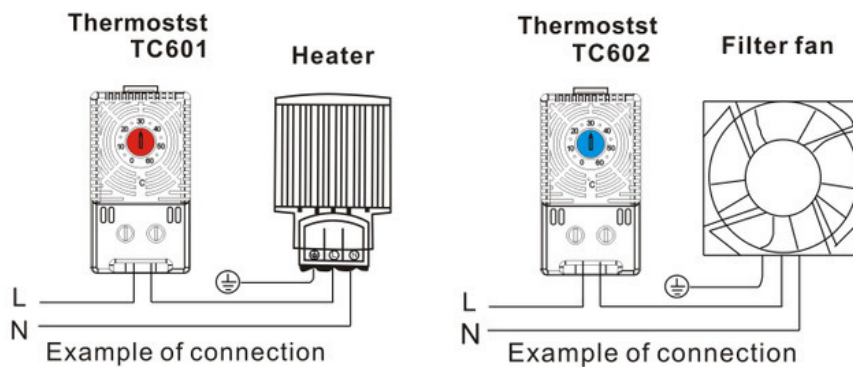
### GDTC-602&GDTC-601

<b>Switch temperature difference</b>	+/-5°C
<b>Sensor element</b>	thermostatic bimetal
<b>Contact type</b>	snap-action contact
<b>Service life</b>	>100,000 cycles
<b>Max. switching capacity</b>	250VAC, 10 (2) A / 120VAC, 15 (2) A DC (30/110/220)V (1/0.3/0.15)A
<b>Max. inrush current</b>	AC 16A for 10 sec.
<b>Connection</b>	2-pole terminal, clamping torque 0.5Nm max.: rigid wire 2.5mm <sup>2</sup> (AWG 14) stranded wire <sup>1</sup> 1.5mm <sup>2</sup> (AWG 16)
<b>Mounting</b>	clip for 35mm DIN rail
<b>Casing</b>	plastic according to UL94 V-0, light grey
<b>Dimensions</b>	84*43.5*17.5mm
<b>Weight</b>	0.02(Kg)
<b>Fitting positon</b>	variable
<b>Operating/Storage humidity</b>	-45 to +80°C (-49 to +176°F)
<b>Operating/Storage humidity</b>	max. 90% RH

### Product Size



### Product wiring diagram



## Order code:

Setting range	Ordering code Normally closed (NC) GDTC-601	Ordering code Normally open (NO) GDTC-602
0 to +60°C	6010	6020
-20 to +40°C	6011	6021
-10 to +50°C	6012	6022
+20 to +80°C	6013	6023
+14 to +122°F	6014	6024
+32 to +140°F	6015	6025
-15 to +45°C	6016	6026

## Packaging & Shipping

### Packaging Details:

Standard Export Package

### Shipping:

1. By Air or by Sea for batch goods,Airport/ Port receiving;
2. Customers specifying freight forwarders or negotiable shipping methods!

### Delivery Detail:

Shipped in 7 days after payment



## Company Profile

- Golden Electric Co.,Ltd ,was foundad in 2017, we are professional for make AC and DC electric items such as **isolator switch** , **fuse** , **breaker** , **distribution box** , **PV combiner box** ,**surge protector**, **Industrial plug and socket**,**Solar product** and so on.

- Golden has been granted ISO9001 management system certifications. The comprehensive product line has more than 1000 models which have been approved by TUV,CE,CQC,SGS,ROHS,SASO. The productsells well to UK, Spain, Portugal, Singapore, Turkey, Russia, Korea, South Africa... more than 60 countries and regions.

- Golden is always striving hard to provide the best services and competitive price to all customers.







## FAQ

### Q:How and how long can I get a sample to check your quality?

A: After price confirmation, you can require for samples to check our quality. Then after you send us confirmed files, the samples will be ready for delivery in 7 days. The samples will be sent to you via express and arrive in 5-7 workdays.

### Q:How to order our product ?

A: 1).Please tell us the model and quantity and other request you need.  
2).We make the PI for you.  
3).After you confirm the PI, we arrange the order for you after receiving your payment.  
4).After the goods finished, we send the goods out to you and tell you the tracking number.  
5).We will track your goods until you receive the goods.

### Q: Can I have a visit to your factory before the order?

A: Welcome! Our factory address: Dongan Industrial Zone,Yueqing City, Wenzhou, Zhejiang, China (Mainland)

### Q: What's your shipment method?

A: We ship by Express, by air, by sea, by train. Normally we checked and compare, then provide customer the most proper shipment method.

### Q: What's about MOQ?

A: First order MOQ=1pcs

### Q: If i want to release order, what's the payment method you accept ?

A: We accept T/T, Paypal, Western union, etc.

### Q: If i want to release order, what's the process?

A: Thanks. You can send inquiry to us by alibaba, or send us by email, we will reply within 24hrs.

## Our commitent

**BETTER PRICE** than other sellers for you because of **Factory Direct Sale**.  
**BETTER QUALITY** than before caused by our **10+ years trading experience**.  
**STOCK IN TRADE** always own to our **Fast & Professional production line**.  
**FAST DELIVERY** always made by our **GROUP's Enthusiam**.  
**TIMING REPLY** in **24 hours** all about our **TEAM's Passion & Patience**.  
Send your Inquiry Details in the Below, **Click "Send" Now~**  
**YOUR BENEFITS IS OUR BUSINESS!!!**



**Guangzhou Golden Electric Co., Ltd.**



008618998498109



eva@china-golden.com.cn



chinagoldene.com

Building 4, Self-edited Building, No. 728, Kaichuang Avenue, Yunpu Industrial Zone, Huangpu District,  
Guangzhou city,Guangdong province,China

