



Three Phase 1000V 1500V 250A 320A 400A 630A 800A MCCB with 50/60Hz Rated Frequency

Our Product Introduction

Basic Information

- Place of Origin: China
- Brand Name: Golden Electric /OEM
- Certification: ISO 9001, ISO 9000, ISO 14001, ISO 14000, ISO 20000, OHSAS/ OHSMS 18001, IATF16949
- Minimum Order Quantity: 1
- Packaging Details: Carton/Pallet
- Delivery Time: Peak Season Lead Time: more than 12 months Off Season Lead Time: within 15 workdays
- Payment Terms: LC, T/T, PayPal, Western Union
- Supply Ability: 5000/Month



Product Specification

- Poles Number: 3
- Type: Circuit Breaker
- Function: Conventional Circuit Breaker, Circuit-Breaker Failure Protection, Overcurrent Protection, OVP(Overvoltage Protection)
- Product Name: DC Moulded Case Circuit Breaker MCCB
- High Breaking Capacity: 20ka
- Protection Level: IP20
- Rated Insulation Voltage $U_i(V)$: 1000V, 1500V
- Rated Working Voltage (U_e): 1000V, 1250V, 1500V
- Current (Optional): 250A-800A
- Rated Frequency (Hz): 50/60Hz
- Electrical Life: 2000times
- Transport Package: Standard Export Carton
- Specification: 2P/3P/4P



More Images



for more products please visit us on chinagoldene.com

Product Description

Product Description

Through many years of dedicated research on the actual system operation situation and customer needs of new energy at home and abroad, has developed the SRM3 (DC) - (HU) series of AC and DC Molded Circuit Breaker for New Energy.

Product Characteristic

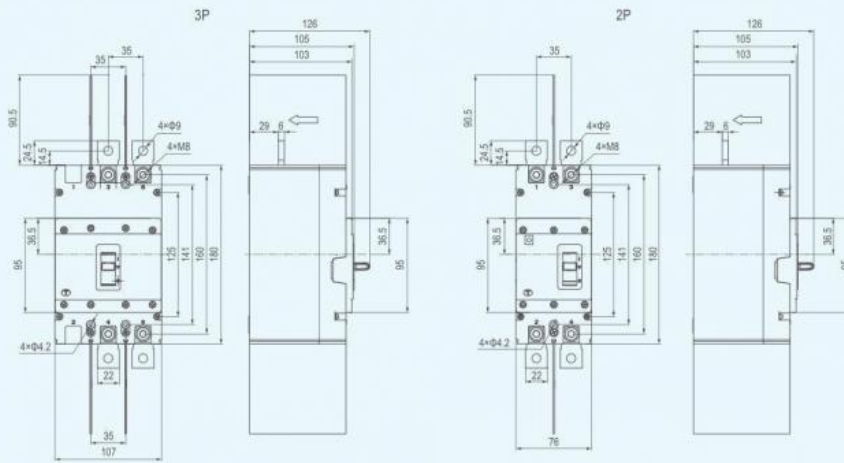
- for SRM3-(HU) series Molded Circuit Breaker, The maximum rated voltage is AC 1000V, and the maximum current is 400A.
- for SRM3-(HU) series Molded Circuit Breaker, in the voltage of AC 800V, the maximum breaking capacity is 30kA, which can ensure reliable short-circuit protection of the system.
- for SRM3DC-(HU) series Molded Circuit Breaker, The maximum rated voltage is AC 1500V, and the maximum current is 400A.
- for SRM3DC-(HU) series Molded Circuit Breaker, in the voltage of DC 1500V, the maximum breaking capacity is 10kA, which can ensure reliable short-circuit protection of the system.

Product Parameters

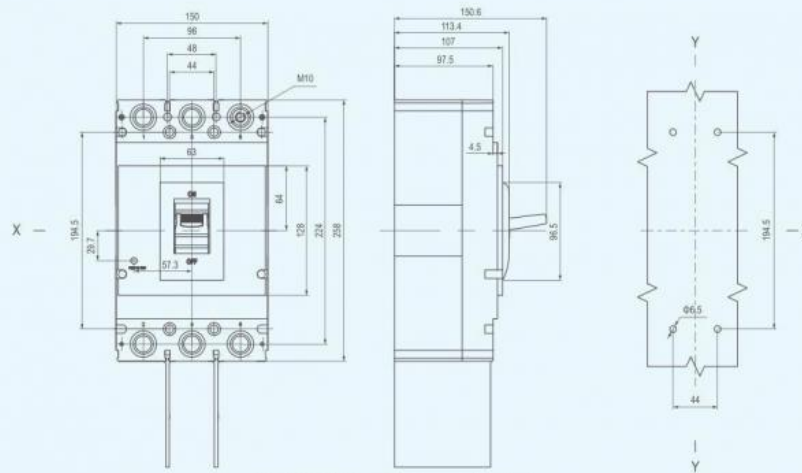
Model	SRM3DC-250HU			SRM3DC-320HU			SRM3DC-400HU			SRM3DC-630HU			SRM3DC-800HU		
Rated current of shell frame grade Inm(A)	250A			320A			400A			630A			800A		
Rated current In(A)	125,140,160,180,200,225,250			280,315,300			315,350,400			400,500,630			630,700,800		
Rated Number	2	3	3	2	3	3	4			4			4		
Rated working voltage Ue(V)AC	1000	1250	1500	1000	1250	1500	1000	1250	1500	1000	1250	1500	1000	1250	1500
Rated insulation voltage Ui(V)	1000	1500	1500	1000	1500	1500	1500			1500			1500		
Rated impluse withstand voltage Uimp(kV)	12														
Extreme short-circuit breaking capacity Icu(kA)	20														
Running short-circuit breaking capacity Ics(kA)	20														
Wiring mode	Up incoming and down outcoming														
Mechanical life(Total times)	10000														
Electrical life(Total times)	2000														
Total breaking time(ms)	20														
Insolation feature	yes														
Standard	IEC 60947-2,GB/T 14048.2														
Allowable ambient temperature	-40~+70℃														
Levels of protection	IP20														
Quality certificate	CCC,CE,CB,TUV certificate														
With accessories	Auxiliary, alarm, off load, Hand operation, Electric operation														
Arcing distance (mm)	≥50 (Zero arc, with arcing cover)														
Transient Action value	10In														
Overall dimensions L×W×H(mm)	180×76×126(2P)/180×107×126(3P)						258×200×107			280×280×115.5			280×280×115.5		
Installation way	fixed type, plug-in type														

Product Details

SRM3DC-250/320HU outline and installation of hole opening dimensions

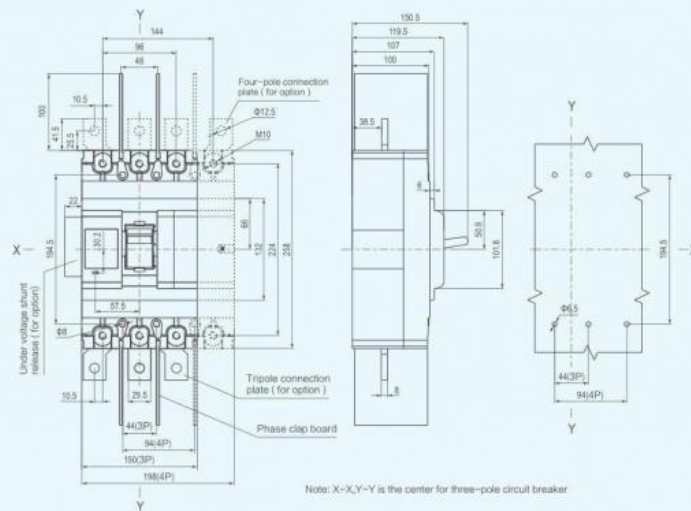


SRM3DC- 400HU outline and installation of hole opening dimensions



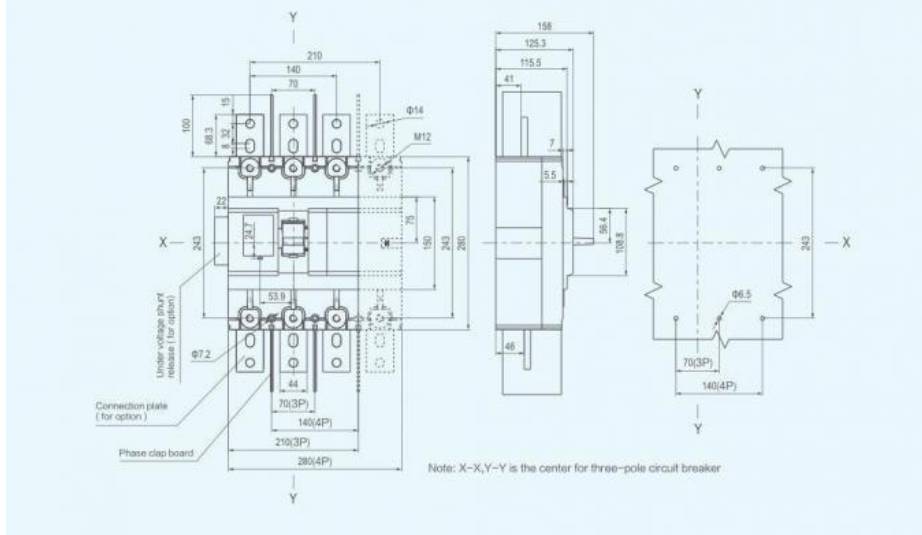
Note: X-X, Y-Y is the center for three-pole circuit breaker

SRM3(DC)-400 outline and installation of hole opening dimensions (except SRM3-400HU)



Note: X-X, Y-Y is the center for three-pole circuit breaker

SRM3(DC)-630/800(HU) outline and installation of hole opening dimensions



Recommend Product



Company Profile

- Golden Electric Co.,Ltd ,was foundad in 2007, we are professional for make AC and DC electric items such as cable gland,DC MCCB,MC4 Connector, isolator switch , fuse , breaker , distribution box , PV combiner box ,surge protector, Indicator lamp,Solar Charge Controller,Industrial plug and socket,Meter Socket,Wind Turbine, Terminal Block,Solar product and so on.

- Golden has been granted ISO9001 management system certifications. The comprehensive product line has more than 1000 models which have been approved by TUV,CE,CQC,SGS,ROHS,SASO. The productsells well to UK, Spain, Portugal, Singapore, Turkey, Russia, Korea, South Africa... more than 60 countries and regions.

- Golden is always striving hard to provide the best services and competitive price to all customers.

FAQ

1)Q:How can i trust your company?

A:Golden electric is The top 10 manufacture in China - more than 350 Agents in local market and more than 100 foreign clients make OEM,ODM order from us,Golden electric is a big company, we have cooperation with LS, EKF the world-class companies. Our company over 100 employees, products pass CE,IEC,TUV,SAA, RCM, ROHS certificates.

2) Q:Your products?

A: Golden electric is factory for Circuit Breaker,Automatic transfer switch,Surge protector device,distribution box Enclosure, inverter, DC fuse etc. Providing customers very competitive sources, and can be your sourcing agent in China. Goods are following international standards, IE, CE, ISO9001 ,SGS etc.

3) Q: Do you have forwarder?

A: Yes, we have good forwarder cooperated over 10 years, they help us import and export . For small package orders, suggest to use by Express.

4) Q: Your address ?

A: Locates in Guangzhou province, China,welcome to visit us

5) Q:What's the Moulded Case Circuit Breaker(MCCB) guarantee?

A: 2 years warranty. If customer's problem, then customer burden. If our problem, then we send new goods to customer to replace asap.

6) Q:What's about MOQ? Delivery time ?

A: 1pcs for Circuit Breaker. Normally less than 100PCS with stock, quick support.

7) Q: What's the payment term?

A: Normally 100% T/T in advanced payment. If big order then about 50% advanced payment, balance before shipment.PAYPAL,WESTERN UNION,CASH for small order .

8) Q:What's your contact information ?

Send us your inquiry !we will reply you in 24 hours !



Guangzhou Golden Electric Co., Ltd.



008618998498109



eva@china-golden.com.cn



chinagoldene.com

Building 4, Self-edited Building, No. 728, Kaichuang Avenue, Yunpu Industrial Zone, Huangpu District,
Guangzhou city,Guangdong province,China