



## Temperature Control Type Integrated Temperature Controller for Heating and Cooling

Our Product Introduction

### Basic Information

- Place of Origin: China
- Brand Name: Golden Electric /OEM
- Certification: ISO 9001, ISO 9000, ISO 14001, ISO 14000, ISO 20000, OHSAS/ OHSMS 18001, IATF16949
- Minimum Order Quantity: 1
- Packaging Details: Carton/Pallet
- Delivery Time: Peak Season Lead Time: more than 12 months Off Season Lead Time: within 15 workdays
- Payment Terms: LC, T/T, PayPal, Western Union
- Supply Ability: 5000/Month

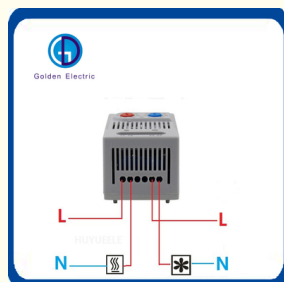


### Product Specification

- Environment Humidity: 5%-85%Rh
- Installation Method: Rail Installation
- Operating Voltage: AC/DC 24V-250V
- Output Signal: 10mA
- Dimensions: 67\*50\*46mm
- Control Type: Temperature
- Weight: 0.09kg
- Hole Size: 35mm
- Transport Package: Standard Export Carton
- Specification: GD-TC601/GD-TC602
- Trademark: Golden Or Natural Or Customer Brand
- Origin: China
- HS Code: 90321000
- Supply Ability: 50000PCS /Week
- Customized: Non-Customized



### More Images



for more products please visit us on [chinagoldene.com](http://chinagoldene.com)

## Product Description

### Product Description

#### GDR011

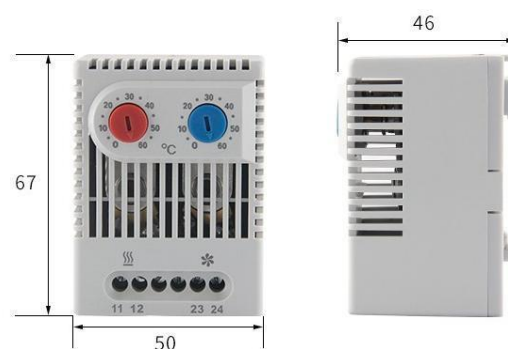


#### Two thermostats in one casing:

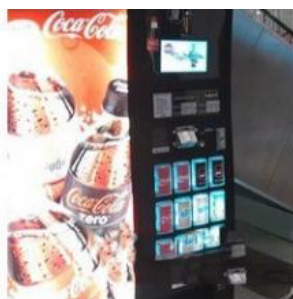
Thermostat (contact breaker, normally closed) for regulating heaters.

Thermostat (contact maker, normally open) for regulating filter fans and heat exchangers or switching signal devices when temperature limit has been exceeded. Heaters and cooling equipment can be switched independently from each other with a temperature offset as opposed to the usual change-over contacts.

1. NO and NC in one casing
2. Separate adjustable temperatures
3. High switching capacity
4. Terminals easily accessible
5. Clip fixing



## Application



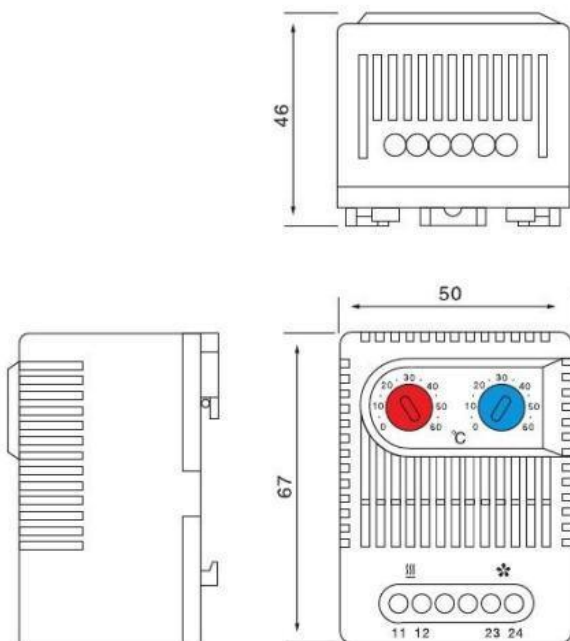
## Hot Product



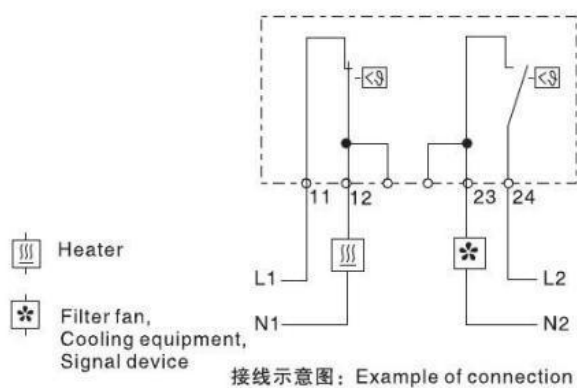
Product Parameters

Switching temperature difference 切换温差	7K(±4K tolerance) 7K(±4K公差)
Sensor element感应元件	Thermostatic bimetal恒温双金属片
Contact type接触器种类	snap-action contact突跳式接触头
Contact resistance接触电阻	<10mΩ
Service life使用寿命	>100 000 cycles >100 000周期
Max switching capacity最大切换量	250VAC, 10(2)A 120VAC, 15(2)A ADC 30W
EMC电磁兼容性	acc to EN 55014-1-2, EN 61000-3-2, EN 61000-3-3 符合欧盟EN 55014-1-2, EN 61000-3-2, EN 61000-3-3标准
Connection接线	4-pole terminal, clamping torque 0.5Nm max.: 4极接线柱, 最大夹紧扭矩0.5Nm.
Mounting安装方式	Clip for 35mm DIN rail, EN50022 35mm DIN导轨卡装(EN50022)
Casing外壳	Plastic according to UL94 V-0, light grey UI94 V-0 浅灰色塑料
Dimensions尺寸	67 × 50 × 46mm
Weight重量	Approx. 90g 大约90g
Fitting position安装方向	Variable 任意
Operating/Storage temperature 工作/储存温度	-45 to+80℃(-49 to+176°F)
Protection type保护等级	IP20

Product Size



## Product wiring diagram



## Order code:

订货代号Art.No.	设定范围Setting range	设定范围Setting range
01172.0-00	contact breaker, normally closed	0 to +60°C
01172.0-01	contact breaker, normally closed	+32to +140°F
01175.0-00	contact breaker, normally closed	-10 to +50°C
01175.0-01	contact breaker, normally closed	+14 to +122°F
01176.0-00*	contact maker, normally open	0 to +60°C
01176.0-01*	contact maker, normally open	+32to +140°F

## Packaging & Shipping

### Packaging Details:

#### Standard Export Package

### Shipping:

1. By Air or by Sea for batch goods,Airport/ Port receiving;
2. Customers specifying freight forwarders or negotiable shipping methods!

### Delivery Detail:

Shipped in 7 days after payment



## Company Profile



- Golden Electric Co.,Ltd ,was foundad in 2017, we are professional for make AC and DC electric items such as isolator switch , fuse , breaker , distribution box , PV combiner box ,surge protector, Industrial plug and socket,Solar product and so on.

- Golden has been granted ISO9001 management system certifications. The comprehensive product line has more than 1000 models which have been approved by TUV,CE,CQC,SGS,ROHS,SASO. The productsells well to UK, Spain, Portugal, Singapore, Turkey, Russia, Korea, South Africa... more than 60 countries and regions.

- Golden is always striving hard to provide the best services and competitive price to all customers.





**Low voltage product:**  
Auto/manual transfer switch  
Power meter  
Distribution box(plastic/metal)  
Surger protector device  
Mini /Moulded case circuit breaker  
Insulator

Factory direct sale

Customize

High quality

Professional after-sales service



## FAQ

### **Q:How and how long can I get a sample to check your quality?**

A: After price confirmation, you can require for samples to check our quality. Then after you send us confirmed files, the samples will be ready for delivery in 7 days. The samples will be sent to you via express and arrive in 5-7 workdays.

### **Q:How to order our product ?**

A: 1).Please tell us the model and quantity and other request you need.  
2).We make the PI for you.  
3).After you confirm the PI, we arrange the order for you after receiving your payment.  
4).After the goods finished, we send the goods out to you and tell you the tracking number.  
5).We will track your goods until you receive the goods.

### **Q: Can I have a visit to your factory before the order?**

A: Welcome! Our factory address: Dongan Industrial Zone,Yueqing City, Wenzhou, Zhejiang, China (Mainland)

### **Q: What's your shipment method?**

A: We ship by Express, by air, by sea, by train. Normally we checked and compare, then provide customer the most proper shipment method.

### **Q: What's about MOQ?**

A: First order MOQ=1pcs

### **Q: If i want to release order, what's the payment method you accept ?**

A: We accept T/T, Paypal, Western union, etc.

### **Q: If i want to release order, what's the process?**

A: Thanks. You can send inquiry to us by alibaba, or send us by email, we will reply within 24hrs.

## Our commitent

**BETTER PRICE** than other sellers for you because of Factory Direct Sale.  
**BETTER QUALITY** than before caused by our 10+ years trading experience.  
**STOCK IN TRADE** always own to our Fast & Professional production line.  
**FAST DELIVERY** always made by our GROUP's Enthusiam.  
**TIMING REPLY** in 24 hours all about our TEAM's Passion & Patience.  
Send your Inquiry Details in the Below, **Click "Send" Now~**  
**YOUR BENEFITS IS OUR BUSINESS!!!**



**Guangzhou Golden Electric Co., Ltd.**



008618998498109



eva@china-golden.com.cn



chinagoldene.com

Building 4, Self-edited Building, No. 728, Kaichuang Avenue, Yunpu Industrial Zone, Huangpu District,  
Guangzhou city,Guangdong province,China