



## Environmental Protection Tc Series Barrier PCB Terminal Block 600V with Barrier Cover

Our Product Introduction

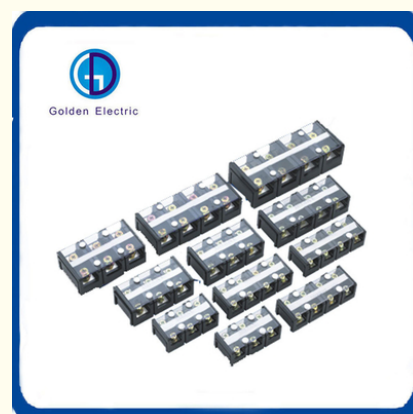
### Basic Information

- Place of Origin: China
- Brand Name: Golden Electric /OEM
- Certification: ISO 9001, ISO 9000, ISO 14001, ISO 14000, ISO 20000, OHSAS/ OHSMS 18001, IATF16949
- Minimum Order Quantity: 1
- Packaging Details: Carton/Pallet
- Delivery Time: Peak Season Lead Time: more than 12 months  
Off Season Lead Time: within 15 workdays
- Payment Terms: LC, T/T, PayPal, Western Union
- Supply Ability: 5000/Month



### Product Specification

- Model NO.: TC Series
- Production Process: Injection Molding
- Brand: Golden Electric /OEM
- Product Name: Barrier Terminal Blocks
- Rated Voltage: 600V
- Wire Range: 22-14AWG
- Rated Current: 60,100,150,200,300,400,600A
- Conductor Material: Copper
- Base Material: Bakelite
- Transparent Cover Material: As Resin
- Transport Package: Standara Export Carton
- Specification: 2P/3P/4P
- Trademark: Golden Or Netural, Or Customer Brand
- Origin: China
- HS Code: 8536909000



### More Images



for more products please visit us on [chinagoldene.com](http://chinagoldene.com)

## Product Description

### Product Description

- 1.The outer casing is made of thermosetting plastics.
- 2.Copper conductor, good electrical conductivity, nickel-plated anti-corrosion.
- 3.Dust-proof and transparent plastic protective cover for durability.

### TC Series Connectors Terminals Blocks

1.Adopting thermosetting plastics,the safety factor of high current is more reliable, structure parts adopt plate screw clamping technology, rated AC voltage is 600V, rated current of conducting strips is as following:  
60A,100A,150A,200A,300A,400A,600A, the range of wire section is from 10mm to 300mm.

2.It can be divided into 3P 4P flat screw installation according to arrangement, it will be more reliable by using together without terminations, it can be used for connecting high current of kinds of electric devices.

### Product Parameters

| Model   | N Wire Section        | Rated Current/Voltage | Insulation resistance | Base Material | Transparent cover | Conductor Material | Flame level | Screw type/torque | L/W/H(mm)     |
|---------|-----------------------|-----------------------|-----------------------|---------------|-------------------|--------------------|-------------|-------------------|---------------|
| TC-603  | 6-14mm <sup>2</sup>   | 60A/600V              | >100MΩ                | Bakelite      | AS resin          | Brass              | UL94 V0-V2  | M6 2.8-4          | 85.5/43/31.5  |
| TC-604  | 6-14mm <sup>2</sup>   | 60A/600V              | >100MΩ                | Bakelite      | AS resin          | Brass              | UL94 V0-V2  | M6 2.8-4          | 114.5/43/31.5 |
| TC-1003 | 10-22mm <sup>2</sup>  | 100A/600V             | >100MΩ                | Bakelite      | AS resin          | Brass              | UL94 V0-V2  | M6 6-8            | 102.5/55/36   |
| TC-1004 | 10-22mm <sup>2</sup>  | 100A/600V             | >100MΩ                | Bakelite      | AS resin          | Brass              | UL94 V0-V2  | M6 6-8            | 137.5/55/36.5 |
| TC-1503 | 10-50mm <sup>2</sup>  | 150A/600V             | >100MΩ                | Bakelite      | AS resin          | Brass              | UL94 V0-V2  | M8 6-12           | 115/66/39.5   |
| TC-1504 | 10-50mm <sup>2</sup>  | 150A/600V             | >100MΩ                | Bakelite      | AS resin          | Brass              | UL94 V0-V2  | M8 6-12           | 153.5/66/39.5 |
| TC-2003 | 25-70mm <sup>2</sup>  | 200A/600V             | >100MΩ                | Bakelite      | AS resin          | Brass              | UL94 V0-V2  | M8 6-12           | 132.5/72/44   |
| TC-2004 | 25-70mm <sup>2</sup>  | 200A/600V             | >100MΩ                | Bakelite      | AS resin          | Brass              | UL94 V0-V2  | M8 6-12           | 176/72/44     |
| TC-3003 | 35-150mm <sup>2</sup> | 300A/600V             | >100MΩ                | Bakelite      | AS resin          | Brass              | UL94 V0-V2  | M10 15-20         | 165/90/51.5   |
| TC-3004 | 35-150mm <sup>2</sup> | 300A/600V             | >100MΩ                | Bakelite      | AS resin          | Brass              | UL94 V0-V2  | M10 15-20         | 220/90/51.5   |
| TC-4003 | 35-185mm <sup>2</sup> | 400A/600V             | >100MΩ                | Bakelite      | AS resin          | Brass              | UL94 V0-V2  | M10 15-20         | 165/90/51.5   |
| TC-4004 | 35-185mm <sup>2</sup> | 400A/600V             | >100MΩ                | Bakelite      | AS resin          | Brass              | UL94 V0-V2  | M10 15-20         | 220/90/51.5   |
| TC-6003 | 50-300mm <sup>2</sup> | 600A/600V             | >100MΩ                | Bakelite      | AS resin          | Brass              | UL94 V0-V2  | M12 25-35         | 206/100/70    |
| TC-6004 | 50-300mm <sup>2</sup> | 600A/600V             | >100MΩ                | Bakelite      | AS resin          | Brass              | UL94 V0-V2  | M12 25-35         | 275/100/70    |

### Product Details

# TC Series



**TC-602**

导线截面/wire section: 14mm<sup>2</sup>

额定电流/电压 rated current/voltage: 60A/600V

长/宽/高/length/width/high: 58/42.5/35mm



**TC-603**

导线截面/wire section: 14mm<sup>2</sup>

额定电流/电压 rated current/voltage: 60A/600V

长/宽/高/length/width/high: 83.5/41.2/32.5mm



**TC-604**

导线截面/wire section: 14mm<sup>2</sup>

额定电流/电压 rated current/voltage: 60A/600V

长/宽/高/length/width/high: 111.2/41.2/32.5mm



**TC-605**

导线截面/wire section: 14mm<sup>2</sup>

额定电流/电压 rated current/voltage: 60A/600V

长/宽/高/length/width/high: 145/43.2/32mm



**TC-1002**

导线截面/wire section: 22mm<sup>2</sup>

额定电流/电压 rated current/voltage: 100A/600V

长/宽/高/length/width/high: 69.5/55.3/38.5mm



**TC-1003**

导线截面/wire section: 22mm<sup>2</sup>

额定电流/电压 rated current/voltage: 100A/600V

长/宽/高/length/width/high: 99.2/53.5/37.8mm



**TC-1004**

导线截面/wire section: 22mm<sup>2</sup>

额定电流/电压 rated current/voltage: 100A/600V

长/宽/高/length/width/high: 132/53.5/37.8mm



**TC-1005**

导线截面/wire section: 22mm<sup>2</sup>

额定电流/电压 rated current/voltage: 100A/600V

长/宽/高/length/width/high: 173.5/55/38mm



**TC-1503**

导线截面/wire section: 60mm<sup>2</sup>

额定电流/电压 rated current/voltage: 150A/600V

长/宽/高/length/width/high: 114.5/65.3/40.8mm



**TC-1504**

导线截面/wire section: 60mm<sup>2</sup>

额定电流/电压 rated current/voltage: 150A/600V

长/宽/高/length/width/high: 153.5/66/40.8mm



**TC-1505**

导线截面/wire section: 60mm<sup>2</sup>

额定电流/电压 rated current/voltage: 150A/600V

长/宽/高/length/width/high: 193/66/40.5mm



**TC-2003**

导线截面/wire section: 100mm<sup>2</sup>

额定电流/电压 rated current/voltage: 200A/600V

长/宽/高/length/width/high: 133/71/47.5mm



**TC-2004**

导线截面/wire section: 100mm<sup>2</sup>

额定电流/电压 rated current/voltage: 200A/600V

长/宽/高/length/width/high: 177.5/71/44mm



**TC-2005**

导线截面/wire section: 100mm<sup>2</sup>

额定电流/电压 rated current/voltage: 200A/600V

长/宽/高/length/width/high: 224/72.7/46.2mm



**TC-3003**

导线截面/wire section: 150mm<sup>2</sup>

额定电流/电压 rated current/voltage: 300A/600V

长/宽/高/length/width/high: 165/90.5/52.5mm



**TC-3004**

导线截面/wire section: 150mm<sup>2</sup>

额定电流/电压 rated current/voltage: 300A/600V

长/宽/高/length/width/high: 220/90.5/52.5mm



**TC-4003**

导线截面/wire section: 200mm<sup>2</sup>

额定电流/电压 rated current/voltage: 400A/600V

长/宽/高/length/width/high: 165/90.5/52.5mm



**TC-4004**

导线截面/wire section: 200mm<sup>2</sup>

额定电流/电压 rated current/voltage: 400A/600V

长/宽/高/length/width/high: 220/90.5/52.5mm



**TC-6003**

导线截面/wire section: 300mm<sup>2</sup>

额定电流/电压 rated current/voltage: 600A/600V

长/宽/高/length/width/high: 207/100.5/75.5mm



**TC-6004**

导线截面/wire section: 300mm<sup>2</sup>

额定电流/电压 rated current/voltage: 600A/600V

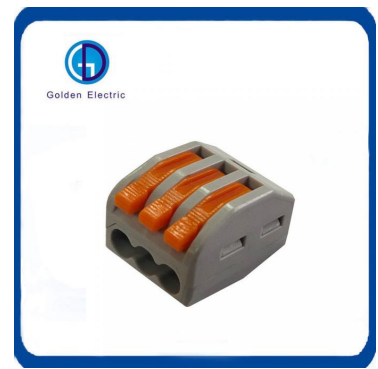
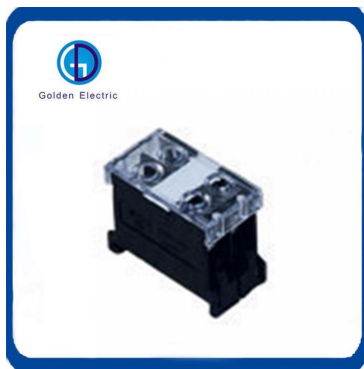
长/宽/高/length/width/high: 275/100.5/75.5mm



#### Recommend Product







#### Company Profile

- Golden Electric Co.,Ltd ,was founded in 2007, we are professional for make AC and DC electric items such as cable gland,MC4 Connector, isolator switch , fuse , breaker , distribution box , PV combiner box ,surge protector, Indicator lamp,Solar Charge Controller,Industrial plug and socket,Meter Socket,Wind Turbine, Terminal Block,Solar product and so on.
- Golden has been granted ISO9001 management system certifications. The comprehensive product line has more than 1000 models which have been approved by TUV,CE,CQC,SGS,ROHS,SASO. The productsells well to UK, Spain, Portugal, Singapore, Turkey, Russia, Korea, South Africa... more than 60 countries and regions.
- Golden is always striving hard to provide the best services and competitive price to all customers.

#### FAQ

##### 1)Q:How can i trust your company?

A:Golden electric is The top 10 manufacture in China- more than 350 Agents in local market and more than 100 foreign clients make OEM,ODM order from us,Golden electric is a big company, we have cooperation with LS, EKF the world-class companies. Our company over 100 employees, products pass CE,IEC,TUV,SAA, RCM, ROHS certificates.

##### 2) Q:Your products?

A: Golden electric is factory for Automatic transfer swithc,Surge protector device,distribution box Enclosure, inverter, DC fuse etc. Providing customers very competitive sources, and can be your sourcing agent in China. Goods are following international standards, IE, CE, ISO9001 ,SGS etc.

##### 3) Q: Do you have forwarder?

A: Yes, we have good forwarder cooperated over 10 years, they help us import and export . For small package orders, suggest to use by Express.

##### 4) Q: Your address ?

A: Locates in Guangzhou province, China,welcome to visit us

##### 5) Q:What's the Barrier Terminal Block guarantee?

A: 2 years warranty. If customer's problem, then customer burden. If our problem, then we send new goods to customer to replace asap.

##### 6) Q:What's about MOQ? Delivery time ?

A: 1pcs for Barrier Terminal Block.

##### 7) Q: What's the payment term?

A: Normally 100% T/T in advanced payment. If big order then about 50% advanced payment, balance before shipment.PAYPAL,WESTERN UNION,CASH for small order .

##### 8) Q:What's your contact information ?

**Send us your inquiry !we will reply you in 24 hours !**



Guangzhou Golden Electric Co., Ltd.



008618998498109



eva@china-golden.com.cn



chinagoldene.com

Building 4, Self-edited Building, No. 728, Kaichuang Avenue, Yunpu Industrial Zone, Huangpu District,  
Guangzhou city,Guangdong province,China