

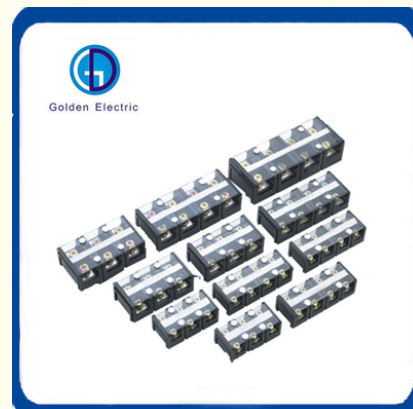


High Current 100A 200A Terminal Connector 2p 3p 4p for General Environmental Protection

Our Product Introduction

Basic Information

- Place of Origin: China
- Brand Name: Golden Electric /OEM
- Certification: ISO 9001, ISO 9000, ISO 14001, ISO 14000, ISO 20000, OHSAS/ OHSMS 18001, IATF16949
- Minimum Order Quantity: 1
- Packaging Details: Carton/Pallet
- Delivery Time: Peak Season Lead Time: more than 12 months
Off Season Lead Time: within 15 workdays
- Payment Terms: LC, T/T, PayPal, Western Union
- Supply Ability: 5000/Month



Product Specification

- Production Process: Injection Molding
- Brand: Golden Electric /OEM
- Product Name: Barrier Terminal Blocks
- Rated Voltage: 600V
- Wire Range: 22-14AWG
- Rated Current: 60,100,150,200,300,400,600A
- Conductor Material: Copper
- Base Material: Bakelite
- Transparent Cover Material: As Resin
- Transport Package: Standara Export Carton
- Specification: 2P/3P/4P
- Trademark: Golden Or Netural, Or Customer Brand
- Origin: China
- HS Code: 8536909000
- Supply Ability: 20000PCS/Month



More Images



for more products please visit us on chinagoldene.com

Product Description

Product Description

- 1.The outer casing is made of thermosetting plastics.
- 2.Copper conductor, good electrical conductivity, nickel-plated anti-corrosion.
- 3.Dust-proof and transparent plastic protective cover for durability.

TC Series Connectors Terminals Blocks

1.Adopting thermosetting plastics,the safety factor of high current is more reliable, structure parts adopt plate screw clamping technology, rated AC voltage is 600V, rated current of conducting strips is as following:
60A,100A,150A,200A,300A,400A,600A, the range of wire section is from 10mm to 300mm.

2.It can be divided into 3P 4P flat screw installation according to arrangement, it will be more reliable by using together without terminations, it can be used for connecting high current of kinds of electric devices.

Product Parameters

Model	N Wire Section	Rated Current/Voltage	Insulation resistance	Base Material	Transparent cover	Conductor Material	Flame level	Screw type/torque	L/W/H(mm)
TC-603	6-14mm ²	60A/600V	>100MΩ	Bakelite	AS resin	Brass	UL94 V0-V2	M6 2.8-4	85.5/43/31.5
TC-604	6-14mm ²	60A/600V	>100MΩ	Bakelite	AS resin	Brass	UL94 V0-V2	M6 2.8-4	114.5/43/31.5
TC-1003	10-22mm ²	100A/600V	>100MΩ	Bakelite	AS resin	Brass	UL94 V0-V2	M6 6-8	102.5/55/36
TC-1004	10-22mm ²	100A/600V	>100MΩ	Bakelite	AS resin	Brass	UL94 V0-V2	M6 6-8	137.5/55/36.5
TC-1503	10-50mm ²	150A/600V	>100MΩ	Bakelite	AS resin	Brass	UL94 V0-V2	M8 6-12	115/66/39.5
TC-1504	10-50mm ²	150A/600V	>100MΩ	Bakelite	AS resin	Brass	UL94 V0-V2	M8 6-12	153.5/66/39.5
TC-2003	25-70mm ²	200A/600V	>100MΩ	Bakelite	AS resin	Brass	UL94 V0-V2	M8 6-12	132.5/72/44
TC-2004	25-70mm ²	200A/600V	>100MΩ	Bakelite	AS resin	Brass	UL94 V0-V2	M8 6-12	176/72/44
TC-3003	35-150mm ²	300A/600V	>100MΩ	Bakelite	AS resin	Brass	UL94 V0-V2	M10 15-20	165/90/51.5
TC-3004	35-150mm ²	300A/600V	>100MΩ	Bakelite	AS resin	Brass	UL94 V0-V2	M10 15-20	220/90/51.5
TC-4003	35-185mm ²	400A/600V	>100MΩ	Bakelite	AS resin	Brass	UL94 V0-V2	M10 15-20	165/90/51.5
TC-4004	35-185mm ²	400A/600V	>100MΩ	Bakelite	AS resin	Brass	UL94 V0-V2	M10 15-20	220/90/51.5
TC-6003	50-300mm ²	600A/600V	>100MΩ	Bakelite	AS resin	Brass	UL94 V0-V2	M12 25-35	206/100/70
TC-6004	50-300mm ²	600A/600V	>100MΩ	Bakelite	AS resin	Brass	UL94 V0-V2	M12 25-35	275/100/70

Product Details

TC Series



TC-602

导线截面 wire section: 14mm²

额定电流/电压 rated current/voltage: 60A/600V

长/宽/高 length/width/height: 58/42.5/35mm



TC-603

导线截面 wire section: 14mm²

额定电流/电压 rated current/voltage: 60A/600V

长/宽/高 length/width/height: 83.5/41.2/32.5mm



TC-604

导线截面 wire section: 14mm²

额定电流/电压 rated current/voltage: 60A/600V

长/宽/高 length/width/height: 111.2/41.2/32.5mm



TC-605

导线截面 wire section: 14mm²

额定电流/电压 rated current/voltage: 60A/600V

长/宽/高 length/width/height: 145/43.2/32mm



TC-1002

导线截面 wire section: 22mm²

额定电流/电压 rated current/voltage: 100A/600V

长/宽/高 length/width/height: 69.5/55.3/38.5mm



TC-1003

导线截面 wire section: 22mm²

额定电流/电压 rated current/voltage: 100A/600V

长/宽/高 length/width/height: 99.2/53.5/37.8mm



TC-1004

导线截面 wire section: 22mm²

额定电流/电压 rated current/voltage: 100A/600V

长/宽/高 length/width/height: 132/53.5/37.8mm



TC-1005

导线截面 wire section: 22mm²

额定电流/电压 rated current/voltage: 100A/600V

长/宽/高 length/width/height: 173.5/55/38mm



TC-1503

导线截面 wire section: 60mm²

额定电流/电压 rated current/voltage: 150A/600V

长/宽/高 length/width/height: 114.5/65.3/40.8mm



TC-1504

导线截面 wire section: 60mm²

额定电流/电压 rated current/voltage: 150A/600V

长/宽/高 length/width/height: 153.5/66/40.8mm



TC-1505

导线截面 wire section: 60mm²

额定电流/电压 rated current/voltage: 150A/600V

长/宽/高 length/width/height: 193/66/40.5mm



TC-2003

导线截面 wire section: 100mm²

额定电流/电压 rated current/voltage: 200A/600V

长/宽/高 length/width/height: 133/71/47.5mm



TC-2004

导线截面 wire section: 100mm²

额定电流/电压 rated current/voltage: 200A/600V

长/宽/高 length/width/height: 177.5/71/44mm



TC-2005

导线截面 wire section: 100mm²

额定电流/电压 rated current/voltage: 200A/600V

长/宽/高 length/width/height: 224/72.7/46.2mm



TC-3003

导线截面 wire section: 150mm²

额定电流/电压 rated current/voltage: 300A/600V

长/宽/高 length/width/height: 165/90.5/52.5mm



TC-3004

导线截面 wire section: 150mm²

额定电流/电压 rated current/voltage: 300A/600V

长/宽/高 length/width/height: 220/90.5/52.5mm



TC-4003

导线截面 wire section: 200mm²

额定电流/电压 rated current/voltage: 400A/600V

长/宽/高 length/width/height: 165/90.5/52.5mm



TC-4004

导线截面 wire section: 200mm²

额定电流/电压 rated current/voltage: 400A/600V

长/宽/高 length/width/height: 220/90.5/52.5mm



TC-6003

导线截面 wire section: 300mm²

额定电流/电压 rated current/voltage: 600A/600V

长/宽/高 length/width/height: 207/100.5/75.5mm



TC-6004

导线截面 wire section: 300mm²

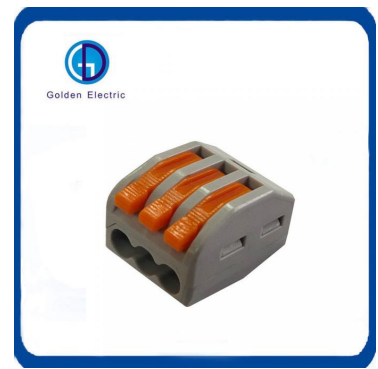
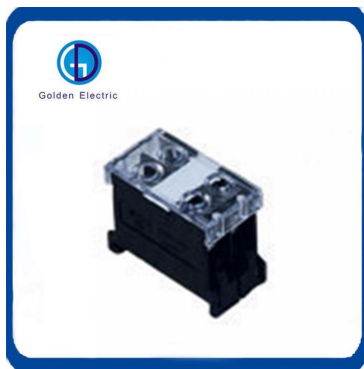
额定电流/电压 rated current/voltage: 600A/600V

长/宽/高 length/width/height: 275/100.5/75.5mm



Recommmand Product





Company Profile

- Golden Electric Co.,Ltd ,was foundad in 2007, we are professional for make AC and DC electric items such as cable gland,MC4 Connector, isolator switch , fuse , breaker , distribution box , PV combiner box ,surge protector, Indicator lamp,Solar Charge Controller,Industrial plug and socket,Meter Socket,Wind Turbine, Terminal Block,Solar product and so on.

- Golden has been granted ISO9001 management system certifications. The comprehensive product line has more than 1000 models which have been approved by TUV,CE,CQC,SGS,ROHS,SASO. The productsells well to UK, Spain, Portugal, Singapore, Turkey, Russia, Korea, South Africa... more than 60 countries and regions.

- Golden is always striving hard to provide the best services and competitive price to all customers.

FAQ

1)Q:How can i trust your company?

A:Golden electric is The top 10 manufacture in China- more than 350 Agents in local market and more than 100 foreign clients make OEM,ODM order from us,Golden electric is a big company, we have cooperation with LS, EKF the world-class companies. Our company over 100 employees, products pass CE,IEC,TUV,SAA, RCM, ROHS certificates.

2) Q:Your products?

A: Golden electric is factory for Automatic transfer swithc,Surge protector device,distribution box Enclosure, inverter, DC fuse etc. Providing customers very competitive sources, and can be your sourcing agent in China. Goods are following international standards, IE, CE, ISO9001 ,SGS etc.

3) Q: Do you have forwarder?

A: Yes, we have good forwarder cooperated over 10 years, they help us import and export . For small package orders, suggest to use by Express.

4) Q: Your address ?

A: Locates in Guangzhou province, China,welcome to visit us

5) Q:What's the Barrier Terminal Block guarantee?

A: 2 years warranty. If customer's problem, then customer burden. If our problem, then we send new goods to customer to replace asap.

6) Q:What's about MOQ? Delivery time ?

A: 1pcs for Barrier Terminal Block.

7) Q: What's the payment term?

A: Normally 100% T/T in advanced payment. If big order then about 50% advanced payment, balance before shipment.PAYPAL,WESTERN UNION,CASH for small order .

8) Q:What's your contact information ?

Send us your inquiry !we will reply you in 24 hours !



Guangzhou Golden Electric Co., Ltd.



008618998498109



eva@china-golden.com.cn



chinagoldene.com

Building 4, Self-edited Building, No. 728, Kaichuang Avenue, Yunpu Industrial Zone, Huangpu District,
Guangzhou city,Guangdong province,China