



## 10A 250VAC Temperature Control Electronic Thermostat for Chassis Cooling and Heating

Our Product Introduction

### Basic Information

- Place of Origin: China
- Brand Name: Golden Electric /OEM
- Certification: ISO 9001, ISO 9000, ISO 14001, ISO 14000, ISO 20000, OHSAS/ OHSMS 18001, IATF16949
- Minimum Order Quantity: 1
- Packaging Details: Carton/Pallet
- Delivery Time: Peak Season Lead Time: more than 12 months Off Season Lead Time: within 15 workdays
- Payment Terms: LC, T/T, PayPal, Western Union
- Supply Ability: 5000/Month



### Product Specification

- Environment Humidity: 5%-85%Rh
- Installation Method: Rail Installation
- Operating Voltage: 120-250V
- Output Signal: 10mA
- Dimensions: 67\*50\*38mm
- Control Type: Temperature
- Weight: 0.3kg
- Hole Size: 35mm
- Transport Package: Standard Export Carton
- Specification: GD-TC601/GD-TC602
- Trademark: Golden Or Natural Or Customer Brand
- Origin: China
- HS Code: 90321000
- Supply Ability: 50000PCS /Week
- Customized: Non-Customized



### More Images



for more products please visit us on [chinagoldene.com](http://chinagoldene.com)

## Product Description

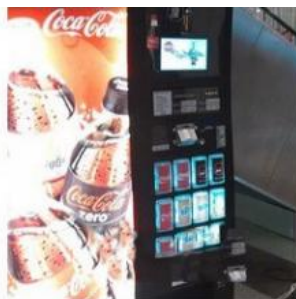
### Product Description



- 1.Double regulating temperature (refrigeration and heating)
- 2.high sensitivity
- 3.High switching performance
- 4.Guide card installed

The electromechanical hygrostat MRF 012 is designed to control enclosure heaters so that the dew point is raised when a critical relative humidity of 65% is exceeded. In this way, condensation and corrosion are effectively prevented.

### Application



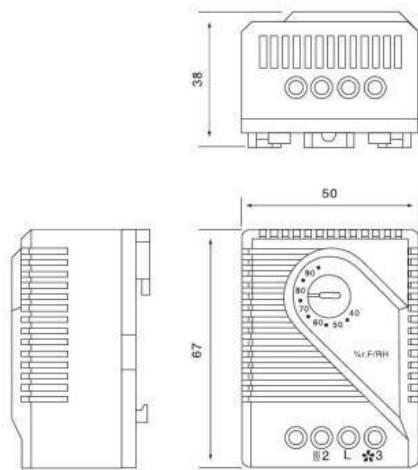
### Hot Product



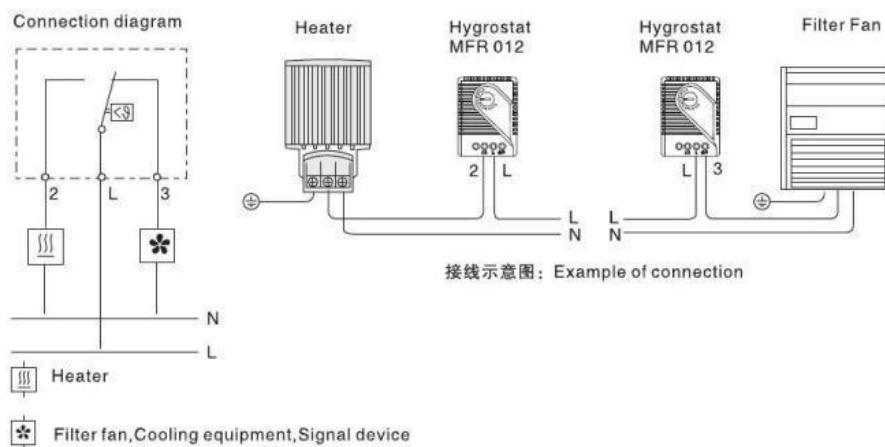
Product Parameters

Technical Data 技术参数	
Switch difference '切换差异'	4%RH(±3%tolerance)4%相对湿度(±3%公差)
Permissible air velocity允许空气流速	15m/sec 15m/秒
Contact type接触器类型	change-over contact转换触点
Contact resistance接触电阻	<10mΩ
Service life使用寿命	>100 000 cycles >100 000周期
Min. switching capacity最小转换量	20V AC/DC 100mA
Max. switching capacity最大转换量	250VAC, 5(1)A
	DC 20W
EMC电磁兼容性	acc to EN 55014-1-2, EN 61000-3-2, EN 61000-3-3 符合欧盟EN 55014-1-2, EN 61000-3-2, EN 61000-3-3标准
Connection 连接方式	3-pole terminal for 2.5mm <sup>2</sup> , clamping torque 0.5Nm max; rigid wire 2.5mm <sup>2</sup> , stranded wire(with wire end ferrule)1.5mm <sup>2</sup> 3级端子台, 线粗2.5mm <sup>2</sup> , 夹紧最大扭矩0.5Nm, 铜性线2.5mm <sup>2</sup> 铜绞线(线端带铁包头)1.5mm <sup>2</sup>
Mounting安装方式	clip for 35ram DIN rail, En50022 35mm DIN导轨卡装(EN50022)
Casing外壳	plastic according to UL94 V-0, light grey UL94 V-0浅灰色塑料
Dimensions尺寸	67 × 50 × 38mm
Weight重量	Approx. 60g 约60g
Fitting position安装方向	Variable 任意
Operating/Storage temperature 工作/储存温度	0 to+60°C(+32 to+140°F)/-20 to+80°C(-4 to+176°F)
Protection type保护等级	IP20
*at 50% RH	

Size



## Product wiring diagram



## Packaging & Shipping

### Packaging Details: Standard Export Package

#### Shipping:

1. By Air or by Sea for batch goods, Airport/ Port receiving;
2. Customers specifying freight forwarders or negotiable shipping methods!

#### Delivery Detail:

Shipped in 7 days after payment



## Company Profile



- Golden Electric Co.,Ltd ,was foundad in 2017, we are professional for make AC and DC electric items such as isolator switch , fuse , breaker , distribution box , PV combiner box ,surge protector, Industrial plug and socket,Solar product and so on.

- Golden has been granted ISO9001 management system certifications. The comprehensive product line has more than 1000 models which have been approved by TUV,CE,CQC,SGS,ROHS,SASO. The productsells well to UK, Spain, Portugal, Singapore, Turkey, Russia, Korea, South Africa... more than 60 countries and regions.

- Golden is always striving hard to provide the best services and competitive price to all customers.



## FAQ

### Q:How and how long can I get a sample to check your quality?

A: After price confirmation, you can require for samples to check our quality. Then after you send us confirmed files, the samples will be ready for delivery in 7 days. The samples will be sent to you via express and arrive in 5-7 workdays.

### Q:How to order our product ?

A: 1).Please tell us the model and quantity and other request you need.  
2).We make the PI for you.  
3).After you confirm the PI, we arrange the order for you after receiving your payment.  
4).After the goods finished, we send the goods out to you and tell you the tracking number.  
5).We will track your goods until you receive the goods.

### Q: Can I have a visit to your factory before the order?

A: Welcome! Our factory address: Dongan Industrial Zone,Yueqing City, Wenzhou, Zhejiang, China (Mainland)

### Q: What's your shipment method?

A: We ship by Express, by air, by sea, by train. Normally we checked and compare, then provide customer the most proper shipment method.

### Q: What's about MOQ?

A: First order MOQ=1pcs

### Q: If i want to release order, what's the payment method you accept ?

A: We accept T/T, Paypal, Western union, etc.

### Q: If i want to release order, what's the process?

A: Thanks. You can send inquiry to us by alibaba, or send us by email, we will reply within 24hrs.

## Our committent

**BETTER PRICE** than other sellers for you because of Factory Direct Sale.  
**BETTER QUALITY** than before caused by our 10+ years trading experience.  
**STOCK IN TRADE** always own to our Fast & Professional production line.  
**FAST DELIVERY** always made by our GROUP's Enthusiam.  
**TIMING REPLY** in 24 hours all about our TEAM's Passion & Patience.  
Send your Inquiry Details in the Below, **Click "Send" Now~**  
**YOUR BENEFITS IS OUR BUSINESS!!!**



**Guangzhou Golden Electric Co., Ltd.**



008618998498109



eva@china-golden.com.cn



chinagoldene.com

Building 4, Self-edited Building, No. 728, Kaichuang Avenue, Yunpu Industrial Zone, Huangpu District,  
Guangzhou city,Guangdong province,China