

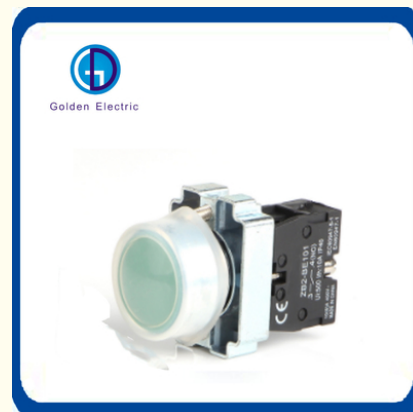


Customization Higher CE IP65 Momentary LED Bulb Type Emergency Stop Push Button Switch

Our Product Introduction

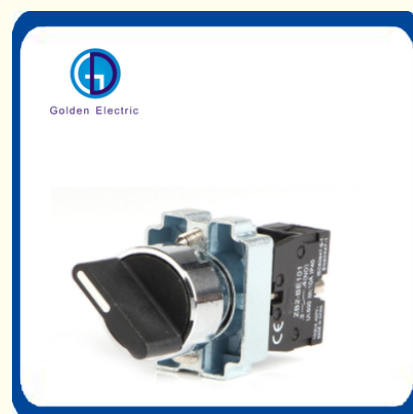
Basic Information

- Place of Origin: China
- Brand Name: Golden Electric /OEM
- Certification: ISO 9001, ISO 9000, ISO 14001, ISO 14000, ISO 20000, OHSAS/ OHSMS 18001, IATF16949
- Minimum Order Quantity: 1
- Packaging Details: Carton/Pallet
- Delivery Time: Peak Season Lead Time: more than 12 months Off Season Lead Time: within 15 workdays
- Payment Terms: LC, T/T, PayPal, Western Union
- Supply Ability: 5000/Month



Product Specification

- Input Voltage(V): 6~220V
- Lamp Luminous Flux(Lm): 60
- Light Source: LED
- Mounting Hole Size: 22mm
- Sound Type: Intermittent
- Working Current: $\leq 20\text{mA}$
- Insulation Resistance: $\geq 2\text{M}\Omega$
- Mounting: Panel Mounting
- Beam Angle($^{\circ}$): 360
- Lamp Luminous Efficiency(Lm/W): 200
- Lamp Power(W): 5
- CRI (Ra): 80
- Estimated Weight: 25g
- Working Voltage: 6V 12V 24V 36V 48V 110V 127V 220V



More Images



for more products please visit us on chinagoldene.com

Product Description

Product Description

型号及其含义 Mode and Meaning



Application








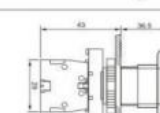

Product Parameters

使用环境条件 Working Environment

- 工作温度: -25~+70℃
Working environment temperature
- 储存温度: -40~+70℃
Storage temperature
- 污染等级: 3级
Class of pollution
- 防护等级: IP40/IP65/IP66
Protection grade: IP40/IP65/IP66
- 海拔极限高度: ≤2000米
Limit height: ≤2000米
- 符合标准 Standard
EN 60947-1, GB 14048.5

主要技术参数 Main Technical Data

- 额定绝缘电压: 600V
Rated insulation voltage
- 约定发热电流: 10A
Rated thermal current
- 开关额定值: AC-15 Ue:380V/250V, Ie=4.5A
Switch rating DC-13 Ue:220V/110V, Ie=0.6A
- 接触电阻: ≤50mA
Contact resistance
- 推荐扭力: 0.9Nm
Recommended torque
- 接线面积: 最小(min)1×0.5mm²,最大(Max)2×1.5mm²或(or)1×2.5mm²
Connectable area
- 机械寿命: 按钮(Pushbutton)≥300×104次(times); 旋钮 Selector Switch)≥1004次(times);
Mechanical life
- 急停按钮(Emergency Stop Pushbutton)≥30×104次(times)
- 电气寿命: ≥30×104次
Electrical life
- 灯电压极限: 0.8Ue≤U≤1.15Ue
Limit voltage(lamp)

Photo	Description	Contact	Type	Color	Contour
	Flush Button Momentary 平钮 弹簧返回 自复型	1NO 13 14	LA155-B2-EA11	White	
		1NO 13 14	LA155-B2-EA31	Green	
		1NO + 1NC 21 22	LA155-B2-EA55	Yellow	
		1NO 13 14	LA155-B2-EA61	Blue	
	Extended button Momentary 凸钮 弹簧返回 自复型	1NC 21 22	LA155-B2-EA42	Red	
		1NO 13 14	LA155-B2-EL11	White	
		1NO 13 14	LA155-B2-EL31	Green	
		1NO 13 14	LA155-B2-EL55	Yellow	
	Flush Button Momentary (with water-proof cover) 平钮(防水罩) 弹簧返回 自复型	1NO 13 14	LA155-B2-EL61	Blue	
		1NC 21 22	LA155-B2-EL42	Red	
		1NO 13 14	LA155-B2-EP11	White	
		1NO 13 14	LA155-B2-EP21	Black	
	Flush Button Momentary Marked 平钮(带符号) 弹簧返回 自复型	1NO 13 14	LA155-B2-EP33	Green	
		1NO 13 14	LA155-B2-EP61	Blue	
		1NC 21 22	LA155-B2-EP42	Red	
		1NO 13 14	LA155-B2-EA3341	White	
	Extended button Momentary Marked 凸钮(带符号) 弹簧返回 自复型	1NO 13 14	LA155-B2-EA3351	Black	
		1NO 13 14	LA155-B2-EA5331	Green	
		1NC 21 22	LA155-B2-EA4322	Red	
		1NC 21 22	LA155-B2-EA4342	Black	
	Mushroom button Momentary 蘑菇头按钮 弹簧返回 自复型 Φ40	1NO 13 14	LA155-B2-EL3341	White	
		1NO 13 14	LA155-B2-EL3351	Black	
		1NO 13 14	LA155-B2-EL5331	Green	
		1NC 21 22	LA155-B2-EL4322	Red	
	Mushroom button Momentary 蘑菇头按钮 弹簧返回 自复型 Φ60	1NO 13 14	LA155-B2-EL4342	Black	
		1NO 13 14	LA155-B2-EC21	Black	
		1NO 13 14	LA155-B2-EC31	Green	
		1NC 21 22	LA155-B2-EC42	Red	
	Mushroom button Momentary 蘑菇头按钮 弹簧返回 自复型 Φ60	1NO 13 14	LA155-B2-ER21	Black	
		1NO 13 14	LA155-B2-ER31	Green	
		1NC 21 22	LA155-B2-ER42	Red	
		1NC 21 22	LA155-B2-ER42	Red	

Explanation of Type Designation(型号命名方式解释)

Example(示例):

LA155-B2 - EA 3 1

LA155-B2 Series

LA155-B2 系列

1 = 1NO 2 = 1NC 3 = 2NO
4 = 2NC 5 = 1NO+1NC

331 334 432 336 335 533 434

1 = White(白) 2 = Black(黑) 3 = Green(绿) 4 = Red(红) 5 = Yellow(黄) 6 = Blue(蓝)

EA Flush Pushbutton(Momentary) 平钮(自复型)
EL Extended Pushbutton(Momentary) 凸钮(自复型)
EP Flush Pushbutton(Cover)(Momentary) 平钮(自复型,带防水罩)
EC Pushbutton,Mushroom(Momentary,Φ40) 蘑菇头按钮(自复型,Φ40)
ER Pushbutton,Mushroom(Momentary,Φ60) 蘑菇头按钮(自复型,Φ60)

RELATED PRODUCT



If you are interested in our products , please feel free to contact with us ,we will try our best to meet your demand.

Packaging & Shipping

Packing: Standard export carton.

Shipping: 1.By Air or by Sea for batch goods,Airport/ Port receiving;
2. Customers specifying freight forwarders or negotiable shipping methods!



Company Profile

- Golden Electric Co.,Ltd ,was foundad in 2017, we are professional for make AC and DC electric items such as **isolator switch , fuse , breaker , distribution box , PV combiner box ,surge protector, Industrial plug and socket,Solar product** and so on.

- Golden has been granted ISO9001 management system certifications. The comprehensive product line has more than 1000 models which have been approved by TUV,CE,CQC,SGS,ROHS,SASO. The productsells well to UK, Spain, Portugal, Singapore, Turkey, Russia, Korea, South Africa... more than 60 countries and regions.

- Golden is always striving hard to provide the best services and competitive price to all customers.



MAIN PRODUCT



FAQ

Q:How and how long can I get a sample to check your quality?

A: After price confirmation, you can require for samples to check our quality. Then after you send us confirmed files, the samples will be ready for delivery in 7 days. The samples will be sent to you via express and arrive in 5-7 workdays.

Q:How to order our product ?

A: 1).Please tell us the model and quantity and other request you need.
 2).We make the PI for you.
 3).After you confirm the PI, we arrange the order for you after receiving your payment.
 4).After the goods finished, we send the goods out to you and tell you the tracking number.
 5).We will track your goods until you receive the goods.

Q: Can I have a visit to your factory before the order?

A: Welcome! Our factory address: Dongan Industrial Zone,Yueqing City, Wenzhou, Zhejiang, China (Mainland)

Q: What's your shipment method?

A: We ship by Express, by air, by sea, by train. Normally we checked and compare, then provide customer the most proper shipment method.

Q: What's about MOQ?

A: First order MOQ=1pcs

Q: If i want to release order, what's the payment method you accept ?

A: We accept T/T, Paypal, Western union, etc.

Q: If i want to release order, what's the process?

A: Thanks. You can send inquiry to us by alibaba, or send us by email, we will reply within 24hrs.

Our commitent

BETTER PRICE than other sellers for you because of Factory Direct Sale.
BETTER QUALITY than before caused by our 10+ years trading experience.
STOCK IN TRADE always own to our Fast & Professional production line.
FAST DELIVERY always made by our GROUP's Enthusiam.
TIMING REPLY in 24 hours all about our TEAM's Passion & Patience.
 Send your Inquiry Details in the Below, **Click "Send" Now~**
YOUR BENEFITS IS OUR BUSINESS!!!



Guangzhou Golden Electric Co., Ltd.



008618998498109



eva@china-golden.com.cn



chinagoldene.com

Building 4, Self-edited Building, No. 728, Kaichuang Avenue, Yunpu Industrial Zone, Huangpu District,
 Guangzhou city,Guangdong province,China

