

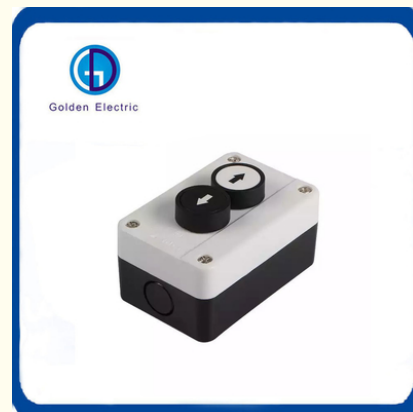


2P Retro-reflective Mode Momentary Push Button Control Switch for Poles Positioning

Our Product Introduction

Basic Information

- Place of Origin: China
- Brand Name: Golden Electric /OEM
- Certification: ISO 9001, ISO 9000, ISO 14001, ISO 14000, ISO 20000, OHSAS/ OHSMS 18001, IATF16949
- Minimum Order Quantity: 1
- Packaging Details: Carton/Pallet
- Delivery Time: Peak Season Lead Time: more than 12 months Off Season Lead Time: within 15 workdays
- Payment Terms: LC, T/T, PayPal, Western Union
- Supply Ability: 5000/Month



Product Specification

- Number Of Switch: Double Control Switch
- Structure: Power Built-in Type
- Usage: Control Button, Start Button, Control Switch
- Detection Method: Retro-reflective Mode
- Brand: Golden Electric /OEM
- Rated Current: 10A
- Protection Level: IP54
- Rated Voltage: 600V
- Product Name: Control Button Box
- Model: 2 Push Button Switch Box
- Transport Package: Standard Export Carton
- Specification: 2P
- Trademark: Golden Or Natural, Or Customer Brand
- Origin: China
- HS Code: 8536909000



More Images



for more products please visit us on chinagoldene.com

Product Description

Product Description

Our Weatherproof Enclosures have the solution for products in industrial environments with high demands on safety, durability, reliability and cost saving for the end user.

- Safety - tested and approved by third party testing laboratories.
- Durability - materials used give a high durability in tough conditions and environments.
- Reliability - high quality contacts ensure reliability.
- Cost saving - designed for quick and easy installation.

Plastic made, switch, push button switches, door switches for door, windows and awning;

Intelligent solutions to your home automation applications.

easily by a push button, all your doors, windows, garage, awnings, blinds etc could be managed automatically.

new ideas are welcome.

Normal working conditions:

1.Environment Temperature:-25°C~+55°C

2.Air Relative Humidity:≤98%

3.Normal work when the vibration frequency is 2~80Hz, the acceleration is 0.79g

4.Pollution grade is three, and installed sort is III, protection grade is above IP54.

5.Altitude:≤2000m.

6.Mechanical Life: Momentary:>2000000 times; alternate, selector>1000000 times; key-lock, emergency>1000000 times.

7.Shock Resistance: mushroom button 8g, buttons and LED 15g(40Hz<Frequency<500Hz)

8.Workability of contact point:AC-15:A600 or Ue=240V and Le=3A

DC-13:Q600 or Ue=250V and Le=0.27A comply IEC60947-5-1

9.Rated insulation voltage: Ui=440V, pollution degree 3, comply to IEC60947-5-1, Ui=600V

Product Features



High Quality

Provide first-class products and services for your quality assurance

Excellent Design

Professional Production, dedicated to developing and manufacturing low-voltage electric appliances, introduced high technology.



Product Parameters

Type	2 button up down push button station control box
Material	Plastic
Ambient temperature	-25°C~55°C
Max current	10A
Max voltage	600V
Certificate	CCC CE
IP rating	IP54

Product Details





Recommand Product



Company Profile

- Golden Electric Co.,Ltd ,was foundad in 2007, we are professional for make **AC and DC electric items** such as cable gland,MC4 Connector, isolator switch , fuse , breaker , distribution box , PV combiner box ,surge protector, Indicator lamp,Solar Charge Controller,Industrial plug and socket,Busbar Insulator,Meter Socket,Wind Turbine, Terminal Block,Solar product and so on.

- Golden has been granted ISO9001 management system certifications. The comprehensive product line has more than 1000 models which have been approved by TUV,CE,CQC,SGS,ROHS,SASO. The productsells well to UK, Spain, Portugal, Singapore, Turkey, Russia, Korea, South Africa... more than 60 countries and regions.

- Golden is always striving hard to provide the best services and competitive price to all customers.

1)Q:How can i trust your company?

A:Golden electric is The top 10 manufacture in China- more than 350 Agents in local market and more than 100 foreign clients make OEM,ODM order from us,Golden electric is a big company, we have cooperation with LS, EKF the world-class companies. Our company over 100 employees, products pass CE,IEC,TUV,SAA, RCM, ROHS certificates.

2) Q:Your products?

A: Golden electric is factory for Automatic transfer switch, Surge protector device, distribution box Enclosure, inverter, DC fuse etc. Providing customers very competitive sources, and can be your sourcing agent in China. Goods are following international standards, IE, CE, ISO9001 ,SGS etc.

3) Q: Do you have forwarder?

A: Yes, we have good forwarder cooperated over 10 years, they help us import and export . For small package orders, suggest to use by Express.

4) Q: Your address ?

A: Locates in Guangzhou province, China,welcome to visit us

5) Q:What's the Switch Box guarantee?

A: 2 years warranty. If customer's problem, then customer burden. If our problem, then we send new goods to customer to replace asap.

6) Q:What's about MOQ? Delivery time ?

A: 1pcs for Switch Box.

7) Q: What's the payment term?

A: Normally 100% T/T in advanced payment. If big order then about 50% advanced payment, balance before shipment.PAYPAL,WESTERN UNION,CASH for small order .

8) Q:What's your contact information ?

Send us your *inquiry* !we will reply you in 24 hours !

If you need information about this product. Please *Click here* to contact me and we will provide you with more information about the products.



Guangzhou Golden Electric Co., Ltd.



008618998498109



eva@china-golden.com.cn



chinagoldene.com

Building 4, Self-edited Building, No. 728, Kaichuang Avenue, Yunpu Industrial Zone, Huangpu District,
Guangzhou city,Guangdong province,China