



Sc Full Series Tinned Plated Copper Cable Lug Customization for Optimal Performance

Our Product Introduction

Basic Information

- Place of Origin: China
- Brand Name: Golden Electric /OEM
- Certification: ISO 9001, ISO 9000, ISO 14001, ISO 14000, ISO 20000, OHSAS/ OHSMS 18001, IATF16949
- Minimum Order Quantity: 1
- Packaging Details: Carton/Pallet
- Delivery Time: Peak Season Lead Time: more than 12 months Off Season Lead Time: within 15 workdays
- Payment Terms: LC, T/T, PayPal, Western Union
- Supply Ability: 5000/Month



Product Specification

- Model No.: Gty
- Structure: Clamp
- Usage: Cable Clamp
- Samples: Free Samples
- Surface: Tin Coted
- Keyword: Copper Electrical Cable Lug
- Wire Section: 10mm
- Connect Type: Ring
- Hole Section: 35mm
- Purity: 99.9%
- Transport Package: Standara Export Carton
- Specification: Different Sizes And Specifications
- Trademark: Golden Electric Or Customize
- Origin: China
- HS Code: 8537209000



More Images



for more products please visit us on chinagoldene.com

Product Description

Product Description

SC-1 copper cable lugs are suitable for the connection of copper conductors (section 1.5-1000mm²) in power cable with electronic equipment. They are made of 99.9% pure tin coated copper tube T2. Working temperature is from -55°C to +150°C.

Detailed Photos



Corrosion resistance, safety, long service life, strong electrical conductivity

Pure copper surface tin plating excellent workmanship, used in mechanical equipment factory distribution box

Products property:

will not happen corrosion, compare to aluminium connector.

use for termination.

the friction welding is well done.

its barrel capped is filled with joint compound to avoid oxidization.

the type test is follow IEC61238-1

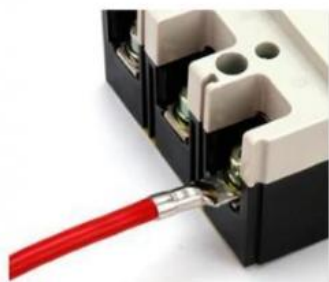
Material: Tinned E-Cu

Product Parameters

| Model | Φ | D | d | L |
|--------|---------------|------|-----|------|
| SC-1.5 | f4,f5 | 3.5 | 1.8 | 18 |
| SC-2.5 | f4,f5,f6 | 4 | 2.5 | 19 |
| SC-4 | f5,f6 | 4.8 | 3.1 | 21 |
| SC-6 | f5,f6,f8 | 5.5 | 3.8 | 24 |
| SC-10 | f6,f8 | 6.8 | 4.8 | 25.5 |
| SC-16 | f6,f8,f10 | 7.5 | 5.5 | 30.5 |
| SC-25 | f6,f8,f10,f12 | 7 | 7 | 34 |
| SC-35 | f8,f10,f12 | 10.5 | 8.2 | 38 |

| | | | |
|------------|------------|--------------|--------|
| SC-50 | f8,f10,f12 | 12.59.8 | 45 |
| SC-70 | f8,f10,f12 | 14.511.550 | |
| SC-95 | f10,f12 | 17.513.855.5 | |
| SC-120 | f12,f16 | 19.515.563 | |
| SC-150 | f12,f16 | 20.516.570 | |
| SC-185 | f16 | 23.518.878 | |
| SC-240 | f16 | 26 | 21 92 |
| SC-300 | f16,f20 | 30 | 24 102 |
| SC-400 | f16,f20 | 34 | 27 113 |
| SC-500 | f16,f20 | 38 | 30 123 |
| SC-630 | f20 | 45 | 35 135 |
| SC-800 | f22 | 50 | 40 170 |
| SC-1000f22 | | 56 | 44 200 |

Technological characteristics



EASY INSTALLATION

Easy connection, Time and labor saving

1

2

MATERIAL SAFETY

Copper conductor, Brand pvc



COPPER



TIN PLATING TREATMENT





MORE CHOICE

3

Corrosion resistance, oxidation resistance, high conductivity.

HOW TO USE



1

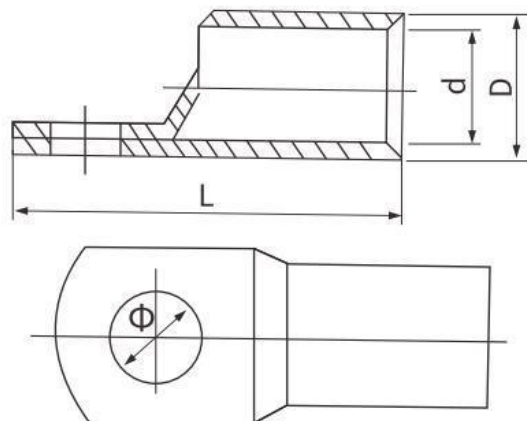


2



3

Drawings



Provide you with many options



Closed end Terminal



Nylon Connectors



Tube Type Terminal



Plug-in Terminal



Copper Bare Terminal



Insulated Copper Terminals

Company Profile

- Golden Electric Co.,Ltd ,was foundad in 2007, we are professional for make AC and DC electric items such as cable gland, isolator switch , fuse and fuse holder, Circuit breaker , distribution box , PV combiner box ,surge protector, Timer Switch,Industrial plug and socket,Wind Turbine, Solar product, busbar clamp and so on.

- Golden has been granted ISO9001 management system certifications. The comprehensive product line has more than 1000 models which have been approved by TUV,CE,CQC,SGS,ROHS,SASO. The productsells well to UK, Spain, Portugal, Singapore, Turkey, Russia, Korea, South Africa... more than 60 countries and regions.

- Golden is always striving hard to provide the best services and competitive price to all customers.

FAQ

1)Q:How can i trust your company?

A:Golden electric is The top 10 manufacture in China - more than 350 Agents in local market and more than 100 foreign clients make OEM,ODM order from us,Golden electric is a big company, we have cooperation with LS, EKF the world-class companies. Our company over 100 employees, products pass CE,IEC,TUV,SAA, RCM, ROHS certificates.

2) Q:Your products?

A: Golden electric is factory for Circuit Breaker,Automatic transfer switch,Surge protector device,distribution box Enclosure, inverter, DC fuse, busbar clamp etc. Providing customers very competitive sources, and can be your sourcing agent in China. Goods are following international standards, IE, CE, ISO9001 ,SGS etc.

3) Q: Do you have forwarder?

A: Yes, we have good forwarder cooperated over 10 years, they help us import and export . For small package orders, suggest to use by Express.

4) Q: Your address ?

A: Locates in Guangzhou province, China,welcome to visit us

5) Q:What's the Fuse, Fuse holder guarantee?

A: 2 years warranty. If customer's problem, then customer burden. If our problem, then we send new goods to customer to replace asap.

6) Q:What's about MOQ? Delivery time ?

A: 1pcs for Fuse holder.

7) Q: What's the payment term?

A: Normally 100% T/T in advanced payment. If big order then about 50% advanced payment, balance before shipment.PAYPAL,WESTERN UNION,CASH for small order .

8) Q:What's your contact information ?

Send us your inquiry !we will reply you in 24 hours !



Guangzhou Golden Electric Co., Ltd.



008618998498109



eva@china-golden.com.cn



chinagoldene.com

Building 4, Self-edited Building, No. 728, Kaichuang Avenue, Yunpu Industrial Zone, Huangpu District,
Guangzhou city,Guangdong province,China