

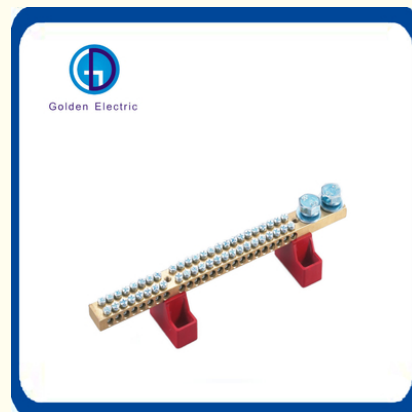


ISO9001 Certified 63A 125A Customized Double Row Tinned Brass or Copper Terminal Blocks

Our Product Introduction

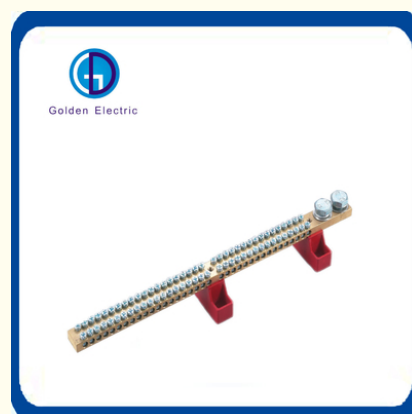
Basic Information

- Place of Origin: China
- Brand Name: Golden Electric /OEM
- Certification: ISO 9001, ISO 9000, ISO 14001, ISO 14000, ISO 20000, OHSAS/ OHSMS 18001, IATF16949
- Minimum Order Quantity: 1
- Packaging Details: Carton/Pallet
- Delivery Time: Peak Season Lead Time: more than 12 months Off Season Lead Time: within 15 workdays
- Payment Terms: LC, T/T, PayPal, Western Union
- Supply Ability: 5000/Month

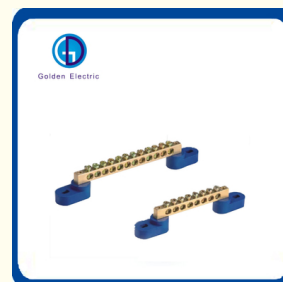
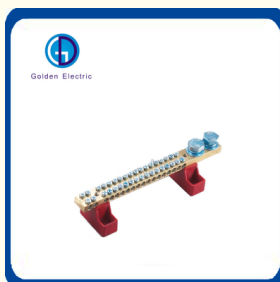
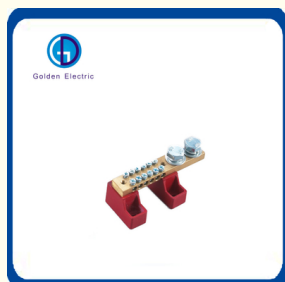


Product Specification

- Applicable Ambient Temperature: -30-110
- Rated Voltage: 250V/380V
- Length: 100cm
- Transport Package: Standard Export Carton
- Specification: 63A 125A
- Trademark: Golden Or Natural Or Customer Brand
- Origin: China
- HS Code: 8536909000
- Supply Ability: 5000000PCS/Month
- Surface Treatment: Silver Plated
- Certification: RoHS, CE, TUV, ISO9001
- Material: Brass+PP
- Character: Insulation, Environmental Protection
- Species: Terminal



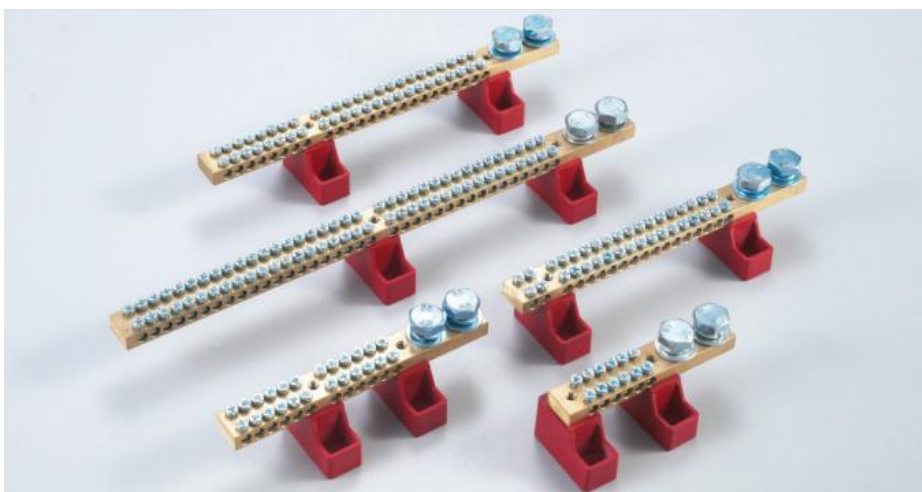
More Images



for more products please visit us on chinagoldene.com

Product Description

Product Description



Double Row Brass Terminals Series

Material: Brass

Features: Good conductivity, low contact resistance, safe and reliable.

Busbar Description: The Earth bus bar ease wiring of electrical item, enlarge connection area, decrease temperature rise and thus increase the electrical reliability of electrical items.

Busbar Technical Feature:

1. Brass, screw is Iron plated zinc;
2. 94V-2 grade.
3. Rated voltage is 250V/380V
4. Applicable ambient temperature -30-110
5. Color: red

Product Parameters

Item No.	Way	Installation dimensions (mm)	Outline Dimensions (mm)	Cross Sectional(mm ²)	Rated Current(A)
GDAH2-6	6	50*M5	102*45*45	9*19	180A
GDAH2-12	12	50*M5	144*45*45	9*19	180A
GDAH2-18	18	120*M5	187*45*45	9*19	180A
GDAH2-24	24	120*M5	230*45*45	9*19	180A
GDAH2-30	30	120*M5	273*45*45	9*19	180A
GDAH2-36	36	120*M5	315*45*45	9*19	180A
GDAH2-42	42	120*M5	357*45*45	9*19	180A
GDAH2-48	48	120*M5	399*45*45	9*19	180A
GDAH2-54	54	120*M5	441*45*45	9*19	180A
GDAH2-60	60	3-120*M5	499*45*45	9*19	180A
GDAH2-72	72	3-120*M5	583*45*45	9*19	180A
GDAH2-80	80	3-120*M5	639*45*45	9*19	180A
GDAH2-84	84	3-120*M5	657*45*45	9*19	180A
GDAH2-96	96	3-120*M5	751*45*45	9*19	180A
GDAH2-108	108	3-120*M5	835*45*45	9*19	180A

Company Profile

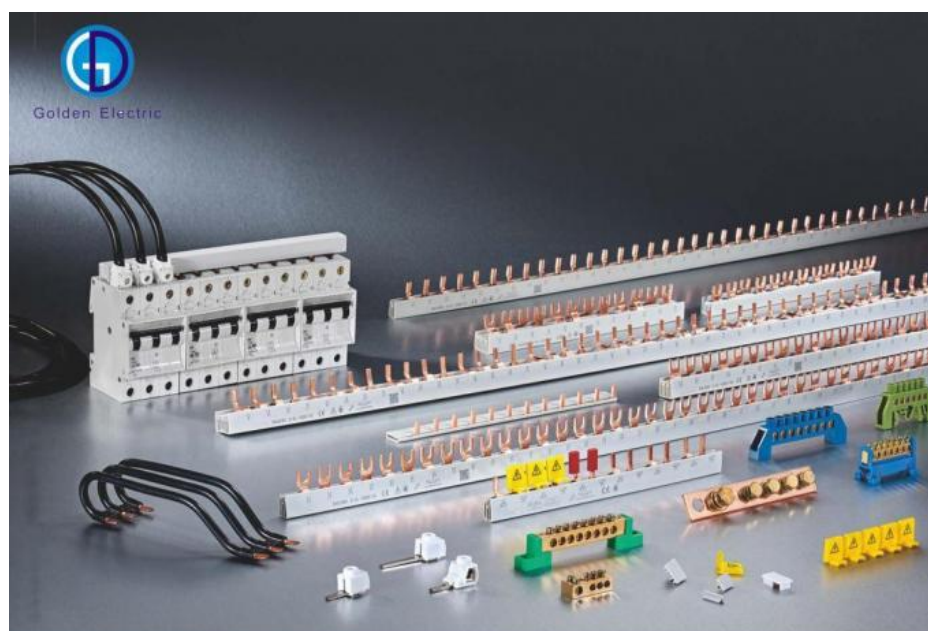
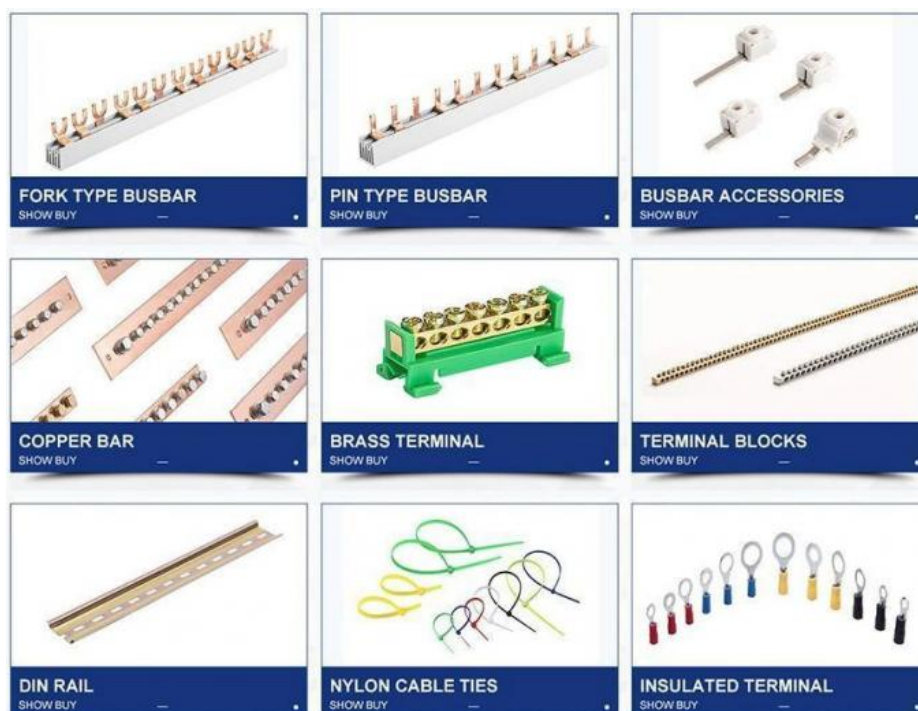
- Golden Electric Co.,Ltd ,was foundad in 2017, we are professional for make AC and DC electric items such as cable gland,cable tie ,isolator switch , fuse , breaker , distribution box , PV combiner box ,surge protector, Industrial plug and socket,Solar product and so on.

- Golden has been granted ISO9001 management system certifications. The comprehensive product line has more than 1000 models which have been approved by TUV,CE,CQC,SGS,ROHS,SASO. The productsells well to UK, Spain, Portugal, Singapore, Turkey, Russia, Korea, South Africa... more than 60 countries and regions.

- Golden is always striving hard to provide the best services and competitive price to all customers.



Main Product



Packaging Details:

Customized Packing: Header card packing, Blister with card packing, Double blister packing, Canister packing, other packing can be supplied according customers request.



Shipping:

1. By Air or by Sea for batch goods,Airport/ Port receiving;
2. Customers specifying freight forwarders or negotiable shipping methods!

Delivery Detail:

Shipped in 7 days after payment



FAQ

1. Could i put my own logo on it?

> Sure, of course,we have over 18 years OEM experience,customers' logo can be made by laser, engraved, embossed, transfer printing etc.

2. Should i pay extra for logo printing ?

> If you order amount over out MOQ for OEM package,all OEM fees would be free,if you want to make a trial order,we need to charge a very little fees for the printing and cartons.

3. How about the quality?

We import DU POND brand PA66 nylon raw material from USA,we make sure good quality from the most important factor.

> Acquire the CE & FDA Certification.

> 100% QC in produce process and before package.

4. Could i buy 1pc sample first and small order ?

> Of course, support sample order and small order, especially for new customers under certain condition.

5. How much for 1pc sample ?

> we will send 1 bag for free

6. If i have my thoughts, do you have person to design according to my concept?

> Certainly,our design team is willing to do for you.

7. How long to make a sample?

> 3days which depends on the samples' complexity.

Send your Inquiry Details in the Below, Click "[Send](#)" Now!!!



Guangzhou Golden Electric Co., Ltd.



008618998498109



eva@china-golden.com.cn



chinagoldene.com

Building 4, Self-edited Building, No. 728, Kaichuang Avenue, Yunpu Industrial Zone, Huangpu District,
Guangzhou city,Guangdong province,China