



63A 230V DIN Rail Over/Under Voltage Current Protector with Kwh Energy Meter

Our Product Introduction

Basic Information

- Place of Origin: China
- Brand Name: Golden Electric /OEM
- Certification: ISO 9001, ISO 9000, ISO 14001, ISO 14000, ISO 20000, OHSAS/ OHSMS 18001, IATF16949
- Minimum Order Quantity: 1
- Packaging Details: Carton/Pallet
- Delivery Time: Peak Season Lead Time: more than 12 months
Off Season Lead Time: within 15 workdays
- Payment Terms: LC, T/T, PayPal, Western Union
- Supply Ability: 5000/Month



Product Specification

- Rated Voltage: 230VAC
- Rated Current: 1-63A
- Frequency: 50/60 Hz
- Display: Three LED Display
- Efficiency: High Efficiency
- Product Name: Over/Under Voltage & Current Protector
- Transport Package: Standard Export Carton
- Specification: 2P
- Trademark: Golden Or Natural, Or Customer Brand
- Origin: China
- HS Code: 8536300000
- Supply Ability: 20000PCS/Month
- Operation: Electric Type
- Installation: Fixed
- Poles Number: 2



More Images



for more products please visit us on chinagoldene.com

Product Description

Product Description

Single phase voltage/current protector integrates over-voltage protection, under-voltage protection, over-current protection and integrated intelligent protector. When there is over-voltage, under-voltage and over-current solid barriers in the line, this product can instantly cut off the circuit, avoiding unnecessary damage to electrical equipment. When the circuit returns to normal, the protector can automatically restore the circuit to make the electrical equipment work normally. The overvoltage value, undervoltage value, overcurrent value, circuit recovery time value and overcurrent protection reset time value of this product can be set by themselves. Adjust the corresponding parameters according to local actual conditions and electrical usage conditions.

Product Features



Over-voltage Protection

Under-voltage Protection

Over-current Protection

Automatic Recovery

Action & Recovery Time Adjustable

Voltage Meter

Ammeter

Energy Meter

Product Parameters

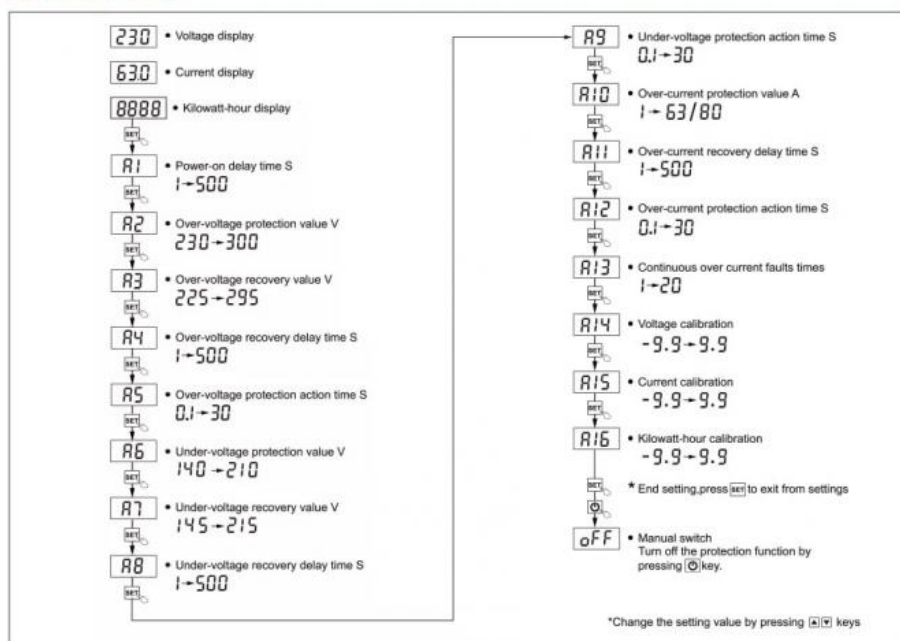
Function	Technical Parameter	Function	Technical Parameter
Input voltage	AC 140-300V	Power-on delay time	1-500s default 10s
Over-voltage protection value	230-300V default 270V	Over-voltage recovery value	225-295V default 265V
Under-voltage protection value	140-210V default 170V	Under-voltage recovery value	145-215V default 175V
Over-current protection value	63A:1-63A default 40A	Over-current recovery value	0.5-62.5A
	80A:1-80A default 60A		0.5-79.5A
Recovery delay time	1-500s default 30s	Action time	0.1-30s default 1s

Continuous over current faults times	1-20 times default OFF	Voltage/current/ kilowatt-hour calibration	-9.9-9.9%
Power consumption	≤2W	Electrical and mechanical life	≥100000cycles
Boundary dimention	86×38×68MM	Wiring	Over-entering down-out

Product Details

1.Product Setting:

Product setting:

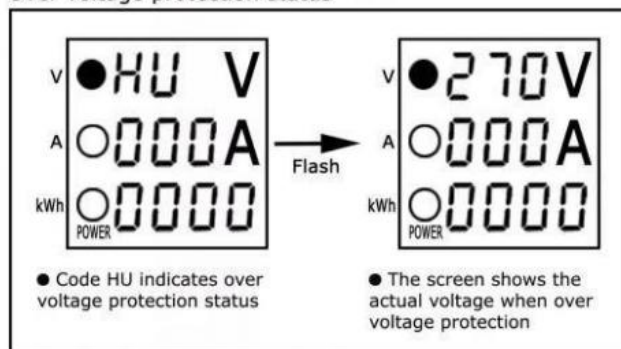


2.Panel instructions

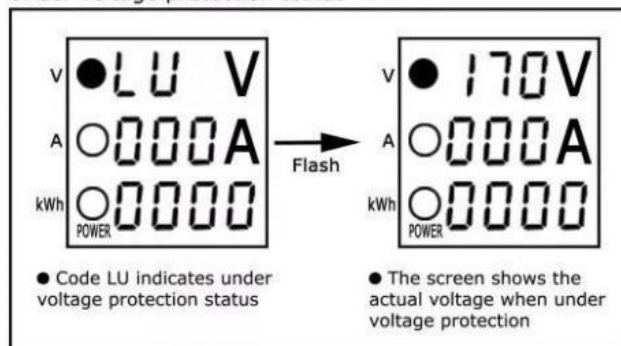


3.Screen Display Discription:

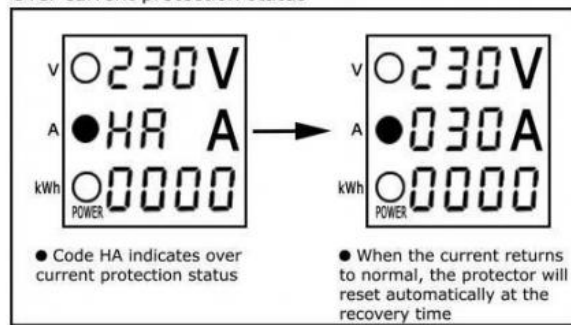
Over voltage protection status



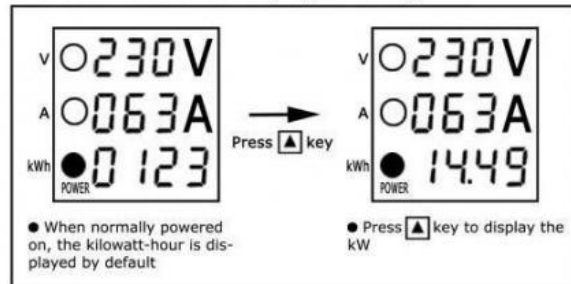
Under voltage protection status



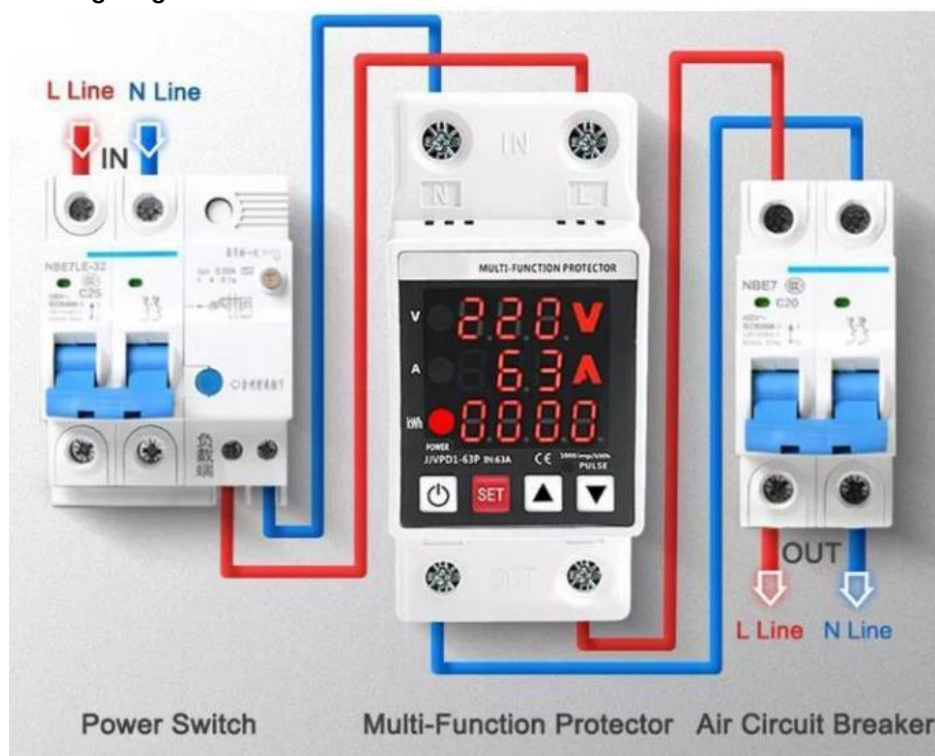
Over current protection status



Kilowatt-hour and kW display switching



4.Wiring Diagram:



Recommand Product



Company Profile

- Golden Electric Co.,Ltd ,was foundad in 2007, we are professional for make AC and DC electric items such as cable gland,MC4 Connector, isolator switch , fuse , breaker , distribution box , PV combiner box ,surge protector, Indicator lamp,Solar Charge Controller,Industrial plug and socket,Meter Socket,Wind Turbine, Terminal Block,Solar product, Voltage & Current Protector and so on.

- Golden has been granted ISO9001 management system certifications. The comprehensive product line has more than 1000 models which have been approved by TUV,CE,CQC,SGS,ROHS,SASO. The productsells well to UK, Spain, Portugal, Singapore, Turkey, Russia, Korea, South Africa... more than 60 countries and regions.

- Golden is always striving hard to provide the best services and competitive price to all customers.

FAQ

1)Q:How can i trust your company?

A:Golden electric is The top 10 manufacture in China- more than 350 Agents in local market and more than 100 foreign clients make OEM,ODM order from us.Golden electric is a big company, we have cooperation with LS, EKF the world-class companies. Our company over 100 employees, products pass CE,IEC,TUV,SAA, RCM, ROHS certificates.

2) Q:Your products?

A: Golden electric is factory for Automatic transfer swithc,Surge protector device,distribution box Enclosure, inverter, DC fuse etc. Providing customers very competitive sources, and can be your sourcing agent in China. Goods are following international standards, IE, CE, ISO9001 ,SGS etc.

3) Q: Do you have forwarder?

A: Yes, we have good forwarder cooperated over 10 years, they help us import and export . For small package orders, suggest to use by Express.

4) Q: Your address ?

A: Locates in Guangzhou province, China,welcome to visit us

5) Q:What's the Voltage & Current Protector guarantee?

A: 2 years warranty. If customer's problem, then customer burden. If our problem, then we send new goods to customer to replace asap.

6) Q:What's about MOQ? Delivery time ?

A: 1pcs for Voltage & Current Protector.

7) Q: What's the payment term?

A: Normally 100% T/T in advanced payment. If big order then about 50% advanced payment, balance before shipment.PAYPAL,WESTERN UNION,CASH for small order .

8) Q:What's your contact information ?

Send us your inquiry !we will reply you in 24 hours !

If you need information about this product. Please [Click here](#) to contact me and we will provide you with more information about the products.



Guangzhou Golden Electric Co., Ltd.



008618998498109



eva@china-golden.com.cn



chinagoldene.com

Building 4, Self-edited Building, No. 728, Kaichuang Avenue, Yunpu Industrial Zone, Huangpu District,
Guangzhou city, Guangdong province, China