

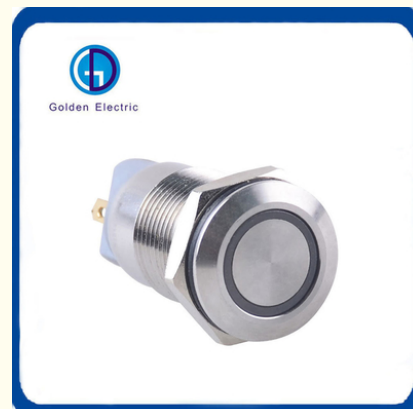


Small Size Metal Push Button Switch 12mm LED Waterproof Flat Round

Our Product Introduction

Basic Information

- Place of Origin: China
- Brand Name: Golden Electric /OEM
- Certification: ISO 9001, ISO 9000, ISO 14001, ISO 14000, ISO 20000, OHSAS/ OHSMS 18001, IATF16949
- Minimum Order Quantity: 1
- Packaging Details: Carton/Pallet
- Delivery Time: Peak Season Lead Time: more than 12 months
Off Season Lead Time: within 15 workdays
- Payment Terms: LC, T/T, PayPal, Western Union
- Supply Ability: 5000/Month



Product Specification

- Structure: Metal
- Usage: Control Button
- Kind: Single-pole On-off Switch
- Contact Type: Screw Terminal, Pin Terminal
- Brand: Golden Electric /OEM
- Operation Mode: Momentary, Or Maintained
- Lamp Voltage: AC/DC 6V, 12V, 24V, 110V, 220V
- Shell Material: Brass Nickel Plated, Stainless Steel
- Front Shape: Flat Round(F), High Round(H), Ball (B)
- Transport Package: Standard Export Carton
- Specification: 12mm
- Trademark: Golden Or Natural, Or Customer Brand
- Origin: China
- HS Code: 8536500000
- Supply Ability: 20000PCS/Month



More Images



for more products please visit us on chinagoldene.com

Product Description

Product Description

Product Features: Original design of C-type terminal of push button switch is designed with anti-shock safety protection structure, suitable for mounting holes of $\Phi 12\text{mm}$, $\Phi 16\text{mm}$, $\Phi 19\text{mm}$, $\Phi 22\text{mm}$, $\Phi 25\text{mm}$ and $\Phi 30\text{mm}$.

Product material: The outer casing is made of stainless steel and brass (chrome) nickel. Durable, impact resistant, waterproof, corrosion resistant, and abrasion resistant.

Product Parameters

| GL | GD | GDM |
|--------------|-----------------|--------------|
| Metal button | Metal indicator | Metal buzzer |

. Mounting aperture -----12mm

. Shape

| B | BA | BC | BE |
|--------------------------|--------------------------|----------------|----------------------|
| Spherical (Long shell) | Spherical (Short shell) | Big (Big head) | Spherical Round coat |
| BF | BP | | |
| Spherical (Square shell) | Spherical (Half plastic) | | |

| F | FA | FC |
|-------------------------|--------------------------|----------------|
| Flat button(Long shell) | Flat button(Short shell) | Big (Big head) |
| FE | FF | |
| Flat button(Round coat) | Flat button(Square coat) | |

| H | HA | HE |
|--------------------------|--------------------------|-------------------------|
| High button(Long shell) | High button(Short shell) | High button(Round coat) |
| HF | | |
| High button(Square coat) | | |

| T | X | XS |
|------------------------|---------------------------------|---------------------------|
| Maintained push button | 2-Postion selector button | 3-Postion selector button |
| M | Y | YS |
| Mushroom push button | 2-Postion key lock button | 3-Postion key lock button |
| Z | ZC | |
| Emergency stop button | Emergency stop button(Big head) | |

| E | D | S |
|-------|--------------|------------------|
| Annul | Single point | Power indication |

4. Voltage:AC.DC

| | | | |
|-----|------|------|------|
| 21 | 22 | 23 | 24 |
| 6V | 12V | 24V | 36V |
| 25 | 26 | 27 | 28 |
| 48V | 110V | 127V | 220V |

5. Shell material

| A | P | N |
|-----------------|---------|-------------------------|
| Aluminium alloy | plastic | Copper chromium plating |
| S | | |
| Stainless steel | | |

6. Connection mode:

| J | X | NO |
|---------|-----------|------------------|
| Welding | Belt line | Default Terminal |

Product Details



IP65 Waterproof

As it is full metal appearance and with a rubber ring, the switch achieves IP65 waterproof degree. It can used in wet environment, such as boat control panel, kitchen, outdoors etc. Note that this switch can be used under water.

Long Work Life

The metal shell and push part is not easy to damage. The Mechanical work Life is 1,000,000 times The switch use Silver Alloy contact to make the Electrical Work Life more than 50,000 times.





Pure Led Lights

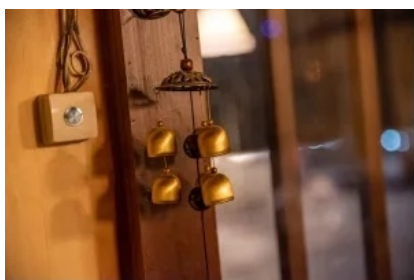
Switch use Light-lasting lamp beads, bright and dazzling brightness, long service life.

The work life of the led light is more than 40,000 hours.

Use bidirectional lamp bead: + and - wires can inversed without any risk

Auto Refit

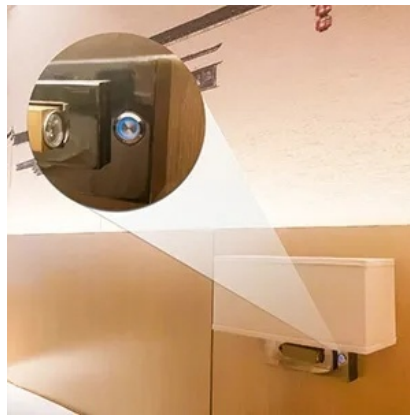
Use this switch to replace the light switch, horn switch or other control switches in the cars/ boats/ trucks. Bright and comfortable Led and metal appearance make the switch very cool.



The switch comes with a updated Wire Diagram.
More easier to read, A Non-Electrical Person Can
Install It Easy

Title goes here.

It can use as a door bell, entrance guard push button switch in the outdoors. As it is IP65, it can work relatively harsh environment.



Title goes here.

It is also a good choice to use it as a replacement switch of household Appliances. Such as table lamp switch, PC switch, Audio switch.

Recommmend Product



Company Profile

- Golden Electric Co.,Ltd ,was foundad in 2007, we are professional for make AC and DC electric items such as cable gland,MC4 Connector, isolator switch , fuse , breaker , distribution box , PV combiner box

,surge protector, Indicator lamp,Solar Charge Controller,Industrial plug and socket,Busbar Insulator,Meter Socket,Wind Turbine, Terminal Block,Solar product and so on.

- Golden has been granted ISO9001 management system certifications. The comprehensive product line has more than 1000 models which have been approved by TUV,CE,CQC,SGS,ROHS,SASO. The productsells well to UK, Spain, Portugal, Singapore, Turkey, Russia, Korea, South Africa... more than 60 countries and regions.

- Golden is always striving hard to provide the best services and competitive price to all customers.

FAQ

1) Q:How can i trust your company?

A:Golden electric is The top 10 manufacture in China - more than 350 Agents in local market and more than 100 foreign clients make OEM,ODM order from us,Golden electric is a big company, we have cooperation with LS, EKF the world-class companies. Our company over 100 employees, products pass CE,IEC,TUV,SAA, RCM, ROHS certificates.

2) Q:Your products?

A: Golden electric is factory for Automatic transfer swithc, Surge protector device, distribution box Enclosure, inverter, DC fuse etc. Providing customers very competitive sources, and can be your sourcing agent in China. Goods are following international standards, IE, CE, ISO9001 ,SGS etc.

3) Q:What standards is the main reference for using fuses in European countries?

A:IEC 60269

4) Q:What factors will affect the breaking capacity?

A: AC/DC Voltage, shot current levels.

5) Q: What factors will affect the overload capability?

A: Pre-loading, cyclic loading surges,manufacturing tolerances.

6) Q: Do you have forwarder?

A: Yes, we have good forwarder cooperated over 10 years, they help us import and export . For small package orders, suggest to use by Express.

7) Q: Your address ?

A: Locates in Guangzhou province, China,welcome to visit us

8) Q:What's the Push Button Switch guarantee?

A: 2 years warranty. If customer's problem, then customer burden. If our problem, then we send new goods to customer to replace asap.

9) Q:What's about MOQ? Delivery time ?

A: 1pcs for push button switch.

10) Q: What's the payment term?

A: Normally 100% T/T in advanced payment. If big order then about 50% advanced payment, balance before shipment.PAYPAL,WESTERN UNION,CASH for small order .

11) Q:What's your contact information ?

Send us your inquiry !we will reply you in 24 hours !

If you need information about this product. Please Click here to contact me and we will provide you with more information about the products.



Guangzhou Golden Electric Co., Ltd.



008618998498109



eva@china-golden.com.cn



chinagoldene.com

Building 4, Self-edited Building, No. 728, Kaichuang Avenue, Yunpu Industrial Zone, Huangpu District,
Guangzhou city,Guangdong province,China