

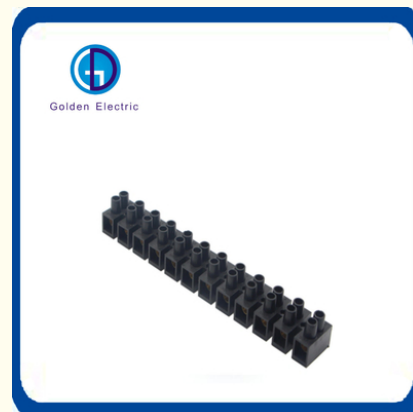


Environmental Protection H Type PE Material Plastic Terminals with TUV Certification

Our Product Introduction

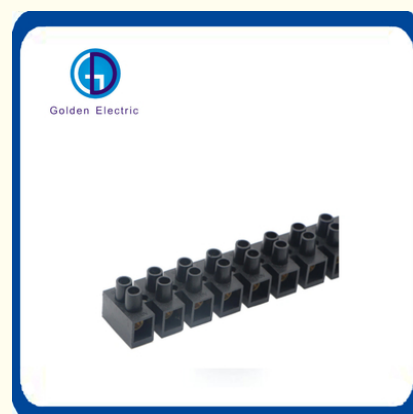
Basic Information

- Place of Origin: China
- Brand Name: Golden Electric /OEM
- Certification: ISO 9001, ISO 9000, ISO 14001, ISO 14000, ISO 20000, OHSAS/ OHSMS 18001, IATF16949
- Minimum Order Quantity: 1
- Packaging Details: Carton/Pallet
- Delivery Time: Peak Season Lead Time: more than 12 months Off Season Lead Time: within 15 workdays
- Payment Terms: LC, T/T, PayPal, Western Union
- Supply Ability: 5000/Month

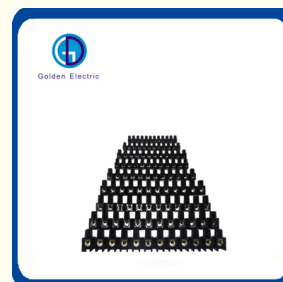
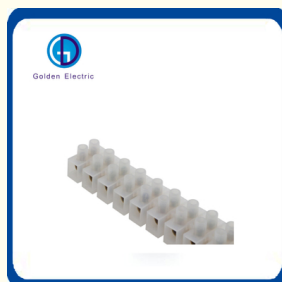


Product Specification

- Color: White/Black/Customized
- Metal Material: Copper
- Usage: Screw
- Installation Dimension: Th35*7.5
- Holder Material: PA
- Shape: Rectangle
- Dimension: 255*44*35mm
- Current: 150A
- Voltage: 380V
- Shell Material: PE/PP/PA
- Transport Package: Standard Export Carton
- Specification: 63A 125A
- Trademark: Golden Or Natural Or Customer Brand
- Origin: China
- HS Code: 8536909000

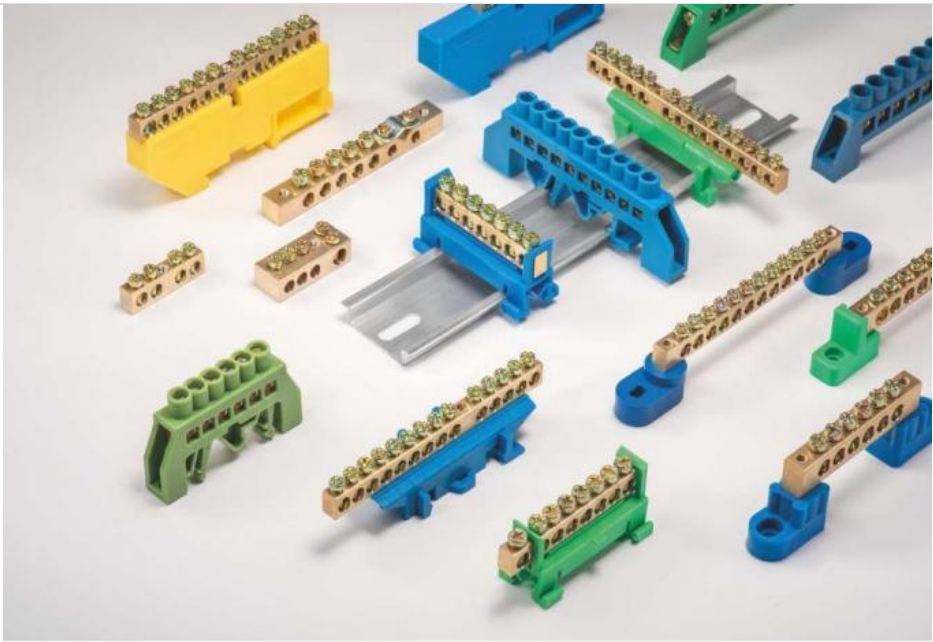


More Images



for more products please visit us on chinagoldene.com

Product Description



Brass Connector Series

Material: PA,Polyarnide 66,Copper.

Features: Good conductivity,low contact resistance,safe and reliable.

Busbar Description:The Earth bus bar ease wiring of electrical item, enlarge connection area, decrease temperature rise and thus increase the electrical reliability of electrical items.

Busbar Technical Feature:

- | |
|---|
| 1. Brass,screw is Iron plated zinc; |
| 2. 94V-2 grade. |
| 3. Rated voltage is 250V/380V |
| 4. Appliable ambient temperature -30-110 |
| 5. Standard length 1m, other length to be made upon request |

Item No.	Way	Installation dimensions(mm)	Outline Dimensions(mm)	Cross Sectional(mm2)
GDF-6904	4	49	58*10.5*35	6*9
GDF-6906	6	49	58*10.5*35	6*9
GDF-6908	8	70	79*10.5*35	6*9
GDF-6910	10	78	90*10.5*35	6*9
GDF-6912	12	92	102*10.5*35	6*9
GDF81206	6	66	78*12.5*38	8*12
GDF81208	8	83	94*12.5*38	8*12
GDF81210	10	100	111*12.5*38	8*12
GDF81212	12	118	128*12.5*38	8*12
GDF81214	14	134	146*12.5*38	8*12
GDF81216	16	148	160*12.5*38	8*12

Product Parameters

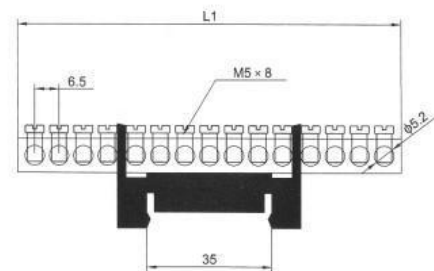


Item No.	mm ²	AMP (A)	VOLT(V)	L	W	H	Type
GD010	4	3	380	91	15	12	U/H
GD011	6	6	380	106	15	13	U/H
GD021	10	10	380	125	20	15	U/H
GD022	12	16	380	132	21.3	17	U/H
GD014	14	20	380	143	22	17.8	U/H
GD023	16	30	380	155	24	19	U/H
GD018	25	60	380	187	30	25.5	U/H
GD026	35	80	380	206	32.5	27	U/H
GD027	40	100	380	230	37	30	U/H
GD028	60	150	380	255	44	35	U/H

GDM SERIES



Dimensional Drawing

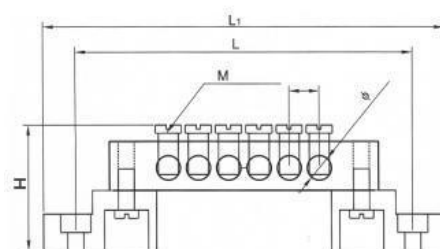


Item No.(G)	Item No(B)	Way	Installation dimensions mm(L)	Outline Dimensions mm(L1)	Cross Sectional(mm2)	Rated Current(A)
GDM-6907G	GDM-6907B	7	35*7.5	50*21*28	6*9	63A
GDM-6908G	GDM-6908B	8	35*7.5	57*21*28	6*9	63A
GDM-6910G	GDM-6910B	10	35*7.5	71.5*21*28	6*9	63A
GDM-6912G	GDM-6912B	12	35*7.5	84.5*21*28	6*9	63A
GDM-6913G	GDM-6913B	13	35*7.5	91*21*28	6*9	63A
GDM-6915G	GDM-6915B	15	35*7.5	104*21*28	6*9	63A

GDK SERIES



Dimensional Drawing



Item No.(E)	Item No(N)	Way	Installation dimensions mm(L)	Outline Dimensions mm(L1)	Cross Sectional(mm2)	Rated Current(A)
GDK-6904E	GDK-6904N	4	55	68*15.8*21	6*9	63A
GDK-6906E	GDK-6906N	6	68	81*15.8*21	6*9	63A
GDK-6908E	GDK-6908N	8	81	94*15.8*21	6*9	63A
GDK-6910E	GDK-6910N	10	94	107*15.8*21	6*9	63A
GDK-6912E	GDK-6912N	12	107	120*15.8*21	6*9	63A
GDK-6914E	GDK-6914N	14	120	133*15.8*21	6*9	63A
GDK-6916E	GDK-6916N	16	133	146*15.8*21	6*9	63A

Item No.(E)	Item No(N)	Way	Installation dimensions(mm)L	Outline Dimensions(mm)L1	Cross Sectional(mm2)	Rated Current(A)
GDK81204E	GDK81204N	4	62	75*15.8*34	8*12	125A
GDK81206E	GDK81206N	6	77	90*15.8*34	8*12	125A
GDK81208E	GDK81208N	8	92	105*15.8*34	8*12	125A

GDK81210E	GDK81210N	10	107	120*15.8*34	8*12	125A
GDK81212E	GDK81212N	12	122	135*15.8*34	8*12	125A
GDK81214E	GDK81214N	14	137	150*15.8*34	8*12	125A
GDK81216E	GDK81216N	16	152	165*15.8*34	8*12	125A

Company Profile

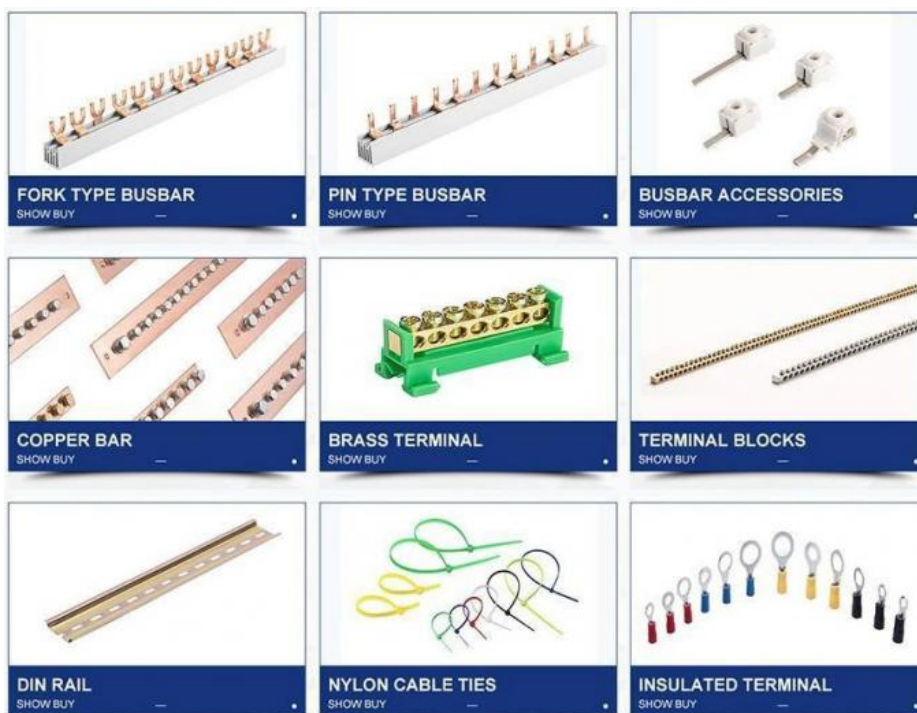
- Golden Electric Co.,Ltd ,was foundad in 2017, we are professional for make **AC and DC electric items** such as **cable gland,cable tie ,isolator switch , fuse , breaker , distribution box , PV combiner box ,surge protector, Industrial plug and socket,Solar product** and so on.

- Golden has been granted ISO9001 management system certifications. The comprehensive product line has more than 1000 models which have been approved by TUV,CE,CQC,SGS,ROHS,SASO. The productsells well to UK, Spain, Portugal, Singapore, Turkey, Russia, Korea, South Africa... more than 60 countries and regions.

- Golden is always striving hard to provide the best services and competitive price to all customers.



Main Product



Packaging & Shipping

Packaging Details:

Customized Packing: Header card packing, Blister with card packing, Double blister packing, Canister packing, other packing can be supplied according customers request.

Shipping:

1. By Air or by Sea for batch goods,Airport/ Port receiving;
2. Customers specifying freight forwarders or negotiable shipping methods!

Delivery Detail:

Shipped in 7 days after payment



FAQ

1. Could i put my own logo on it?

> Sure, of course, we have over 18 years OEM experience, customers' logo can be made by laser, engraved, embossed, transfer printing etc.

2. Should i pay extra for logo printing ?

> If you order amount over out MOQ for OEM package, all OEM fees would be free, if you want to make a trial order, we need to charge a very little fees for the printing and cartons.

3. How about the quality?

We import DU POND brand PA66 nylon raw material from USA, we make sure good quality from the most important factor.

> Acquire the CE & FDA Certification.

> 100% QC in produce process and before package.

4. Could i buy 1pc sample first and small order ?

> Of course, support sample order and small order, especially for new customers under certain condition.

5. How much for 1pc sample ?

> we will send 1 bag for free

6. If i have my thoughts, do you have person to design according to my concept?

> Certainly, our design team is willing to do for you.

7. How long to make a sample?

> 3days which depends on the samples' complexity.

Send your Inquiry Details in the Below, Click "[Send](#)" Now!!!



Guangzhou Golden Electric Co., Ltd.



008618998498109



eva@china-golden.com.cn



chinagoldene.com

Building 4, Self-edited Building, No. 728, Kaichuang Avenue, Yunpu Industrial Zone, Huangpu District,
Guangzhou city, Guangdong province, China