



Sc Tin Plated Copper Crimping Terminal Connector Cable Lugs for Superior Conductivity

Our Product Introduction

Basic Information

- Place of Origin: China
- Brand Name: Golden Electric /OEM
- Certification: ISO 9001, ISO 9000, ISO 14001, ISO 14000, ISO 20000, OHSAS/ OHSMS 18001, IATF16949
- Minimum Order Quantity: 1
- Packaging Details: Carton/Pallet
- Delivery Time: Peak Season Lead Time: more than 12 months Off Season Lead Time: within 15 workdays
- Payment Terms: LC, T/T, PayPal, Western Union
- Supply Ability: 5000/Month



Product Specification

- Shape: Tubular
- Interface Type: AC/DC
- Brand: Golden Electric/OEM
- Rated Voltage: 415V
- Entry: Chamfered Entry
- Busbar: -55c~150c
- Size: 1.5~600mm2
- Coating: Tin
- OEM: Accept
- Sample: Accept
- Wire Range: 22~16/16~14/14~12/12~10 A.W.G
- Color: Natural
- Product Key Words: Insulated Terminal Blocks
- Shell Material: PVC
- Purity Copper: 99.9%



More Images



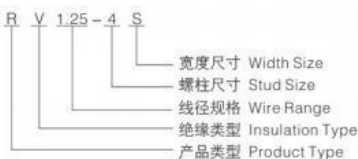
for more products please visit us on chinagoldene.com

Product Description

Product Description



型号含义 Type Meaning

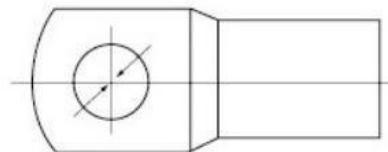
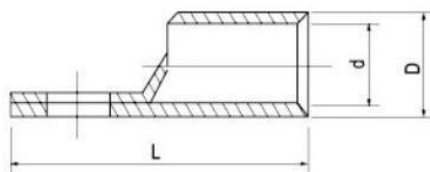


Product Details:

General Requirement

- 1.Material** E-Cu
- 2.Surface** Tin-plated mini 8 microns
- 3.Dimensional** As listed in the table
- 4.Standards** AS4325.1,DIN46235,DIN40500/2F-25
- 5.Application** up to 33KV. It is in accordance with DIN46235. And its type test is in accordance with IEC61236-1.
- 6. OEM & ODM** accepted

Product Parameters



Item No	Applicable Bolts	Dimensions(mm)				
		D	d	L2	L1	Φ
DTGA-2.5	m4,m6	4	2.4	23	7	6.6
DTGA-4		4.8	3.1	24	9	5.5
DTGA-6	m5,m6,m8m10,m12	5.5	3.8	27	9	5.5
DTGA-10		7	5	30	11	6.5
DTGA-16	m6,m8,m10	8	6	30.5	12	8.5
DTGA-25		9	7	35.5	16	8.5
DTGA-35	m6,m8 m10,m12	11	9	44	18	6.5
DTGA-50		12.5	10	47	20	10.6
DTGA-70	m8,m10	15	12	53	23	10.5
DTGA-95	m12,m16	17	14	57	24	12.5
DTGA-120	m10	19	16	54	28	12.6
DTGA-150	m12,m16	21	17	74	30	14.5
DTGA-185	m8,m10	23.5	19	80	34	14.5
DTGA-240	m16,m20	26	21	93	40	17
DTGA-300	m16,m20	29	23	102	46	17
DTGA-400	m16,m20	32	26	107	46	17
DTGA-500	m16,m20	36	29	125	48	17
DTGA-600	m16,m20	42	34	155	60	17

Note

Can be produced according to customer's drawings

Packaging & Shipping

Terminal Value Of Packaging



Value Pack: N-175(plastic box)
175 PCS 18 TYPE Assortment

编号 ITEM.NO.	数量 QTY	编号 ITEM.NO.	数量 QTY	编号 ITEM.NO.	数量 QTY
RV1.25-3	15	RV5.5-5	5	BV2	10
RV51.25-4	10	RV5.5-6	5	BV5.5	5
RV1.25-5	10	SV1.25-3	10	MDD1.25-250	10
RV2-3	15	SV51.25-4	10	MDD2-250	10
RV52-4	10	SVL2-4	10	FDD1.25-250	10
RVL2-5	10	BV1.25	10	FDD2-250	10



Value Pack: N-175(plastic box)
175 PCS 18 TYPE Assortment

编号 ITEM.NO.	数量 QTY	编号 ITEM.NO.	数量 QTY	编号 ITEM.NO.	数量 QTY
RV1.25-3	25	RV5.5-5	5	Bx2	10
RV51.25-4	25	RV5.5-6	5	BV5.5	5
RV1.25-5	25	SV1.25-3	20	MDD1.25-250	20
RV2-3	15	SV51.25-4	20	MDD2-250	20
RV52-4	20	SVL2-4	20	FDD1.25-250	20
RVL2-5	10	BV1.25	10	FDD2-250	20

Packaging Details:

Customized Packing: Header card packing, Blister with card packing, Double blister packing, Canister packing, other packing can be supplied according customers request.

Shipping:

1. By Air or by Sea for batch goods,Airport/ Port receiving;
2. Customers specifying freight forwarders or negotiable shipping methods!

Delivery Detail:

Shipped in 7 days after payment

Company Profile

- Golden Electric Co.,Ltd ,was foundad in 2017, we are professional for make **AC and DC electric items** such as **cable gland,cable tie ,isolator switch , fuse , breaker , distribution box , PV combiner box ,surge protector, Industrial plug and socket,Solar product** and so on.

- Golden has been granted ISO9001 management system certifications. The comprehensive product line has more than 1000 models which have been approved by TUV,CE,CQC,SGS,ROHS,SASO. The productsells well to UK, Spain, Portugal, Singapore, Turkey, Russia, Korea, South Africa... more than 60 countries and regions.

- Golden is always striving hard to provide the best services and competitive price to all customers.

Recommend Products



Closed end Terminal



Nylon Connectors



Tube Type Terminal



Plug-in Terminal



Copper Bare Terminal



Insulated Copper Terminals

Our Advantages

- 1.Best ensure 100% customer satisfaction.

2. Our products have one year guarantee.
3. Sample in design and easy to operate and maintain.
4. All electrical parts of products are made up for qualified materials.
5. No MOQ limited for the trial order.
6. We adopt good credit quality electrical appliances.
7. Best customer care and efficient after-sale services.
8. Don't hesitate to inquire us, we will reply you within 12 hours.

Production and transport



FAQ

Q1: Could I Put My Own Logo On It?

A1: Sure, of course, we are a professional manufacturer and have over 10 years OEM experience, customer's logo can be made by laser, engraved, embossed, transfer printing etc.

Q2: What's the delivery time?

A2: Normally, 3-15 days after order and payment confirmation. Actually, it will depend on your order quantity.

Q3: What's your terms of payment?

A3: T/T 30% as deposit, and 70% before delivery. We'll show you the photos of the products and packages before you pay the balance.

Q4: How do you make our business long-term and good relationship?

A4: a. We keep good quality and competitive price to ensure our customers benefit; b. We respect every customer as our friend and we sincerely do business and make friends with them, no matter where they come from.

Q5: If we bought your products, but found quality problem, how to solve?

A5: After confirmed, if the quality problem is caused by us not for outer sector, we will compensate each piece to customer.

How to contact us

Send your Inquiry Details in the Below, please Click "[send](#)" Now!

Good price and sample are waiting for you.



Guangzhou Golden Electric Co., Ltd.



008618998498109



eva@china-golden.com.cn



chinagoldene.com

Building 4, Self-edited Building, No. 728, Kaichuang Avenue, Yunpu Industrial Zone, Huangpu District,
Guangzhou city, Guangdong province, China