



## Secure and Durable DI Aluminum Cable Terminal Lug for Cable Connection

Our Product Introduction

### Basic Information

- Place of Origin: China
- Brand Name: Golden Electric /OEM
- Certification: ISO 9001, ISO 9000, ISO 14001, ISO 14000, ISO 20000, OHSAS/ OHSMS 18001, IATF16949
- Minimum Order Quantity: 1
- Packaging Details: Carton/Pallet
- Delivery Time: Peak Season Lead Time: more than 12 months Off Season Lead Time: within 15 workdays
- Payment Terms: LC, T/T, PayPal, Western Union
- Supply Ability: 5000/Month



### Product Specification

- Shape: Tubular
- Interface Type: AC/DC
- Brand: Golden Electric/OEM
- Rated Voltage: 415V
- Entry: Chamfered Entry
- Busbar: -55c~150c
- Size: 16-800mm<sup>2</sup>
- Coating: Tin
- OEM: Accept
- Sample: Accept
- Wire Range: 22~16/16~14/14~12/12~10 A.W.G
- Color: Natural
- Product Key Words: Insulated Terminal Blocks
- Shell Material: PVC
- Purity Copper: 99.9%



### More Images



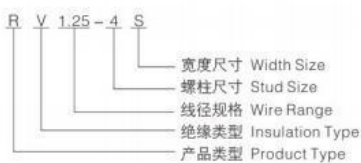
for more products please visit us on [chinagoldene.com](http://chinagoldene.com)

## Product Description

### Product Description



### 型号含义 Type Meaning



## DL aluminum cable terminal lug size

### Technical Requirements

#### Material:

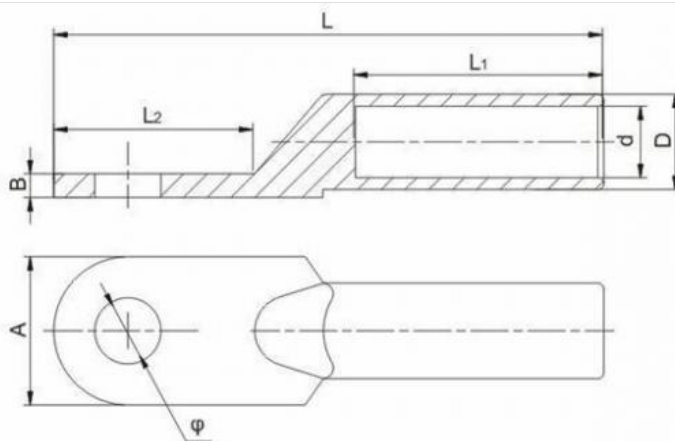
AL-99.5%

**Surface Treatment:** Acid cleaning, bright

**Product Property:** It is used to connect the aluminum conductor end



### Product Parameters



Type No	Main Dimensions(mm)					
	Φ	D	d	L	L1	A
DL-10	8.4	9	5	64	29	16
DL-16	8.4	10	5.5	70	32	16
DL-25	8.4	12	7	75	34	18
DL-35	10.5	14	8.5	85	40	20
DL-50	10.5	16	9.5	90	42	23
DL-70	12.5	18	12	102	47	26
DL-95	12.5	21	13	112	50	28
DL-120	14.5	23	15	120	53	30
DL-150	14.5	25	16	126	55	34
DL-185	16.5	27	18	133	58	37

DL-240	16.5	30	20	140	60	40
DL-300	21	34	23	165	65	45
DL-400	21	38	26	170	70	52
DL-500	21	42	29	190	75	60
DL-630	-	54	34	225	80	78
DL-800	-	60	38	270	90	100

## Packaging & Shipping

### Terminal Value Of Packaging



Value Pack: N-175(plastic box)  
175 PCS 18 TYPE Assortment

编 号 ITEM.NO.	数量 QTY	编 号 ITEM.NO.	数量 QTY	编 号 ITEM.NO.	数量 QTY
RV1.25-3	15	RV5.5-5	5	BV2	10
RV51.25-4	10	RV5.5-6	5	BV5.5	5
RV1.25-5	10	SV1.25-3	10	MOD1.25-250	10
RV2-3	15	SV51.25-4	10	MOD2-250	10
RV52-4	10	SVL2-4	10	FDD1.25-250	10
RVL2-5	10	BV1.25	10	FDD2-250	10



Value Pack: N-175(plastic box)  
175 PCS 18 TYPE Assortment

编 号 ITEM.NO.	数量 QTY	编 号 ITEM.NO.	数量 QTY	编 号 ITEM.NO.	数量 QTY
RV1.25-3	25	RV5.5-5	5	BV2	10
RV51.25-4	25	RV5.5-6	5	BV5.5	5
RV1.25-5	25	SV1.25-3	20	MOD1.25-250	20
RV2-3	15	SV51.25-4	20	MOD2-250	20
RV52-4	20	SVL2-4	20	FDD1.25-250	20
RVL2-5	10	BV1.25	10	FDD2-250	20

### Packaging Details:

**Customized Packing:** Header card packing, Blister with card packing, Double blister packing, Canister packing, other packing can be supplied according customers request.

### Shipping:

1. By Air or by Sea for batch goods,Airport/ Port receiving;
2. Customers specifying freight forwarders or negotiable shipping methods!

### Delivery Detail:

Shipped in 7 days after payment

### Company Profile

- Golden Electric Co.,Ltd ,was foundad in 2017, we are professional for make **AC and DC electric items** such as cable gland,cable tie ,isolator switch , fuse , breaker , distribution box , PV combiner box ,surge protector, Industrial plug and socket,Solar product and so on.

- Golden has been granted ISO9001 management system certifications. The comprehensive product line has more than 1000 models which have been approved by TUV,CE,CQC,SGS,ROHS,SASO. The productsells well to UK, Spain, Portugal, Singapore, Turkey, Russia, Korea, South Africa... more than 60 countries and regions.

- Golden is always striving hard to provide the best services and competitive price to all customers.

### Recommend Products



Closed end Terminal



Nylon Connectors



Tube Type Terminal



Plug-in Terminal



Copper Bare Terminal



Insulated Copper Terminals

### Our Advantages

1. Best ensure 100% customer satisfaction.
2. Our products have one year guarantee.
3. Sample in design and easy to operate and maintain.
4. All electrical parts of products are made up for qualified materials.
5. No MOQ limited for the trial order.
6. We adopt good credit quality electrical appliances.
7. Best customer care and efficient after-sale services.
8. Don't hesitate to inquire us, we will reply you within 12 hours.

### Production and transport



### FAQ

**Q1: Could I Put My Own Logo On It?**

A1: Sure, of course, we are a professional manufacturer and have over 10 years OEM experience, customer's logo can be made by laser, engraved, embossed, transfer printing etc.

**Q2: What's the delivery time?**

A2: Normally, 3-15 days after order and payment confirmation. Actually, it will depend on your order quantity.

**Q3: What's your terms of payment?**

A3: T/T 30% as deposit, and 70% before delivery. We'll show you the photos of the products and packages before you pay the balance.

**Q4: How do you make our business long-term and good relationship?**

A4: a. We keep good quality and competitive price to ensure our customers benefit; b. We respect every customer as our friend and we sincerely do business and make friends with them, no matter where they come from.

**Q5: If we bought your products, but found quality problem, how to solve?**

A5: After confirmed, if the quality problem is caused by us not for outer sector, we will compensate each piece to customer.

### How to contact us

Send your Inquiry Details in the Below, please Click "**send**" Now!  
Good price and sample are waiting for you.



**Guangzhou Golden Electric Co., Ltd.**



008618998498109



eva@china-golden.com.cn



chinagoldene.com

Building 4, Self-edited Building, No. 728, Kaichuang Avenue, Yunpu Industrial Zone, Huangpu District,  
Guangzhou city,Guangdong province,China