

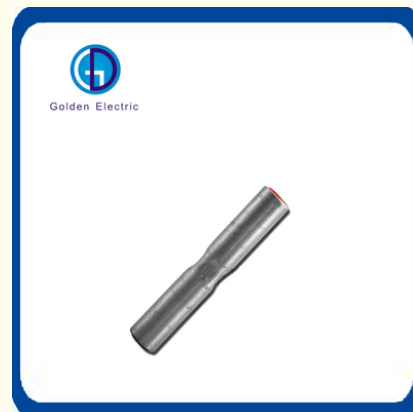


Terminal Species Insulation Character Compression Copper Cable Sleeve Crimp Cable Link

Our Product Introduction

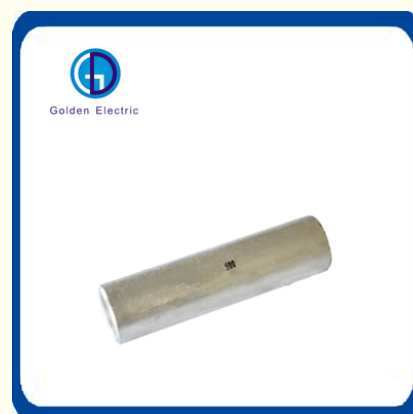
Basic Information

- Place of Origin: China
- Brand Name: Golden Electric /OEM
- Certification: ISO 9001, ISO 9000, ISO 14001, ISO 14000, ISO 20000, OHSAS/ OHSMS 18001, IATF16949
- Minimum Order Quantity: 1
- Packaging Details: Carton/Pallet
- Delivery Time: Peak Season Lead Time: more than 12 months Off Season Lead Time: within 15 workdays
- Payment Terms: LC, T/T, PayPal, Western Union
- Supply Ability: 5000/Month

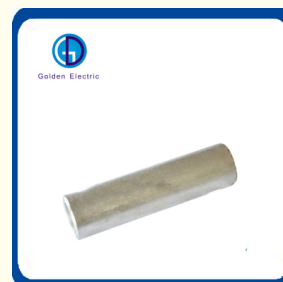


Product Specification

- Model NO.: GTY
- Shape: Tubular
- Interface Type: AC/DC
- Brand: Golden Electric/OEM
- Rated Voltage: 415V
- Entry: Chamfered Entry
- Busbar: -55c~150c
- Size: 16-800mm2
- Coating: Tin
- OEM: Accept
- Sample: Accept
- Color: Natural
- Product Key Words: Insulated Terminal Blocks
- Shell Material: PVC
- Transport Package: Standard Export Carton



More Images



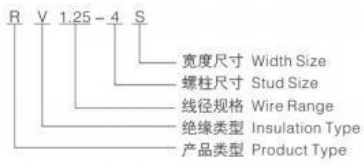
for more products please visit us on chinagoldene.com

Product Description

Product Description



型号含义 Type Meaning



Compression Copper Cable Sleeve Crimp Cable Link

Technical Requirements

The product should be accordance with the technical specifications of GB9327, IEC61238-1

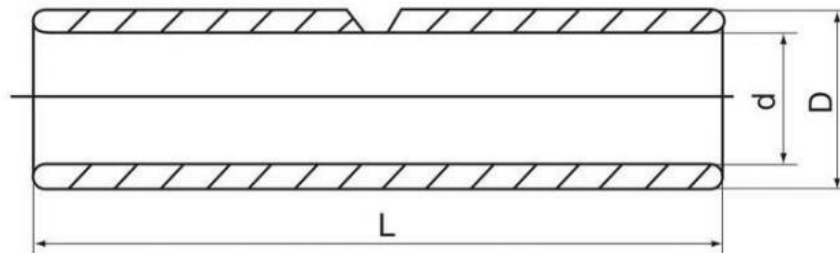
Material: Copper

Surface treatment: Tin-plated

Product property: It is used to connect copper conductor joint.



Product Parameters



Type No.	Main Dimensions(mm)		
	D	d	L
GTY-1.5	3.7	1.8	20
GTY-2.5	4	2.5	20
GTY-4	4.8	3.1	20
GTY-5.5	5.5	3.8	25
GTY-10	6.8	4.8	30
GTY-16	7.5	5.5	35
GTY-25	9	7	40
GTY-35	10.5	8.2	45
GTY-50	12.5	9.8	50
GTY-70	14.5	11.5	55
GTY-95	17.5	13.5	60
GTY-120	19.5	15	65
GTY-150	21	16.5	70
GTY-185	23.5	18.5	75

GTY-240	26.5	21	80
GTY-300	30	24	85
GTY-400	34	27	90
GTY-500	38	30	100
GTY-630	45	35	110
GTY-800	50	39	150
GTY-1000	56	44	170

Packaging & Shipping

Terminal Value Of Packaging



Value Pack: N-175(plastic box)
175 PCS 18 TYPE Assortment

编号 ITEM.NO.	数量 QTY	编号 ITEM.NO.	数量 QTY	编号 ITEM.NO.	数量 QTY
RV1.25-3	15	RV5.5-5	5	BV2	10
RV51.25-4	10	RV5.5-6	5	BV5.5	5
RV1.25-5	10	SV1.25-3	10	MDD1.25-250	10
RV2-3	15	SV51.25-4	10	MDD2-250	10
RV52-4	10	SVL2-4	10	FDD1.25-250	10
RVL2-5	10	BV1.25	10	FDD2-250	10



Value Pack: N-175(plastic box)
175 PCS 18 TYPE Assortment

编号 ITEM.NO.	数量 QTY	编号 ITEM.NO.	数量 QTY	编号 ITEM.NO.	数量 QTY
RV1.25-3	25	RV5.5-5	5	BV2	10
RV51.25-4	25	RV5.5-6	5	BV5.5	5
RV1.25-5	25	SV1.25-3	20	MDD1.25-250	20
RV2-3	15	SV51.25-4	20	MDD2-250	20
RV52-4	20	SVL2-4	20	FDD1.25-250	20
RVL2-5	10	BV1.25	10	FDD2-250	20

Packaging Details:

Customized Packing: Header card packing, Blister with card packing, Double blister packing, Canister packing, other packing can be supplied according customers request.

Shipping:

1. By Air or by Sea for batch goods,Airport/ Port receiving;
2. Customers specifying freight forwarders or negotiable shipping methods!

Delivery Detail:

Shipped in 7 days after payment

Company Profile

- Golden Electric Co.,Ltd ,was foundad in 2017, we are professional for make **AC and DC electric items** such as cable gland,cable tie ,isolator switch , fuse , breaker , distribution box , PV combiner box ,surge protector, Industrial plug and socket,Solar product and so on.

- Golden has been granted ISO9001 management system certifications. The comprehensive product line has more than 1000 models which have been approved by TUV,CE,CQC,SGS,ROHS,SASO. The productsells well to UK, Spain, Portugal, Singapore, Turkey, Russia, Korea, South Africa... more than 60 countries and regions.

- Golden is always striving hard to provide the best services and competitive price to all customers.
Recommend Products



Closed end Terminal



Nylon Connectors



Tube Type Terminal



Plug-in Terminal



Copper Bare Terminal



Insulated Copper Terminals

Our Advantages

1. Best ensure 100% customer satisfaction.
2. Our products have one year guarantee.
3. Sample in design and easy to operate and maintain.
4. All electrical parts of products are made up for qualified materials.
5. No MOQ limited for the trial order.
6. We adopt good credit quality electrical appliances.
7. Best customer care and efficient after-sale services.
8. Don't hesitate to inquire us, we will reply you within 12 hours.

Production and transport



FAQ

Q1: Could I Put My Own Logo On It?

A1: Sure, of course, we are a professional manufacturer and have over 10 years OEM experience, customer's logo can be made by laser, engraved, embossed, transfer printing etc.

Q2: What's the delivery time?

A2: Normally, 3-15 days after order and payment confirmation. Actually, it will depend on your order quantity.

Q3: What's your terms of payment?

A3: T/T 30% as deposit, and 70% before delivery. We'll show you the photos of the products and packages before you pay the balance.

Q4: How do you make our business long-term and good relationship?

A4: a. We keep good quality and competitive price to ensure our customers benefit; b. We respect every customer as our friend and we sincerely do business and make friends with them, no matter where they come from.

Q5: If we bought your products, but found quality problem, how to solve?

A5: After confirmed, if the quality problem is caused by us not for outer sector, we will compensate each piece to customer.

How to contact us

Send your Inquiry Details in the Below, please Click "[send](#)" Now!
Good price and sample are waiting for you.



Guangzhou Golden Electric Co., Ltd.



008618998498109



eva@china-golden.com.cn



chinagoldene.com

Building 4, Self-edited Building, No. 728, Kaichuang Avenue, Yunpu Industrial Zone, Huangpu District,
Guangzhou city,Guangdong province,China