



## CE Certified 3mm-20mm Thickness Copper Earth Busbars for Electrical Grounding Protection

Our Product Introduction

### Basic Information

- Place of Origin: China
- Brand Name: Golden Electric /OEM
- Certification: ISO 9001, ISO 9000, ISO 14001, ISO 14000, ISO 20000, OHSAS/ OHSMS 18001, IATF16949
- Minimum Order Quantity: 1
- Packaging Details: Carton/Pallet
- Delivery Time: Peak Season Lead Time: more than 12 months  
Off Season Lead Time: within 15 workdays
- Payment Terms: LC, T/T, PayPal, Western Union
- Supply Ability: 5000/Month

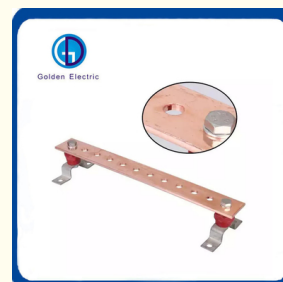
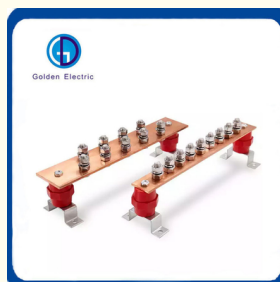


### Product Specification

- Model: Copper Grounding Earth Busbar
- Usage: Indoor, Outdoor, Distribution Cabinet
- Thickness: 3mm-20mm
- Transport Package: Standard Export Package
- Trademark: Golden Or Natural, Or Customer Brand
- Origin: China
- HS Code: 8607910000
- Supply Ability: 20000PCS/Month
- Surface Treatment: Tinned Or Nickered
- Certification: RoHS, CE
- Material: Pure Copper Or Tinned Copper Or Copper Clad Steel
- Application: Grounding System
- Number Of Contacts: 1 - 10
- Name: Copper Busbar



### More Images



for more products please visit us on [chinagoldene.com](http://chinagoldene.com)

Product Description



Busbar is a efficient earthing terminal bus block ,it can be used to test the current towards,it is popular used in earthing system. We can produce the Busbar according to customers' requirement.

Application:

Busbar is used for earthing system of power plant ,transformer station ,tower ,communication station ,airport, railway, subway station , high building ,computer room ,petro plant ,oil reservoir in the environmental of moist ,saline and alkaline ,acid and chemical corrosion medium environmental.

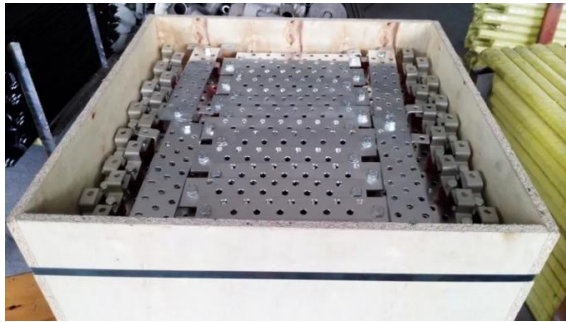
Product Parameters

Material	Pure copper
Length	100mm-3000mm
Width	25mm-200mm
Thickness	3mm-20mm
Surface	Tinned or Nickered surface is available
Service life	More than 50 years
Characters	Strong anticorrosion,high conductivity

Product specifications	Product Size
Grounding copper bus bar arrangement	1.Copper bus bar or Tinned copper bus bar or Nickered copper bus bar
	2. Copper bus bar or Tinned copper bus bar or Nickered copper bus bar,support
	3. Copper bus bar or Tinned copper bus bar or Nickered copper bus bar,insulator

	4. Copper bus bar or Tinned copper bus bar or Nickerled copper bus bar,support,insulator
Thicknss	3mm 4mm 5mm 6mm 8mm 10mm 12mm 20mm
Wide	25mm 30mm 40mm 50mm 60mm 80mm 100mm 120mm 200mm
Length	100mm-3000mm
Cable Size	φ8mm-φ25mm

#### Packing



## Recommand Product



## Company Profile

- Golden Electric Co.,Ltd ,was foundad in 2007, we are professional for make **AC and DC electric items** such as cable gland,Solar PV Cable, MC4 Connector, isolator switch , fuse , breaker , distribution box , PV combiner box ,surge protector, Indicator lamp,Solar Charge Controller,Industrial plug and socket,Wind Turbine, Solar product ,Copper Earthing Rods, Copper Busbar and so on.

- Golden has been granted ISO9001 management system certifications. The comprehensive product line has more than 1000 models which have been approved by TUV,CE,CQC,SGS,ROHS,SASO. The productsells well to UK, Spain, Portugal, Singapore, Turkey, Russia, Korea, South Africa... more than 60 countries and regions.

- Golden is always striving hard to provide the best services and competitive price to all customers.

## FAQ

### 1) Q:How can i trust your company?

A:Golden electric is The top 10 manufacture in China - more than 350 Agents in local market and more than 100 foreign clients make OEM,ODM order from us,Golden electric is a big company, we have cooperation with LS, EKF the world-class companies. Our company over 100 employees, products pass CE,IEC,TUV,SAA, RCM, ROHS certificates.



**2) Q:Your products?**

A: Golden electric is factory for Automatic transfer switch, Surge protector device, distribution box Enclosure, inverter, DC fuse Copper Earthing Rod etc. Providing customers very competitive sources, and can be your sourcing agent in China. Goods are following international standards, IE, CE, ISO9001, SGS etc.

**3) Q: Do you have forwarder?**

A: Yes, we have good forwarder cooperated over 10 years, they help us import and export. For small package orders, suggest to use by Express.

**4) Q: Your address ?**

A: Locates in Guangzhou province, China, welcome to visit us

**5) Q:What's the Copper Earthing Busbar guarantee?**

A: 2 years warranty. If customer's problem, then customer burden. If our problem, then we send new goods to customer to replace asap.

**6) Q:What's about MOQ? Delivery time ?**

A: 1pcs for Copper Earthing Busbar.

**7) Q: What's the payment term?**

A: Normally 100% T/T in advanced payment. If big order then about 50% advanced payment, balance before shipment. PAYPAL, WESTERN UNION, CASH for small order.

**8) Q:What's your contact information ?**

**Send us your *inquiry* !we will reply you in 24 hours !**

**If you need information about this product. Please *Click here* to contact me and we will provide you with more information about the products.**



**Guangzhou Golden Electric Co., Ltd.**



008618998498109



eva@china-golden.com.cn



chinagoldene.com

Building 4, Self-edited Building, No. 728, Kaichuang Avenue, Yunpu Industrial Zone, Huangpu District,  
Guangzhou city, Guangdong province, China