

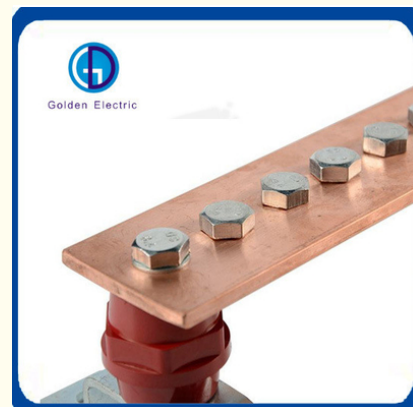


Electric Fence Grounding System Earthing Copper Bar with Certificate ISO9001 2015

Our Product Introduction

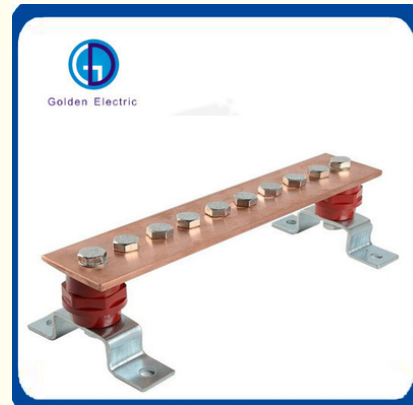
Basic Information

- Place of Origin: China
- Brand Name: Golden Electric /OEM
- Certification: ISO 9001, ISO 9000, ISO 14001, ISO 14000, ISO 20000, OHSAS/ OHSMS 18001, IATF16949
- Model Number: Blj-CB
- Minimum Order Quantity: 1
- Packaging Details: Carton/Pallet
- Delivery Time: Peak Season Lead Time: more than 12 months Off Season Lead Time: within 15 workdays
- Payment Terms: LC, T/T, PayPal, Western Union
- Supply Ability: 5000/Month

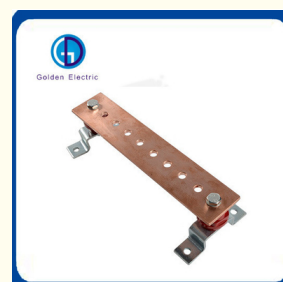
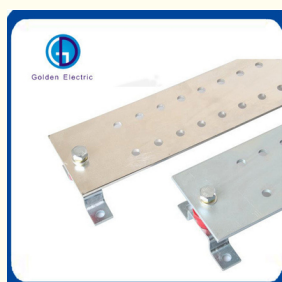


Product Specification

- Standard: Mm
- Number Of Contacts: 1 - 10
- Conductor Size: 5 - 10 AWG
- Size: Custom Made
- Cable Size: 8mm-25mm
- Categories: Grounding Bus Bar
- OEM&ODM: Yes
- Certificate: ISO9001:2015
- Manufacturer: Yes
- Tensile Life: >=50years
- Product Name: Power System Pure Copper Ground Busbar
- Transport Package: Ocean Freight Wooden Carton+ Pallets+ Containers
- Specification: Different Sizes And Specifications
- Trademark: Golden Electric Or Customize



More Images



for more products please visit us on chinagoldene.com

Product Description

Product Description

Electric Fence Grounding System Earthing Copper Bar

Material	pure copper or tinned copper or copper clad steel
Length	100mm-3000mm
Wide	25mm-200mm
Thickness	3mm-20mm
Surface	Tinned or Nickeled surface is available
Service life	More than 50 years
Available service mode	OEM,ODM
Certificate	ISO9001:2015

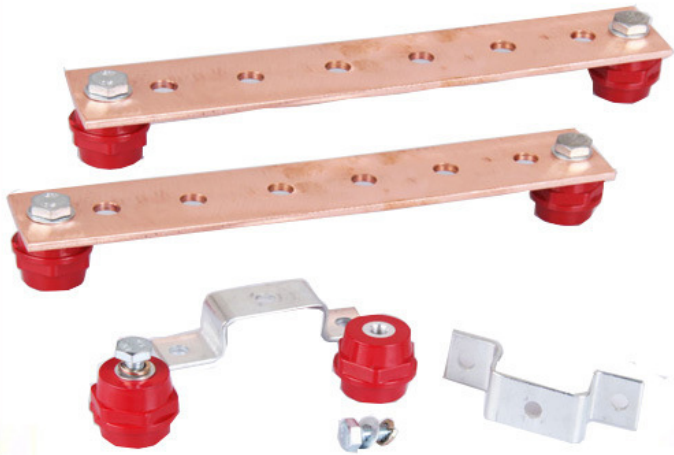
Product common specifications and Size(Accept Customization)
Negotiable Price According to different material/size and and Purchase quantity

Grounding copper bus bar arrangement	1.Copper bus bar or Tinned copper bus bar or Nickeled copper bus bar
	2. Copper bus bar or Tinned copper bus bar or Nickeled copper bus bar,support
	3. Copper bus bar or Tinned copper bus bar or Nickeled copper bus bar,insulator
	4. Copper bus bar or Tinned copper bus bar or Nickeled copper bus bar,support,insulator
Thickness	3mm 4mm 5mm 6mm 8mm 10mm 12mm 20mm
Wide	25mm 30mm 40mm 50mm 60mm 80mm 100mm 120mm 200mm
Length	100mm-3000mm
Cable Size	φ8mm-φ25mm

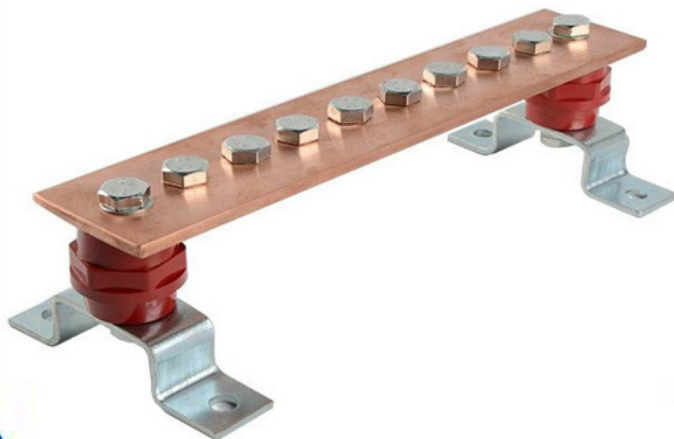




Golden Electric

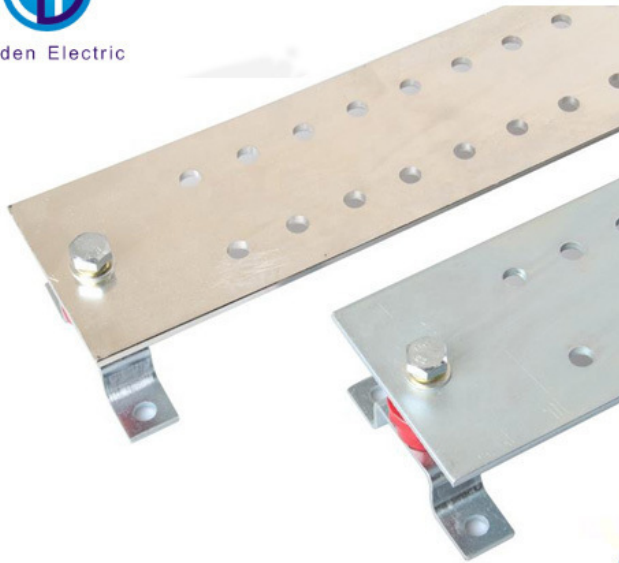


Golden Electric





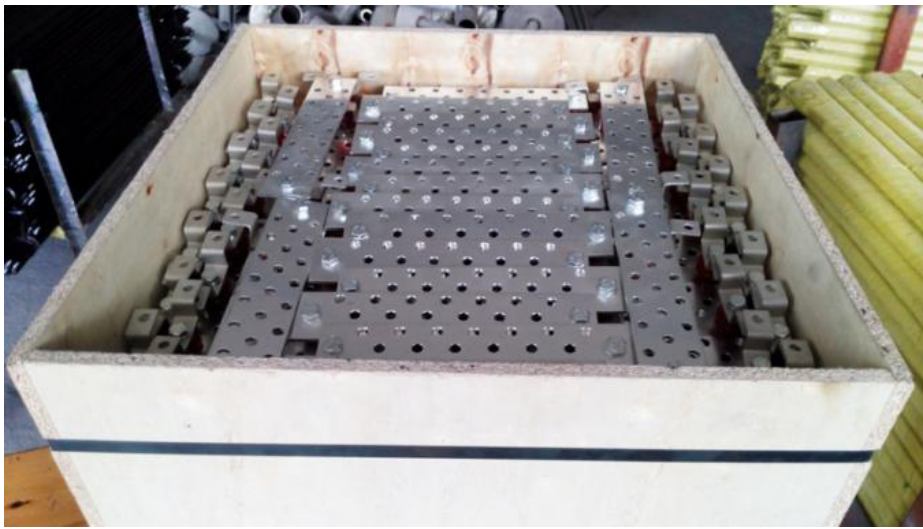
Golden Electric



Golden Electric







Busbar is a efficient earthing terminal bus block ,it can be used to test the current towards,it is popular used for earthing system of power plant ,transformer station ,tower ,communication station ,airport, railway, subway station , high building ,computer room ,petro plant ,oil reservoir in the environmental of moist ,saline and alkaline ,acid and chemical corrosion medium environmental.

Packing & Delivery

Packaging Details Port	Copper Bar packing: wooden carton+ pallets+ containers Guangzhou
---------------------------	---

Products Category



Fuse Link



Solar Power System



Copper Terminal Block



Screw Fixed Barrier Terminal

Block

FAQ

1.Are you a trading company or manufacturer?

Manufacturer with factory!

2.What kinds of Grounding Material do you produce?

It covers grounding rod ,lightning rod ,connecting fixing ,conductor, exothermic welding kit, etc.

3.Is Customized Material available?

Yes, please offer your required specs.

4.Do you Accept OEM service?

YES!

5.What's your Delivery Time?

Normally 20-25days,please confirm with us before order!

6.What's the Payment Trems?

Usually,50% as deposit,50% before sending B/L by T/T.

7.How you pack products?

Normally, in steel pallet. We'll do according to customers' requirement.



Guangzhou Golden Electric Co., Ltd.



008618998498109



eva@china-golden.com.cn



chinagoldene.com

Building 4, Self-edited Building, No. 728, Kaichuang Avenue, Yunpu Industrial Zone, Huangpu District,
Guangzhou city,Guangdong province,China