

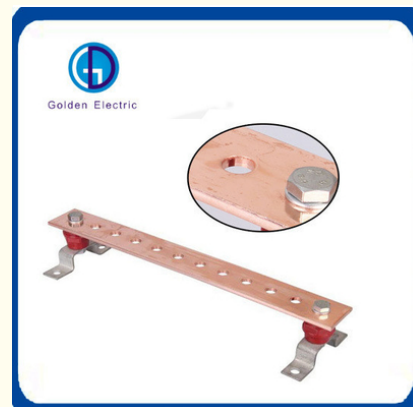


## Copper Busbar Custom Logo Size Pure Copper/Tinned Copper/ Copper Clad Steel Busbar

Our Product Introduction

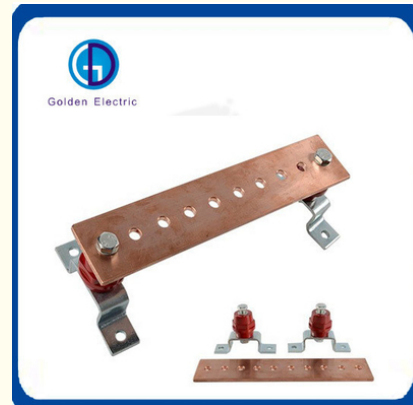
### Basic Information

- Place of Origin: China
- Brand Name: Golden Electric /OEM
- Certification: ISO 9001, ISO 9000, ISO 14001, ISO 14000, ISO 20000, OHSAS/ OHSMS 18001, IATF16949
- Model Number: Blj-CB
- Minimum Order Quantity: 1
- Packaging Details: Carton/Pallet
- Delivery Time: Peak Season Lead Time: more than 12 months Off Season Lead Time: within 15 workdays
- Payment Terms: LC, T/T, PayPal, Western Union
- Supply Ability: 5000/Month

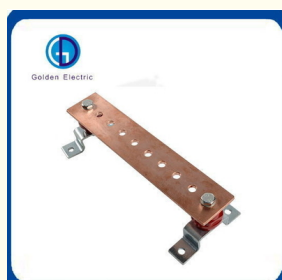


### Product Specification

- Voltage: Depending On Different Specifications
- Current: Depending On Different Specifications
- Packing: Custom Made
- OEM: Yes
- ODM: Yes
- Manufacturer: Yes
- Copper Busbar: Copper Busbar
- Insulated Copper Busbar: Insulated Copper Busbar
- Transport Package: Ocean Freight Inner Packing+Carton+Pallets
- Specification: Different Sizes And Specifications
- Trademark: Golden Electric Or Customize
- Origin: China
- HS Code: 8537209000
- Supply Ability: 5000/Month
- Type: Copper Wire, Busbar



### More Images



for more products please visit us on [chinagoldene.com](http://chinagoldene.com)

## Product Description

### Company

#### Profile

GoldenElectricCo., Ltd.

is professional make of Electrical products .Such as distribution box, waterproof plug, socket, wall switch, waterproof plastic ,Aluminum box ,Changeover Switch and disconnecting switch,MC4 Connector.isolator switch.fusebreaker.distribution box,PV combiner box .surge protector, Indicatorlamp,Solar Charge Controller,Industrialplugandsocket,BusbarInsulator,Meter Socket,Wind Turbine, Terminal Block,Solar product and so on. all products comply with IEC, A S/NZS standard. passed CE, IP66, ROHS certificates.at present we have exported to many countries and have serve these customers with professional electrical solution.

### Product Description

Factory Custom Logo Size High Performance Pure Copper/Tinned Copper/ Copper Clad Steel Busbar

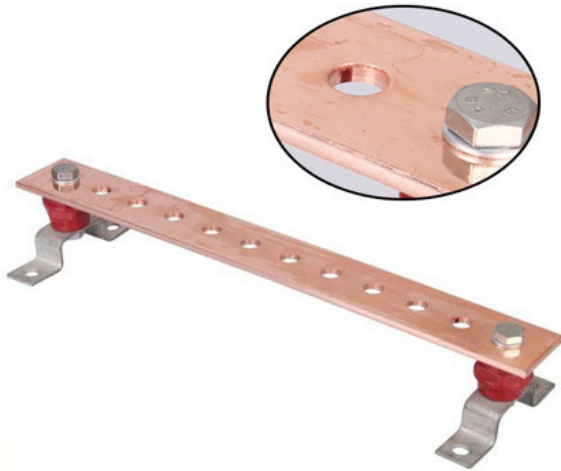
Material	pure copper or tinned copper or copper clad steel
Length	100mm-3000mm
Wide	25mm-200mm
Thickness	3mm-20mm
Suface	Tinned or Nickerled surface is available
Service life	More than 50 years
Available service mode	OEM,ODM
Certificate	ISO9001:2015

### Product common specifications and Size(Accept Customization)

Grounding copper bus bar arrangement	1.Copper bus bar or Tinned copper bus bar or Nickerled copper bus bar
	2. Copper bus bar or Tinned copper bus bar or Nickerled copper bus bar,support
	3. Copper bus bar or Tinned copper bus bar or Nickerled copper bus bar,insulator
	4. Copper bus bar or Tinned copper bus bar or Nickerled copper bus bar,support,insulator
Thickness	3mm 4mm 5mm 6mm 8mm 10mm 12mm 20mm
Wide	25mm 30mm 40mm 50mm 60mm 80mm 100mm 120mm 200mm
Length	100mm-3000mm
Cable Size	φ8mm-φ25mm



Golden Electric

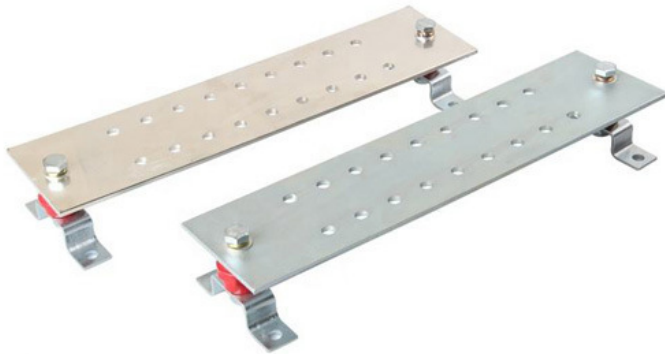


Golden Electric

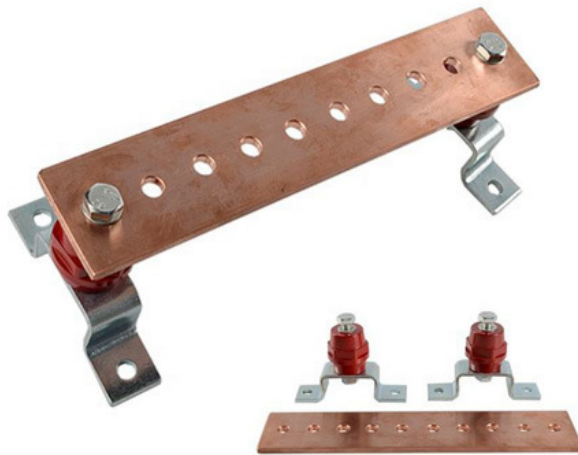




Golden Electric



Golden Electric

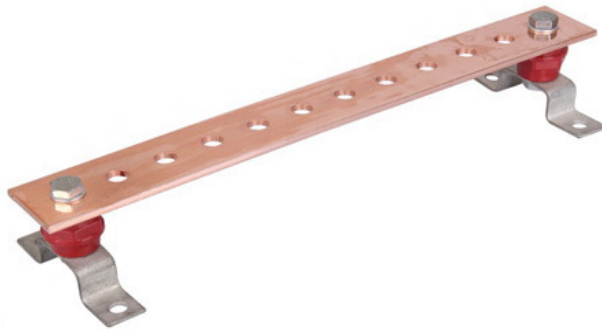


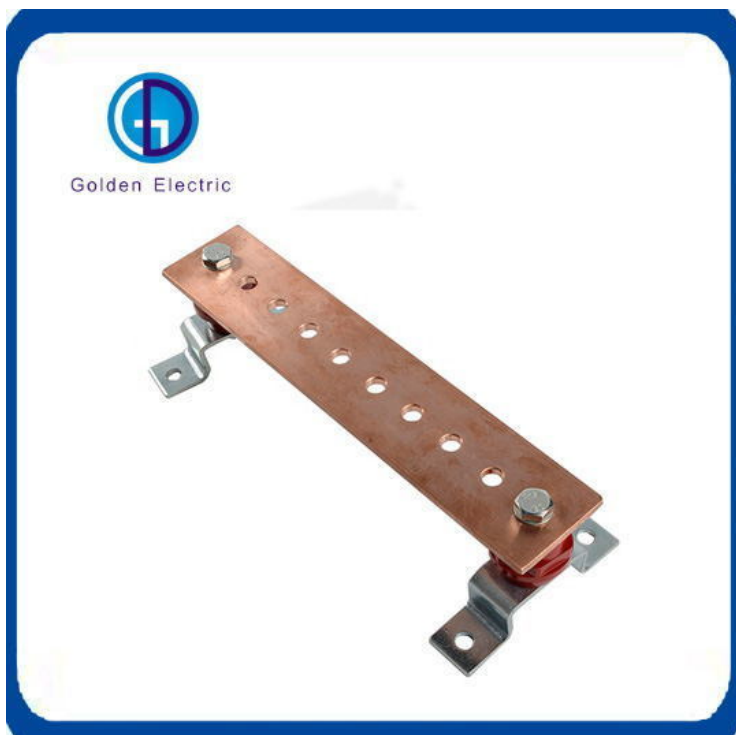


Golden Electric



Golden Electric





Busbar is a efficient earthing terminal bus block ,it can be used to test the current towards,it is popular used for earthing system of power plant ,transformer station ,tower ,communication station ,airport, railway, subway station , high building ,computer room ,petro plant ,oil reservoir in the environmental of moist ,saline and alkaline ,acid and chemical corrosion medium environmental.

Products Category

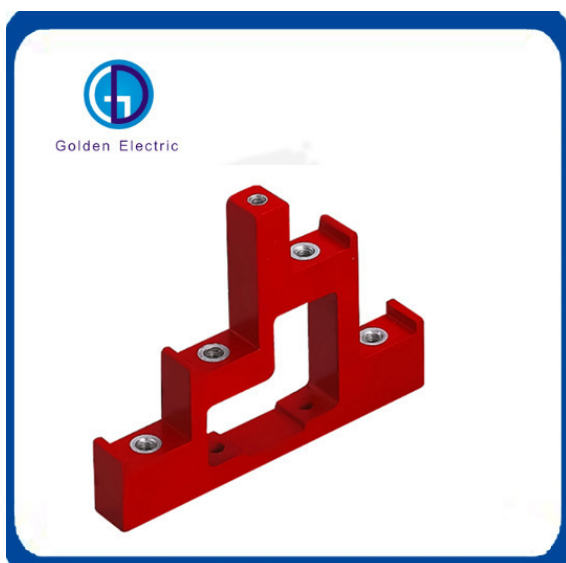


Waterproof Industrial Plug and Socket



Solar Waterproof Junction

Box



Copper Row Insulator



PV Solar Panel Junction Box

#### Packing & Delivery

Packaging Details: inner packing+carton+pallets

Lead time:

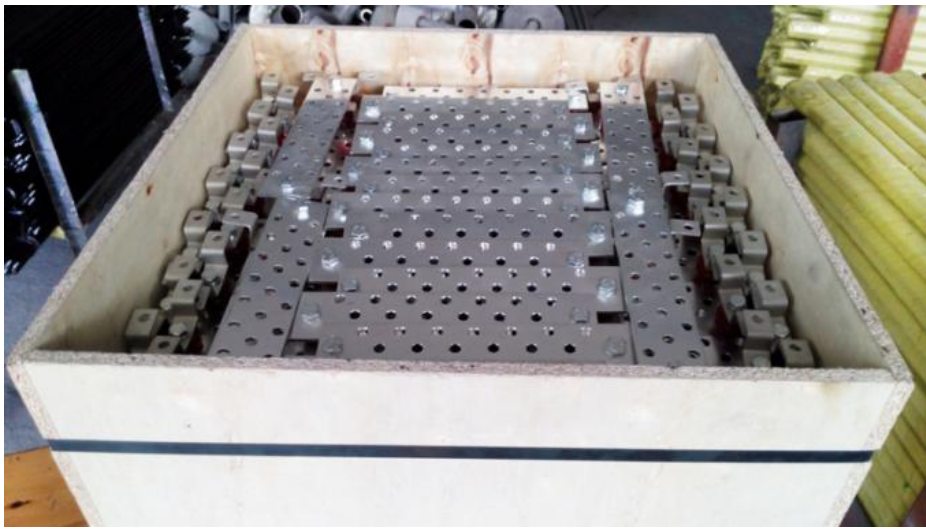
Quantity(pieces) 1 - 1000 1001 - 10000 >10000

Lead time (days) 30 50 To be negotiated









#### FAQ

Q1: Are you a factory or trading company

A1: We are a factory, we can guarantee our price is first-hand, very cheap and competitive.

Q2: How does your factory do regarding quality control?

A2: All the products will be 100% checked before the shipment

Q3: When can I get the price?

A3: Usually we quote within 24 hours after we get your inquiry.

Q4: How could I get a sample?

A4: if you can not buy our product in your local area, we will ship a sample to you. You will be charged a sample price plus all related shipping costs. Express delivery charge depends on the quantity of the samples.

Q5: What is the price of shipping?

A5: Depending upon the port of delivery, prices vary.

**Any more query please contact with us, thank you!**



**Guangzhou Golden Electric Co., Ltd.**



008618998498109



eva@china-golden.com.cn



chinagoldene.com

Building 4, Self-edited Building, No. 728, Kaichuang Avenue, Yunpu Industrial Zone, Huangpu District,  
Guangzhou city,Guangdong province,China