



Customized 0.5-400mm² Cable Size Copper Aluminium Terminal Lug with OEM Service

Our Product Introduction

Basic Information

- Place of Origin: China
- Brand Name: Golden Electric /OEM
- Certification: ISO 9001, ISO 9000, ISO 14001, ISO 14000, ISO 20000, OHSAS/ OHSMS 18001, IATF16949
- Model Number: Clamp-Lug
- Minimum Order Quantity: 1
- Packaging Details: Carton/Pallet
- Delivery Time: Peak Season Lead Time: more than 12 months Off Season Lead Time: within 15 workdays
- Payment Terms: LC, T/T, PayPal, Western Union
- Supply Ability: 5000/Month



Product Specification

- Certificate: ISO9001
- Cable Size: 0.5~400mm²
- OEM: Yes
- Specification: Different Sizes And Specifications
- Trademark: Golden Electric Or Customize
- Origin: China
- HS Code: 7415210000
- Supply Ability: 5000/Month
- Type: Socket Terminals
- Material: Copper
- Application: Wire Connecting
- Production Process: Welding
- Shape: U
- Certification: ISO
- Customization: Available | Customized Request



More Images



for more products please visit us on chinagoldene.com

Product Description

Company

Profile

GoldenElectricCo., Ltd.

is professional make of Electrical products .Such as distribution box, waterproof plug, socket, wall switch, waterproof plastic ,Aluminum box ,Changeover Switch and disconnecting switch,MC4 Connector.isolator switch.fusebreaker.distribution box,PV combiner box .surge protector, Indicatorlamp,Solar Charge Controller,Industrialplugandsocket,BusbarInsulator,Meter Socket,Wind Turbine, Terminal Block,Solar product and so on. all products comply with IEC, A S/NZS standard. passed CE, IP66, ROHS certificates.at present we have exported to many countries and have serve these customers with professional electrical solution.

Product Description

2021 China Factory Custom/Wholesale Low Price Terminal Lug Copper Aluminium Cable lugs

Material	Copper/aluminum/Brass
Size	according to customer's requirement
Life	≥50years
Function	connecting conductors
Characters	easy installation ,good conductivity,cost low

Cable LUG is made with brass or copper material,are used as connection for circular line fixed on the wall.Earth clamp is used for lightning protection of building,conductor of the fastening and connection of the net work,Use the matched fittings will make the lightning system easy to install and extend the using life.We produce tape clamp according to the national standard and industrial standard.





Golden Electric



Golden Electric

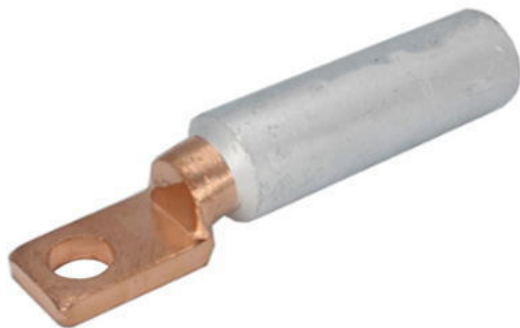




Golden Electric



Golden Electric





Golden Electric



Golden Electric





Golden Electric



Golden Electric






Golden Electric

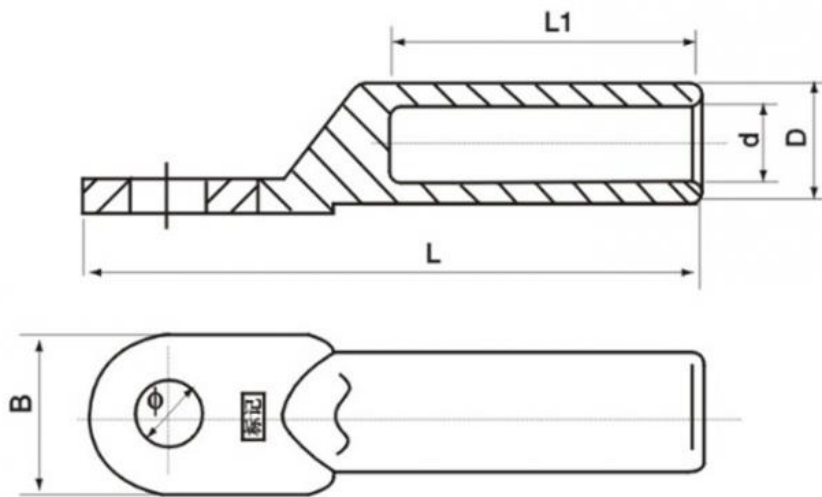


Golden Electric





Type A(mm)	picture	P± 0.3		D ± 0.3	d ± 0.3	L ± 3	L1 ± 0.3	W ± 0.5	S ± 0.3
DTL-2-16-11		Φ11	Φ16	Φ6	80	40	Φ20	3	
DTL-2-25-11		Φ11	Φ16	Φ7	80	40	Φ20	3	
DTL-2-35-11		Φ11	Φ16	Φ8.5	80	40	Φ20	3	
DTL-2-50-13		Φ13	Φ20	Φ10	90	43	Φ25	4.5	
DTL-2-70-13		Φ13	Φ20	Φ11.5	90	43	Φ25	4.5	
DTL-2-95-13		Φ13	Φ20	Φ13.5	90	43	Φ25	4.5	
DTL-2-120-13		Φ13	Φ25	Φ15	115	59	Φ30	5.5	
DTL-2-150-13		Φ13	Φ25	Φ16.5	115	59	Φ30	5.5	
DTL-2-185-13		Φ13	Φ32	Φ18.5	122	60	Φ35	6	
DTL-2-240-13		Φ13	Φ32	Φ21	122	60	Φ35	6	
DTL-2-300-13		Φ13	Φ34	Φ23.5	128	65	Φ35	6	



Product

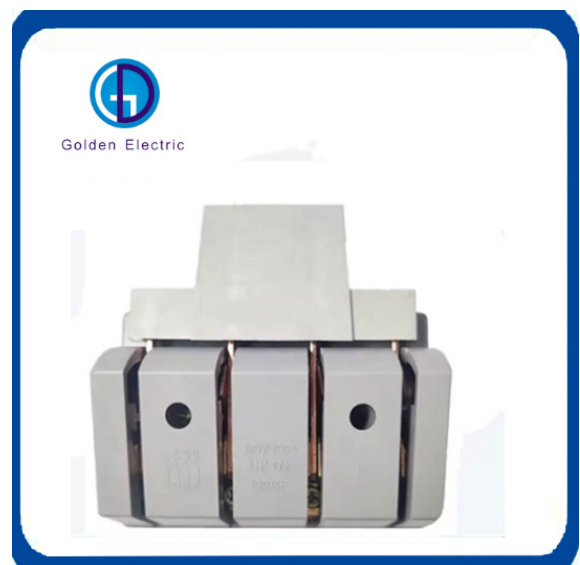
Application

Earth clamp is used for lightning protection of building,conductor of the fastening and connection of the net work,Use the matched fittings will make the lightning system easy to install and extend the using life.

Products Category



Waterproof Stage Power Distribution Box
Isolating Switch



Single Throw Changeover Knife



Plug-In Type Metal Enclosure Distribution Box



Electrical Panel Distribution Box

Packing & Delivery

All of our products are with strong packing and free of charge, we also can provide packing according to customer's requirement.

Packaging Details: woven belt+Iron pallet+container

Lead time:

Quantity(pieces) 1 - 1000 > 1000

Lead time (days) 15 To be negotiated

FAQ

Q1: Are you a factory or trading company

A1: We are a factory, we can guarantee our price is first-hand, very cheap and competitive.

Q2: How does your factory do regarding quality control?

A2: All the products will be 100% checked before the shipment

Q3: When can I get the price?

A3: Usually we quote within 24 hours after we get your inquiry.

Q4: How could I get a sample?

A4: if you can not buy our product in your local area, we will ship a sample to you. You will be charged a sample price plus all related shipping costs. Express delivery charge depends on the quantity of the samples.

Q5: What is the price of shipping?

A5: Depending upon the port of delivery, prices vary.

Any more query please contact with us, thank you!



Guangzhou Golden Electric Co., Ltd.



008618998498109



eva@china-golden.com.cn



chinagoldene.com

Building 4, Self-edited Building, No. 728, Kaichuang Avenue, Yunpu Industrial Zone, Huangpu District,
Guangzhou city, Guangdong province, China