



Quick Splice Wire Connector 878101 T-Tap Series for Red/Yellow/Blue Wire Zinc-Plated

Our Product Introduction

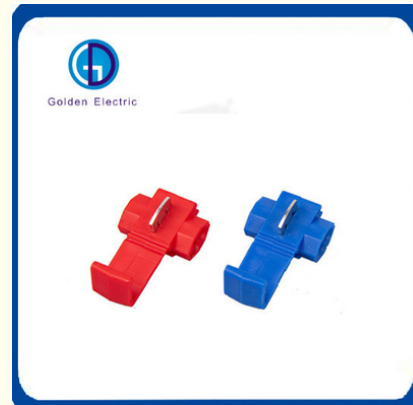
Basic Information

- Place of Origin: China
- Brand Name: Golden Electric /OEM
- Certification: ISO 9001, ISO 9000, ISO 14001, ISO 14000, ISO 20000, OHSAS/ OHSMS 18001, IATF16949
- Model Number: 878101
- Minimum Order Quantity: 1
- Packaging Details: Carton/Pallet
- Delivery Time: Peak Season Lead Time: more than 12 months Off Season Lead Time: within 15 workdays
- Payment Terms: LC, T/T, PayPal, Western Union
- Supply Ability: 5000/Month



Product Specification

- Insulation Material: PP
- Color: Red/Bule/Yellow
- Surface Treatment: Zinc-Plated
- Wire Range: 0.75-2.5mm
- Certificate: CE
- Packing: 500PCS Per Bag Or As Per Customer Request
- Supply Ability: 5000/Month
- OEM: Yes
- Transport Package: Ocean Freight Air Freight
- Specification: Different Sizes And Specifications
- Trademark: Golden Electric Or Customize
- Origin: China
- HS Code: 7616999000
- Type: Terminal



More Images



for more products please visit us on chinagoldene.com

Product Description

Company

Profile

GoldenElectricCo., Ltd.

is professional make of Electrical products .Such as distribution box, waterproof plug, socket, wall switch, waterproof plastic ,Aluminum box ,Changeover Switch and disconnecting switch,MC4 Connector.isolator switch.fusebreaker.distribution box,PV combiner box .surge protector, Indicatorlamp,Solar Charge Controller,Industrialplugandsocket,BusbarInsulator,Meter Socket,Wind Turbine, Terminal Block,Solar product and so on. all products comply with IEC, A S/NZS standard. passed CE, IP66, ROHS certificates.at present we have exported to many countries and have serve these customers with professional electrical solution.

Product Description

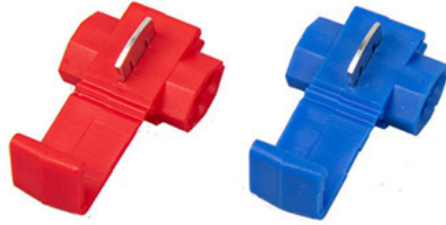
Its purpose is to better connect and apply wires.

At both ends of the terminal connector, there are holes for different numbers of wires to be inserted. Not only the number of wires, but also the spacing of wires, which make connection more convenient and fast. It is these small details that can effectively reduce the volume of electronic products, and also reduce production costs. It can be effectively used as a data line for transmission between mobile mainboards or PCBs.

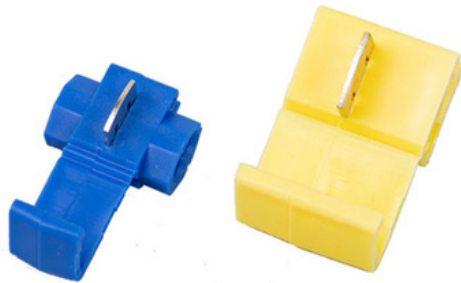




Golden Electric

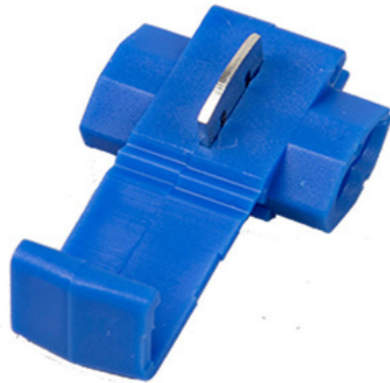


Golden Electric

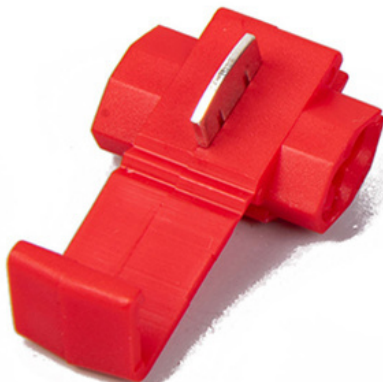




Golden Electric



Golden Electric





Golden Electric



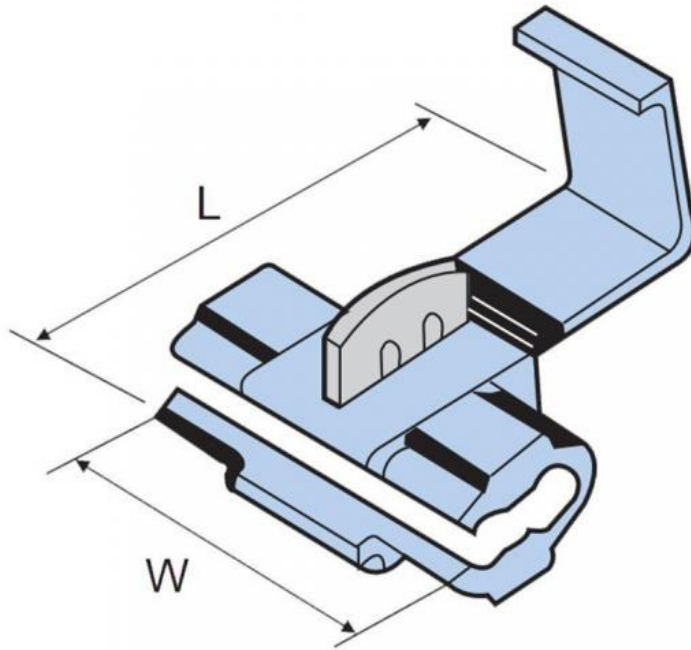
Product

size

Quick Splice Connectors(M)

Insulated:PP Thickness:0.4mm Material:Brass

INEM NO	Dimension(mm)		Cable Size		color
	L	W	A.W.G	mm ²	
878100	27	20	22-18	0.5-1.0	Red
878101	27	20	18-14	0.75-2.5	Blue
878201	34.5	20.5	12-10	4-6	Yellow



Product usage

method

1. We can peel off part of the insulation skin of the wire without too much, just 6~8 mm.
2. After peeling off the skin, the copper wire is exposed inside, and the copper wire is inserted into the junction box.
3. There are screws on the junction box. We use a screwdriver to tighten the screws.
4. After tightening, we can pull the wire firmly. If the wire is not pulled, then the connection is successful.
5. Press the switch to check whether the light is on. If the light is on, we will install it. If we can't operate by ourselves, we can also invite professional construction workers to operate at home, so as to ensure the professionalism and safety of operation and avoid unnecessary safety hazards in future use

Products Category



LED Bulbs small Solar Energy Power System



AC Time Relay Timer Delay



Double Core Power PV Solar Cable



Automatic Recovery Over and Under Voltage Protective Device

Packing & Delivery

Packaging Details: 1000pcs/bag.100bags/carton or as per customer request.

Lead time:

Quantity(bags) 1 - 1000 > 1000

Lead time (days) 3 To be negotiated

FAQ

Q1: Are you a factory or trading company

A1: We are a factory, we can guarantee our price is first-hand, very cheap and competitive.

Q2: How does your factory do regarding quality control?

A2: All the products will be 100% checked before the shipment

Q3: When can I get the price?

A3: Usually we quote within 24 hours after we get your inquiry.

Q4: How could I get a sample?

A4: if you can not buy our product in your local area, we will ship a sample to you. You will be charged a sample price plus all related shipping costs. Express delivery charge depends on the quantity of the samples.

Q5: What is the price of shipping?

A5: Depending upon the port of delivery, prices vary.

Any more query please contact with us, thank you!



Guangzhou Golden Electric Co., Ltd.



008618998498109



eva@china-golden.com.cn



chinagoldene.com

Building 4, Self-edited Building, No. 728, Kaichuang Avenue, Yunpu Industrial Zone, Huangpu District, Guangzhou city, Guangdong province, China